

# TO THE PUBLIC: URGENT APPEAL FROM YATALA PRISONERS

Relatives and friends have been asked by the inmates of Yatala Prison to make known to you the following:

Since the "water-tower protest" in February, clamp-downs in Yatala Prison have dramatically increased. Things have gone back 10 years.

On top of the usual physical and emotional maltreatment, all prisoners are now suffering harsh reprisal measures by the Prisons Dept., for events in which the vast majority of prisoners took no part!

Misery grows daily. The latest Prisons Dept. step is secret construction of a massive barrier in the visiting room, to make visits into a living hell. (See secret plans overleaf.)

Prisons Dept. Director, Mr. Gard's excuse is that weapons (guns, bullets, bombs, firebombs) were found hidden during the watertower protest. He blames the visiting public, as smugglers. This is lies and rot.

Who are the real culprits?  
We demand clear answers

## WE DEMAND ANSWERS

WHERE HAVE THE GUNS AND BULLETS COME FROM? IT IS VIRTUALLY IMPOSSIBLE FOR GUNS AND BULLETS TO BE BROUGHT IN BY VISITORS. THEY CAN BE SMUGGLED IN BY PRISON OFFICERS.

WHY ARE MR. GARD'S CURRENT ACTIONS IN TOTAL CONTRADICTION TO THE PROGRESSIVE 1974 "JUSTICE MITCHELL REPORT", WHEN HIS POLICIES ARE MEANT TO BE BASED ON THIS.

WHY IS THE PRISONS DEPT. ACTING IRRESPONSIBLY, WITH LIES AND EVASION?

WHY IS THIS VICIOUS BARRIER GOING UP, PUNISHING INNOCENT PEOPLE?

CAN YOU DENY, MR. GARD, THAT:

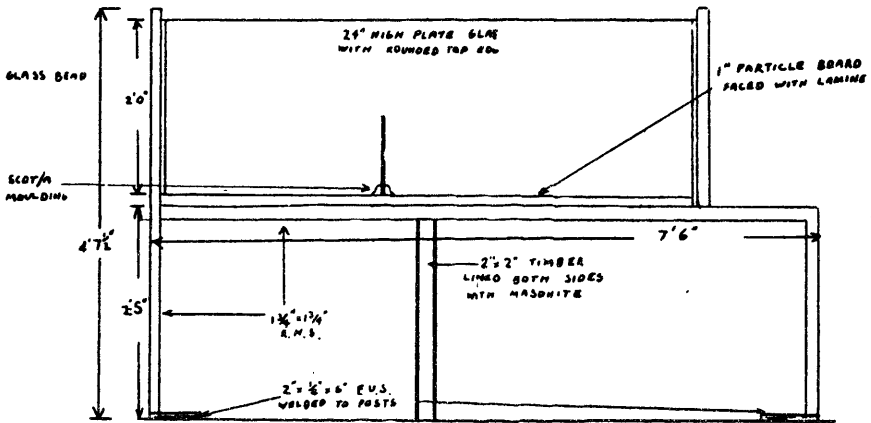
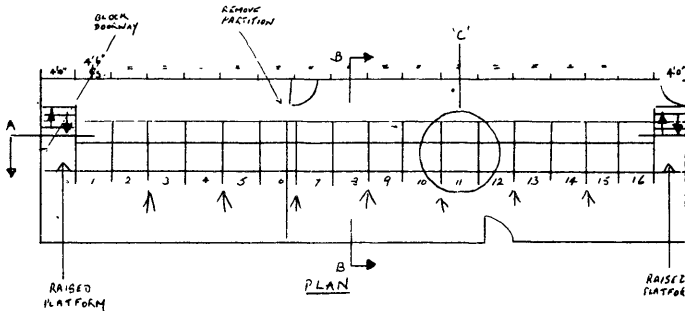
SHORTLY AFTER THE WATERTOWER PROTEST, A PRISON OFFICER WAS SACKED FOR ILLEGALLY PASSING MATERIALS, MAINLY MONEY, FROM OUTSIDE SOURCES TO PRISONERS. (NOT MADE PUBLIC)

SIX MORE OFFICERS HAVE BEEN SACKED SINCE THEN FOR REASONS TO DO WITH ILLEGAL TRAFFICKING OF MATERIALS (INCLUDING WEAPONS?) TO PRISONS. (NOT MADE PUBLIC)

THE VILE BARRIER IS ALREADY BEING CONSTRUCTED BY PRISONERS FORCED AGAINST THEIR OWN WILL TO MAKE IT. (NOT MADE PUBLIC)

# PLANS SMUGGLED OUT

THE CONSTRUCTION PLANS SHOWN HERE ARE FOR A MASSIVE BARRIER TO BE ERECTED IN THE VISITING SECTION AT YATALA, TO ENFORCE COMPLETE SEPARATION OF PRISONERS FROM FAMILIES AND FRIENDS. AGAINST THEIR WILL, PRISONERS HAVE ALREADY BEEN FORCED TO START CONSTRUCTING THIS BARRIER IN PRISON WORKSHOPS. WHEN IN PLACE, THE BARRIER WILL KEEP PRISONERS AND VISITORS OVER 7 FEET APART. STUFFED IN WOOD AND LAMINEX CUBLICES, THEY WILL HAVE TO CONVERSE ACROSS THIS TERRIBLE GAP. GUARDS ON THE RAISED PLATFORMS AT EACH END WILL OVERSEE AND OVERHEAR EVERYTHING. "VISITS" WILL SIMPLY BE A BITTER TORTURE.



SECTION B-B

WE ASK HUMANE CITIZENS TO WRITE TO THE PREMIER, CHIEF SECRETARY, ATTORNEY-GENERAL, ETC., SEEKING CLEAR ANSWERS TO THE QUESTIONS WE HAVE RAISED.

THIS LEAFLET IS PRODUCED BY CONCERNED RELATIVES AND FRIENDS OF YATALA PRISONERS.