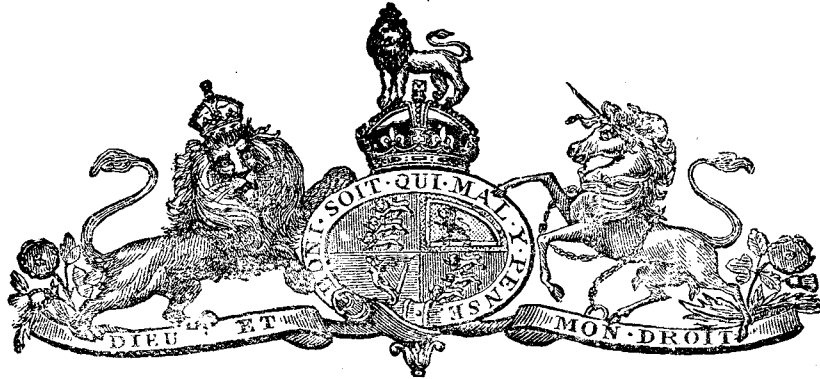


T A S M A N I A.



1905.

ANNO QUINTO

EDWARDI VII. REGIS,

No. 17.



AN ACT to grant and apply a Sum out of A.D. 1905.  
the Consolidated Revenue Fund to the  
Service of the Year ending the Thirtieth  
day of *June*, One thousand nine hundred and  
six, and to appropriate the Supplies granted  
for such Year in this Session of the  
Parliament. [30 October, 1905.]

**BE** it enacted by His Excellency the Governor of *Tasmania*, by and  
with the advice and consent of the Legislative Council and House of  
Assembly, in Parliament assembled, as follows:—

**1** This Act may be cited as “The Appropriation Act, 1905–6.” Short title.

**2** The Treasurer may issue out of the Consolidated Revenue Fund Issue and appli-  
cation of  
of *Tasmania*, and apply towards making good the Supply hereby £333,384 13s. 1d.  
granted to His Majesty for the Service of the year ending the  
Thirtieth day of *June*, One thousand nine hundred and six, the Sum  
of Three hundred and thirty-three thousand three hundred and eighty-  
four Pounds Thirteen Shillings and One Penny.

4s.]

*Appropriation, 1905-6.*

A.D. 1905.

Appropriation of  
Supplies.

**3** All sums granted by this Act and "The Supply Act (No. 1), 1905-6," out of the Consolidated Revenue Fund towards making good the Supply granted to His Majesty, amounting, as appears by the First Schedule to this Act, in the aggregate to the Sum of Four hundred and forty-three thousand three hundred and eighty-four Pounds Thirteen Shillings and One Penny, are appropriated, and shall be deemed to have been appropriated as from the date of the passing of "The Supply Act (No. 1), 1905-6," for the purposes and services expressed in the Second Schedule.

Moneys payable  
by Warrant of  
the Governor.

**4** The Treasurer shall issue and pay the several sums to such persons for the purposes in the said Second Schedule mentioned, upon such days and in such proportions as the Governor, by any Warrant under his hand, from time to time orders and directs; and the payments so to be made shall be charged upon and payable out of the Consolidated Revenue Fund.

Credit to be  
given to the  
Treasurer in  
Accounts.

**5** The said Treasurer shall be allowed credit in his Accounts for any sums of money paid by him in pursuance of any such Warrant as aforesaid; and the receipts of the respective persons to whom the same are so paid shall be a full and valid discharge to the said Treasurer in passing his said Accounts for any such sums as are therein mentioned, and he shall receive credit for the same accordingly.

**FIRST SCHEDULE.**

## GRANTS OUT OF THE CONSOLIDATED REVENUE FUND.

	£	s.	d.
Under "The Supply Act (No. 1), 1905-6" .....	110,000	0	0
Under this Act .....	333,384	13	1
	<u>£443,384</u>	<u>13</u>	<u>1</u>

## Appropriation, 1905-6.

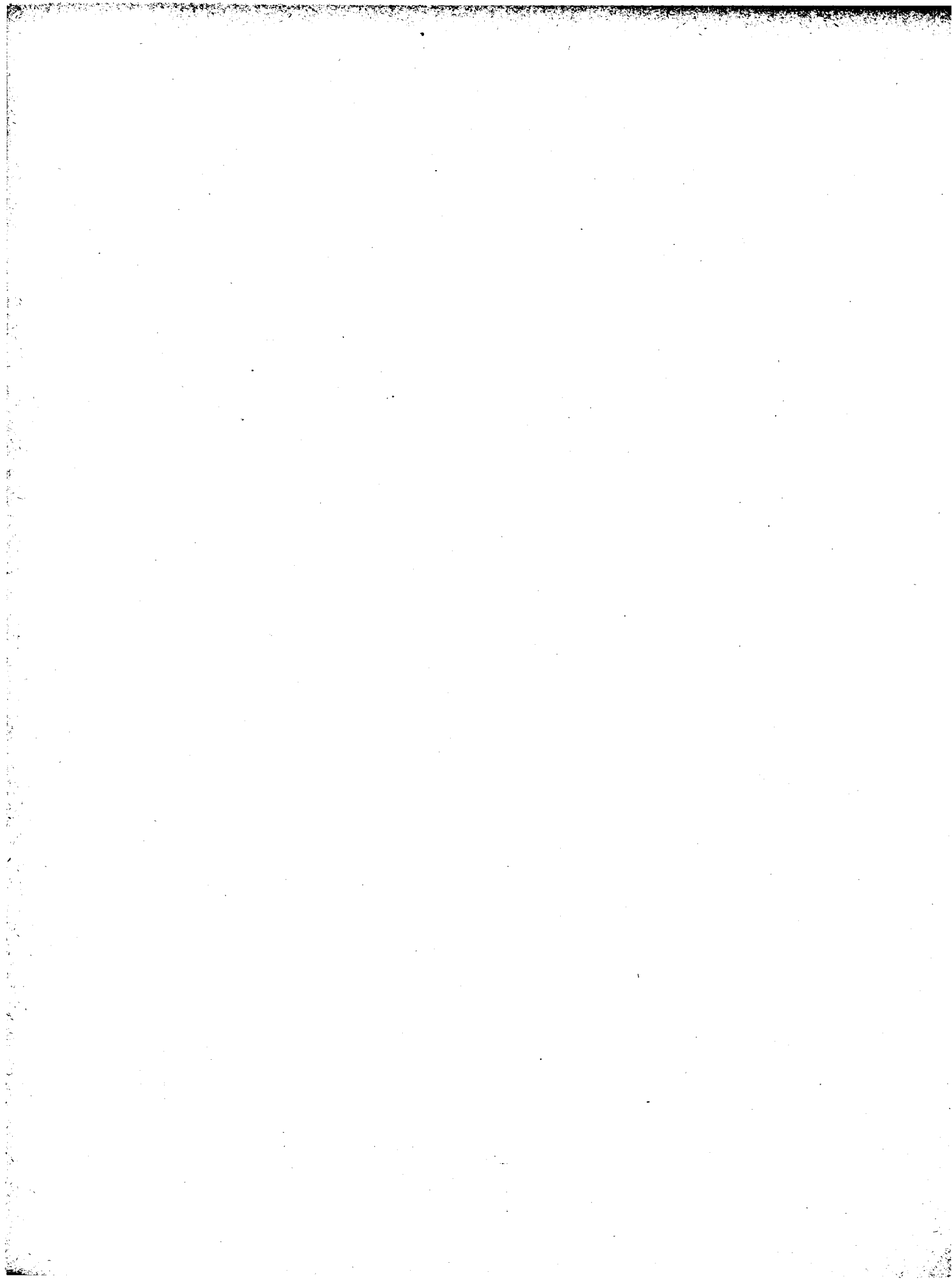
## SECOND SCHEDULE.

# AUTHORISED EXPENDITURE

CHARGEABLE ON  
CONSOLIDATED REVENUE FUND  
FOR THE YEAR 1905-6.

Departmental Number		1904-5.			1905-6.			To be reserved by Law.			To be voted.		
		£	s.	d.	£	s.	d.	£	s.	d.	£	s.	d.
<b>PREMIER—</b>													
1	His Excellency the Governor's Establishment .....	3493	13	10	3452	0	0	3310	0	0	142	0	0
2	Ministerial .....	3450	0	0	3400	0	0	3200	0	0	200	0	0
3	Premier's Office .....	415	15	0	418	0	0	..	..	..	418	0	0
4	Executive Council .....	6	0	0	6	0	0	..	..	..	6	0	0
5	Agent-General in England .....	1320	0	0	1320	0	0	1310	0	0	10	0	0
6-7	Education .....	67,882	10	0	67,180	0	0	4000	0	0	63,180	0	0
8	Miscellaneous .....	140	0	0	430	0	0	..	..	..	430	0	0
<b>CHIEF SECRETARY—</b>													
9	Legislature .....	11,988	11	8	12,294	6	8	6118	6	8	6176	0	0
10	Chief Secretary's Department .....	1020	15	0	1040	0	0	..	..	..	1040	0	0
11	Audit Department .....	2755	0	0	2845	0	0	500	0	0	2345	0	0
12	Statistical & Registration Department .....	2911	0	0	2911	0	0	..	..	..	2911	0	0
13	Inspection of Machinery .....	1281	0	0	1281	0	0	..	..	..	1281	0	0
14	Public Buildings .....	1528	0	0	1528	0	0	..	..	..	1528	0	0
15	Pensions .....	12,527	0	0	12,608	16	5	12,263	13	4	345	3	1
16-25	Charitable and Medical Institutions ..	49,491	1	6	48,693	0	0	..	..	..	48,693	0	0
26	Magazines and Explosives .....	414	5	0	415	0	0	..	..	..	415	0	0
27	Civil Service Board .....	269	0	0	205	0	0	180	0	0	25	0	0
28	Stores Department to 31 August ....	153	13	4	See Treasury	..	..	..	..	..	..	..	..
	Miscellaneous .....	3967	0	0	4267	0	0	1750	0	0	2517	0	0
<b>TREASURER—</b>													
29	Treasury .....	* 4580	6	8	4774	0	0	..	..	..	4774	0	0
30	Office of Taxes .....	4140	0	0	5052	0	0	..	..	..	5052	0	0
31	Printing Department .....	10,036	0	0	10,476	0	0	..	..	..	10,476	0	0
32	State Savings Bank .....	2076	0	0	1100	0	0	..	..	..	1100	0	0
	Department of Mines .....	5694	0	0	See No. 58	..	..	..	..	..	..	..	..
33	Interest .....	352,583	0	0	352,402	0	0	352,402	0	0	..	..	..
34	Sinking Funds .....	29,969	0	0	27,779	0	0	24,232	0	0	3547	0	0
35	Miscellaneous .....	3530	0	0	2990	0	0	..	..	..	2990	0	0
<b>ATTORNEY-GENERAL—</b>													
36-44	Judicial .....	15,906	15	8	15,325	0	0	4350	0	0	10,975	0	0
45-51	Magistracy .....	4507	6	8	4537	10	0	..	..	..	4537	10	0
52	Police .....	36,519	10	0	35,727	0	0	..	..	..	35,727	0	0
53-55	Goals .....	6021	0	0	5971	0	0	..	..	..	5971	0	0
<b>MINISTER OF LANDS AND WORKS—</b>													
56-57	Lands and Works Departments .....	9748	0	0	9644	0	0	..	..	..	9644	0	0
58	Department of Mines .....	See Treasurer.	..	..	5329	0	0	..	..	..	5329	0	0
59	Agricultural and Stock Department ..	..	..	..	2006	0	0	..	..	..	2006	0	0
60	Council of Agriculture .....	..	..	..	1645	0	0	..	..	..	1645	0	0
61	Railways .....	176,290	10	0	177,539	0	0	..	..	..	177,539	0	0
62	Roads, Bridges, Surveys, &c. ....	18,475	9	0	25,485	0	0	1000	0	0	24,485	0	0
63	Miscellaneous .....	125	0	0	125	0	0	..	..	..	125	0	0
64	MISCELLANEOUS—General .....	6270	0	0	5800	0	0	..	..	..	5800	0	0
		£ 354,864	16	10	858,000	13	1	414,616	0	0	443,384	13	1

\* Including Stores Department from 1 September.



## Appropriation, 1905-6.

**Premier.**

	CLASSIFICATION.		For 1904-5.		For 1905-6.	
	Division.	Class.	Fixed Establishment.		Fixed Establishment.	
			£	s d.	£	s d.
<b>I.—HIS EXCELLENCY THE GOVERNOR'S ESTABLISHMENT.</b>						
SALARIES.						
1 His Excellency the Governor, including Allowance .....			2705	0 0	2750	0 0
Private Secretary, from 1 July to 28 October, at £250 .....			81	6 4	..	..
Private Secretary to Sir A. E. Havelock (half-salary from 1 to 16 July, 1904) .....			5	7 6	..	..
2 Office Attendant and Caretaker, with Quarters, say £20 .....	G	C	90	0 0	90	0 0
3 Overseer of Grounds .....	G	C	80	0 0	80	0 0
			<u>£2961</u>	<u>13 10</u>	<u>£2920</u>	<u>0 0</u>
CONTINGENCIES.						
4 Maintenance of Government House, under 56 Vict. No. 11 .....			400	0 0	400	0 0
5 Stationery, Stores, Fuel, Light, Printing, Newspapers (for offices), Uniform for Office Attendant, and Maintenance of Gas Lamps at Gates .....			55	0 0	55	0 0
6 Postage, Telegrams, and Telephones .....			77	0 0	77	0 0
			<u>532</u>	<u>0 0</u>	<u>532</u>	<u>0 0</u>
<i>Total His Excellency the Governor....</i>			<u>£3493</u>	<u>13 10</u>	<u>£3452</u>	<u>0 0</u>
Reserved by Law .....			£3310	0 0		
To be voted .....			142	0 0		
			<u>£3452</u>	<u>0 0</u>		
<b>II.—MINISTERIAL.</b>						
SALARIES.						
1 Premier .....			200	0 0	200	0 0
2 Chief Secretary .....			750	0 0	750	0 0
3 Treasurer .....			750	0 0	750	0 0
4 Attorney-General .....			750	0 0	750	0 0
5 Minister of Lands .....			750	0 0	750	0 0
			<u>3200</u>	<u>0 0</u>	<u>3200</u>	<u>0 0</u>
CONTINGENCIES.						
6 Travelling Expenses of Ministers, Carriage Hire, and Miscellaneous Expenses .....			250	0 0	200	0 0
<i>Total Ministerial .....</i>			<u>£3450</u>	<u>0 0</u>	<u>£3400</u>	<u>0 0</u>
Reserved by Law .....			£3200	0 0		
To be voted .....			200	0 0		
			<u>£3400</u>	<u>0 0</u>		

## Appropriation, 1905-6.

## PREMIER—continued.

	CLASSIFICATION.		For 1904-5.	For 1905-6.
	Division.	Class.	Fixed Establishment.	Fixed Establishment.
<b>III.—PREMIER'S OFFICE.</b>				
SALARIES.				
1 Secretary to Premier; also Clerk to Executive Council.....	C	1A	£ 220 0 0	£ 220 0 0
2 Clerk, £50 for July, £77 from 1 August .....	C	4	74 15 0	77 0 0
			294 15 0	297 0 0
CONTINGENCIES.				
3 Stationery, Stores, and Sundries .....			40 0 0	40 0 0
4 Postage, Telegrams, and Telephone .....			66 0 0	66 0 0
5 Printing .....			15 0 0	15 0 0
			121 0 0	121 0 0
<i>Total Premier's Office .....</i>			£415 15 0	£418 0 0
<b>IV.—EXECUTIVE COUNCIL.</b>				
SALARIES.				
Clerk; also Secretary to Premier .....	C	1A	..	..
CONTINGENCIES.				
1 Stationery, Stores, and Sundries .....			6 0 0	6 0 0
<i>Total Executive Council.....</i>			£6 0 0	£6 0 0
<b>V.—AGENT-GENERAL IN ENGLAND.</b>				
SALARIES.				
1 Agent-General.....			400 0 0	400 0 0
2 Secretary and Chief Clerk .....	C	2	250 0 0	250 0 0
3 Junior Clerk .....	C	4	120 0 0	120 0 0
			770 0 0	770 0 0
CONTINGENCIES.				
4 Travelling and Miscellaneous Expenses; Stationery, Stores, and Incidental Expenses; Rent of Office; (Income Tax, Agent-General and Staff, 1904-5) .....			550 0 0	550 0 0
<i>Total Agent-General's Department.....</i>			£1320 0 0	£1320 0 0
Reserved by Law .....			£1310	
To be voted .....			10	
			£1320	

## Appropriation, 1905-6.

## PREMIER—continued.

	CLASSIFICATION.		For 1904-5.			For 1905-6.		
	Division.	Class.	Fixed Establishment.			Fixed Establishment.		
			£	s.	d.	£	s.	d.
<b>Education.</b>								
<b>VI.—EDUCATION DEPARTMENT.</b>								
<b>SALARIES.</b>								
1 Director of Education, (£450 from 1 July to 31 December, 1904, £600 from 1 January, 1905.)	P	1	525	0	0	600	0	0
2 Secretary, (£375 from 1 July to 31 December, £450 from 1 January, 1905) .....			412	10	0	450	0	0
Inspector of Schools; also Inspector Industrial Schools .....	P	2	325	0	0	} included in Item 14.		
Inspector of Schools, ditto .....	P	2	300	0	0			
Inspector of Schools, ditto .....	P	2	250	0	0			
3 Chief Clerk and Accountant .....	C	3	180	0	0	180	0	0
4 Clerk .....	C	4	140	0	0	140	0	0
5 Clerk .....	C	4	135	0	0	135	0	0
6 Clerk .....	C	4	75	0	0	85	0	0
7 Clerk .....	C	4	65	0	0	75	0	0
8 Clerk .....	C	4	30	0	0	40	0	0
9 Truant Officer .....	G	4	120	0	0	120	0	0
10 Truant Officer; also Inquiring Officer Charitable Institutions, £25; and Inspecting Officer Neglected Children, £20 .....	G	4	100	0	0	100	0	0
11 Truant Officer, (2 at £30 each, 1 at £25, in 1904-5) .....	G	4	85	0	0	30	0	0
12 Messenger, with Quarters, say £20 .....	G	C	100	0	0	100	0	0
13 Caretaker, Launceston—also Office Keeper, Public Building, Launceston, £90, with Quarters, Fuel, and Light .....	G	4	15	0	0	15	0	0
			2857	10	0	2070	0	0
14 Salaries and Allowances to Inspectors and Teachers and Maintenance of Schools under the Education Department (including Training Schools, Manual Training Schools, and Domestic Economy Schools). Teachers in State Schools and Provisional Schools to be paid in accordance with the scale in the Regulations under the Education Act of 1885, and in no case shall a Teacher be paid a salary exceeding the maximum of his class. Salaries and Allowances to Teachers, and Maintenance of Schools under Education Department Model School, including Salaries and Boarding Allowances of Students and Teachers on probation .....			51,100	0	0	51,170	0	0
15 Repairs and Improvements to State Schools. ....			300	0	0	1900	0	0
			1900	0	0	1900	0	0
			53,300	0	0	53,070	0	0
16 For purposes of Technical Education .....			1700	0	0	1700	0	0
17 School of Mines, Zeehan .....			700	0	0	700	0	0
18 School of Mines, Beaconsfield .....			250	0	0	250	0	0
			2650	0	0	2650	0	0
<i>Carried forward</i> .....			58,807	10	0	57,790	0	0

## Appropriation, 1905-6.

## PREMIER—continued.

	CLASSIFICATION.		For 1904-5.	For 1905-6.
	Division.	Class.	Fixed Establishment.	Fixed Establishment.
			£ s. d.	£ s. d.
<b>EDUCATION DEPARTMENT—continued.</b>				
<i>Brought forward</i> .....			58,807 10 0	57,790 0 0
<b>CONTINGENCIES.</b>				
19 Expenditure, Boards of Advice, Repairs, Cleansing Out-offices, and Fuel, State Schools . . . .			..	2000 0 0
20 Boards of Advice—Salaries of Secretaries, Postages, Stationery, and Sundries . . . . .			..	500 0 0
Expenditure to be administered by Boards of Advice, viz.—Petty Repairs and Improvements, Cleansing, and Fuel, State Schools; also Clerical Assistance to Boards of Advice..			3000 0 0	..
21 School Cleaning and General Maintenance (half-year) .....			..	500 0 0
22 Stationery and Stores .....			60 0 0	60 0 0
23 Travelling Expenses of Director, Inspectors, and Officers of Department .....			700 0 0	900 0 0
24 For purposes of Instruction in Physical Culture, including Salary of Instructor, £180.....			250 0 0	250 0 0
25 Printing .....			200 0 0	400 0 0
26 Free Railway Tickets for Scholars.....			450 0 0	330 0 0
27 Postage, Telegrams, and Telephones.....			415 0 0	300 0 0
28 Education of Deaf Mutes (half-year) .....			..	150 0 0
			5075 0 0	5390 0 0
<i>Total Education Department</i> .....			63,882 10 0	63,180 0 0
<i>Estimated Revenue for School Fees</i> .....				13,500 0 0
<b>VII.—TASMANIAN UNIVERSITY.</b>				
Contribution in terms of Section 22 of Act 53 Vict. No. 41.....			4000 0 0	4000 0 0
Reserved by Law .....			<u>£4000</u>	
<b>TOTAL EDUCATION</b> .....			<u>£67,882 10 0</u>	<u>£67,180 0 0</u>
<b>VIII.—MISCELLANEOUS. Premier.</b>				
1 Cost of Parliamentary and other Papers and Books from England .....			50 0 0	50 0 0
2 Cost of Publications, including Photographs, sent to England and elsewhere . . . . .			90 0 0	80 0 0
3 Expenses connected with Royal Commission on Civil Service.....			..	300 0 0
			<u>£140 0 0</u>	<u>£430 0 0</u>



## Appropriation, 1905-6.

**Chief Secretary.**

	CLASSIFI- CATION.		For 1904-5	For 1905-6.
	Division.	Class.	Fixed Establishment	Fixed Establishment.
			£ s. d.	£ s. d.
<b>Legislature.</b>				
IX.—HOUSES OF PARLIAMENT.				
LEGISLATIVE COUNCIL.				
SALARIES.				
1	President .....		350 0 0	350 0 0
2	Chairman of Committees .....		150 0 0	150 0 0
3	Clerk of the Council; also Pension, £366 13s. 4d. ....		33 6 8	33 6 8
4	Clerk Assistant and Usher of the Black Rod...		120 0 0	120 0 0
5	Office Keeper and Messenger—Quarters, Fuel, Light, and Water, say £30 a year .....		95 0 0	95 0 0
			748 6 8	748 6 8
CONTINGENCIES.				
6	Incidental Expenses, including Catering, Station- ery, Stores, and Uniform for Messengers .....		130 0 0	130 0 0
7	Postage, Telegraphs, and Telephones .....		12 5 0	13 0 0
			142 5 0	143 0 0
			£890 11 8	891 6 8
	<i>Total Legislative Council.....</i>			

## Appropriation, 1905-6.

## CHIEF SECRETARY—continued.

	CLASSIFICATION.		For 1904-5.	For 1905-6.				
	DIVISION.	CLASS.	Fixed Establishment.					
			£	s.	d.	£	s.	d.
<b>HOUSE OF ASSEMBLY.</b>								
<b>SALARIES.</b>								
1			350	0	0	350	0	0
2			250	0	0	250	0	0
3			375	0	0	375	0	0
4			100	0	0	100	0	0
5			140	0	0	140	0	0
6			120	0	0	120	0	0
			75	0	0	80	0	0
7			1410	0	0	1415	0	0
<b>CONTINGENCIES.</b>								
8			250	0	0	250	0	0
9			120	0	0	120	0	0
10			33	0	0	33	0	0
11			35	0	0	35	0	0
			438	0	0	438	0	0
<i>Total House of Assembly.....</i>			£1848	0	0	1853	0	0
<b>GENERAL.</b>								
1			£4500	0	0	£4500	0	0
<i>Total Ordinary Expenditure Houses of Parliament</i>			£7238	11	8	£7244	6	8
<b>ELECTORAL.</b>								
1			500	0	0	500	0	0
2			200	0	0	1000	0	0
3			50	0	0	50	0	0
<i>Total Electoral.....</i>			£750	0	0	£1550	0	0

## Appropriation, 1905-6.

CHIEF SECRETARY—*continued.*

	CLASSIFICATION.		For 1904-5.	For 1905-6.
	Division.	Class.	<i>Fixed Establishment.</i>	<i>Fixed Establishment.</i>
			£ s. d.	£ s. d.
<b>SPECIAL SERVICES.</b>				
1 Railway-passes for Members and Wives .....			2000 0 0	2000 0 0
2 Printing—Bills; Notice Papers and Journals, &c.; Parliamentary Papers; Acts; Electoral Rolls; and printing generally, including publications for exchange .....			2000 0 0	1500 0 0
<i>Total Special Services</i> .....			<u>£4000 0 0</u>	<u>£3500 0 0</u>
TOTAL LEGISLATURE .....			<u>11,988 11 8</u>	<u>£12,294 6 8</u>
To be reserved by Law .....			£6118 6 8	
To be voted.....			6176 0 0	
			<u>£12,294 6 8</u>	
<b>X.—CHIEF SECRETARY'S DEPARTMENT.</b>				
<b>SALARIES.</b>				
1 Under Secretary .....	C	1A	300 0 0	300 0 0
2 Clerk .....	C	4	135 0 0	135 0 0
3 Clerk (Meteorological), with Quarters, £30....	P	2	90 0 0	120 0 0
4 Clerk .....	C	4	60 0 0	70 0 0
5 Messenger (with Quarters, Fuel, and Light, say £20) .....	G	C	80 0 0	80 0 0
			<u>665 0 0</u>	<u>705 0 0</u>
<b>CONTINGENCIES.</b>				
6 Newspapers, Petty Expenses, and Stationery and Stores .....			80 0 0	70 0 0
7 Printing .....			50 0 0	40 0 0
8 Postage, Telegrams, and Telephones.....			110 15 0	110 0 0
9 Fuel, Light, Instruments, Stationery, Stores, Printing, and Miscellaneous (Meteorological)			48 0 0	48 0 0
10 Allowances to Meteorological Observers .....			67 0 0	67 0 0
			<u>355 15 0</u>	<u>335 0 0</u>
<i>Total Chief Secretary's Department</i> ...			<u>£1020 15 0</u>	<u>£1040 0 0</u>

## Appropriation, 1905-6.

## CHIEF SECRETARY—continued.

		CLASSIFI- CATION.	For 1904-5.			For 1905-6.		
		Division.	Fixed Establishment.			Fixed Establishment.		
		Class.	£	s.	d.	£	s.	d.
<b>XI.—AUDIT DEPARTMENT.</b>								
SALARIES.								
1	Auditor-General (also Deputy-Auditor, Com- wealth, £100)	C	500	0	0	500	0	0
2	Chief Clerk	C	280	0	0	280	0	0
3	Clerk	C	175	0	0	175	0	0
4	Clerk	C	175	0	0	175	0	0
5	Clerk	C	160	0	0	160	0	0
6	Clerk	C	160	0	0	160	0	0
7	Clerk	C	150	0	0	150	0	0
8	Clerk	C	140	0	0	140	0	0
9	Clerk (Stores)					120	0	0
10	Clerk	C	100	0	0	105	0	0
11	Clerk	C	100	0	0	105	0	0
12	Clerk	C	100	0	0	60	0	0
13	Clerk	C	50	0	0	35	0	0
14	Clerical Assistant		110	0	0	110	0	0
15	Messenger—also Stores Department, £10	G	80	0	0	80	0	0
CONTINGENCIES.								
16	Travelling Expenses		2280	0	0	2355	0	0
17	Stationery, Stores, Advertising, and Incidental Expenses		300	0	0	330	0	0
18	Printing		35	0	0	35	0	0
19	Postage, Telegrams, and Telephones		75	0	0	55	0	0
			65	0	0	70	0	0
<i>Total Audit Department</i>			475	0	0	490	0	0
			£2755	0	0	£2845	0	0
Reserved by Law			£500	0	0			
To be voted			2345	0	0			
			£2845	0	0			
<i>Estimated Revenue for Services rendered</i>						400	0	0
<b>XII.—STATISTICAL AND REGISTRA- TION DEPARTMENT.</b>								
SALARIES.								
1	Statistician and Registrar-General	P	600	0	0	600	0	0
2	Assistant Statistician, Chief Clerk, and Registrar for Hobart	C	325	0	0	325	0	0
3	Clerk	C	210	0	0	210	0	0
4	Clerk, Friendly Societies; also Returning Officer, £20	C	200	0	0	200	0	0
5	Clerk; also Returning Officer, £10	C	170	0	0	170	0	0
6	Clerk	C	70	0	0	80	0	0
7	Registrar, Launceston—also Registrar of Mines, Launceston, £125, and Clerk Lands Office, £125	C	20	0	0	20	0	0
8	Resident Messenger—also Messenger to Lands and Surveys, £50, with Quarters, Fuel, and Light, estimated at £20	G	50	0	0	50	0	0
ALLOWANCES.								
9	To Country Registrars		1645	0	0	1655	0	0
			550	0	0	550	0	0
CONTINGENCIES.								
10	Registers for Births and Deaths, Incidental Ex- penses, Cost of collecting Statistics, Stationery and Stores, &c.		60	0	0	50	0	0
11	Printing		550	0	0	550	0	0
12	Postage, Telegrams, and Telephones		106	0	0	106	0	0
			716	0	0	706	0	0
<i>Total Statistical and Registration Department</i>			£2911	0	0	£2911	0	0
<i>Estimated Revenue for Services rendered</i>						470	0	0

## Appropriation, 1905-6.

## CHIEF SECRETARY—continued.

	CLASSIFICATION.		For 1904-5.	For 1905-6.
	Division.	Class.	Fixed Establishment.	Fixed Establishment.
			£ s. d.	£ s. d.
<b>XIII.—INSPECTION OF MACHINERY.</b>				
SALARIES.				
1 Chief Inspector of Machinery, also Chief Inspector of Explosives, also Examiner in Steam, say £12 .....	P	1A	285 0 0	285 0 0
2 Assistant Inspector, also Examiner in Steam, say £5 .....	G	3	210 0 0	210 0 0
3 Second Assistant ditto .....	G	3	210 0 0	210 0 0
4 Third Assistant ditto and Clerk, also Adviser, Hobart Corporation on Mechanical Engineering, say £12 .....	G	3	190 0 0	190 0 0
			895 0 0	895 0 0
CONTINGENCIES.				
5 Travelling Expenses .....			275 0 0	275 0 0
6 Stationery, Stores, Instruments and Books, Printing, and Incidental Expenses .....			72 0 0	0 0
7 Postage, Telegrams, and Telephones .....			39 0 0	39 0 0
			386 0 0	386 0 0
<i>Total Inspection of Machinery.....</i>			£1281 0 0	£1281 0 0
<i>Estimated Revenue for Services rendered.....</i>			..	1100 0 0
<b>XIV.—PUBLIC BUILDINGS.</b>				
SALARIES.				
1 Head Office Keeper, Hobart, and Supervisor of Stores—with Quarters, Fuel, Light, and Water, say £30 a year .....	G	C	160 0 0	160 0 0
2 Office Keeper Public Buildings, Davey-street, also Messenger to Minister of Lands, and Mines Department, with Quarters, Fuel, Light, and Water, say £30 a year .....	G	C	130 0 0	130 0 0
Relieving Messenger and Porter .....	G	C	75 0 0	80 0 0
4 Office Keeper, Launceston—also Caretaker Education Department, £15, with Quarters, Fuel, Light, and Water, say £30 a year .....	G	C	90 0 0	90 0 0
			455 0 0	460 0 0
ALLOWANCES.				
5 Office Keeper, Launceston, for Assistance in lighting Fires, &c., in the various Departments in the Public Buildings .....			6 0 0	6 0 0
CONTINGENCIES.				
6 Fuel, Light, and Water, Public Offices, Hobart			870 0 0	870 0 0
7 Fuel, Light, and Water, ditto, Launceston .....			80 0 0	80 0 0
8 Stores for Offices generally .....			25 0 0	25 0 0
9 Fuel and Light, Country Public Offices .....			10 0 0	5 0 0
10 Uniforms for Office Keepers and Messengers, Hobart and Launceston .....			70 0 0	70 0 0
11 Telephone Service .....			12 0 0	12 0 0
			1067 0 0	1062 0 0
<i>Total Public Buildings . . . . .</i>			£1528 0 0	£1528 0 0

Appropriation, 1905-6.

CHIEF SECRETARY—continued.

	CLASSIFICATION.		For 1904-5.	For 1905-6.
	Division.	Class.	Fixed Establishment.	Fixed Establishment.
			£ s. d.	£ s. d.
<b>XV.—Pensions, Retired Allowances, &amp;c.</b>				
<i>For the purposes of The Public Debts Sinking Funds Act.</i>				
56 Vict. No. 24 .....			} 11,947 0 0	11,947 0 0*
58 Vict. No. 23 .....				
59 Vict. No. 40 .....				
60 Vict. No. 25 .....				
61 Vict. No. 12 .....				
2 Edw. 7 No. 29 .....				
J. Hurford, late Caretaker Government House..			..	78 9 9
W. R. Cooke, late Compositor, Printing Department .....			..	120 0 0
F. W. Abbott, late Draftsman, Lands and Surveys Department.....			..	146 13 4
B. Shaw, late Police Magistrate, Hobart .....			..	150 0 0*
Geo. Browne, late Judges' Associate, and Curator Intestate Estates (additional) .....			..	166 13 4*
To be voted for Pensions, J. Hurford, W. R. Cooke, F. W. Abbott, B. Shaw, and additional, G. Browne .....			580 0 0	
Reserved by Law .....		£12,263 13 4*	12,527 0 0	12,608 16 5
To be voted .....		345 3 1		
		<u>£12,608 16 5</u>		
<b>Charitable and Medical Institutions.</b>				
<b>XVI.—CHARITABLE DEPARTMENT.</b>				
SALARIES.				
1 Administrator & Registrar of Charitable Institutions; also Superintendent New Town Charitable Institution; Superintendent Boys' Training School; and Secretary Neglected Children Department, with Quarters, Fuel, Light, and Water, say £70 a year .....	C	1A	300 0 0	300 0 0
2 Clerk, also Clerk, New Town Charitable Institution, and Clerk Neglected Children Department, also Collector Charitable Institutions, at a Commission of 5 per cent., with Quarters, Fuel, and Light, say £20 a year .....	C	4	110 0 0	110 0 0
3 Junior Clerk .....	C	P	33 6 8	44 0 0
Carried forward. ....			<u>443 6 8</u>	<u>454 0 0</u>

Appropriation, 1905-6.

CHIEF SECRETARY—continued.

	CLASSIFICATION.		For 1904-5.	For 1905-6.
	Division.	Class.	Fixed Establishment.	Fixed Establishment.
<b>CHARITABLE DEPARTMENT—continued.</b>				
<i>Brought forward.....</i>			£ s. d. 443 6 8	£ s. d. 454 0 0
4 Inquiring Officer, Hobart, also Inspector Neglected Children Department, and Store-keeper, Charitable Department, £12, with Quarters, £30 .....	G	D	150 0 0	150 0 0
5 Inquiring Officer, Launceston; also Truant Officer, £100; & Inspecting Officer Neglected Children, Launceston, also Collector Charitable Institutions, at a commission of 10 per cent...	G	D	45 0 0	45 0 0
			638 6 8	649 0 0
CONTINGENCIES.				
6 Out-door Relief, Medical Attendance on Paupers in Hobart, Launceston, & Country Districts, Temporary Provision for Tramps, and Maintenance of Destitute Persons not otherwise provided for .....			3000 0 0	3000 0 0
7 Maintenance of Deaf, Dumb, and Blind Children, Maintenance of Paupers in Country Hospitals (Maintenance of Destitute Persons not otherwise provided for in 1904-5), Examination of Insane, Stationery and Stores, and Miscellaneous Expenses .....			1100 0 0	900 0 0
8 Transport and Funeral Expenses .....			300 0 0	300 0 0
9 Postage, Telegrams, and Telephones .....			100 0 0	90 0 0
10 Printing .....			30 0 0	25 0 0
			4530 0 0	4315 0 0
<i>Total Charitable Department.....</i>			5168 6 8	4964 0 0
 <b>XVII.—TRAINING SCHOOL FOR BOYS, AND FARM.</b>				
SALARIES.				
1 Superintendent—also Superintendent New Town Charitable Institution, Administrator of Charitable Grants, and Secretary Neglected Children Department .....	G	1A	See Charitable Department.	
2 Farm Overseer, with Quarters, Fuel, Light, and Ration, £41 a year .....	G	A-3	120 0 0	120 0 0
3 Farm Workmaster....	G	C	70 0 0	70 0 0
4 Discipline Officer and Drill Instructor ....	G	C	80 0 0	80 0 0
5 Workmaster .....	G	C	51 13 4	50 0 0
6 Schoolmaster; also Assistant Teacher Education Department, £120 .....			15 0 0	15 0 0
7 General Help.....			20 0 0	20 0 0
			356 13 4	355 0 0
CONTINGENCIES.				
8 Provisions, Clothing, Bedding, Stores, Stationery, Fuel, Light, Alterations and Repairs to Buildings; Miscellaneous Expenses; Farm Expenses, including Derwent Park .....			750 0 0	750 0 0
<i>Total Training School for Boys, and Farm</i>			1106 13 4	1105 0 0
<i>Estimated Revenue for Services, &amp;c... ..</i>			..	580 0 0

## Appropriation, 1905-6.

## CHIEF SECRETARY—continued.

XVIII.—NEW TOWN CHARITABLE INSTITUTION.	CLASSIFICATION.		For 1904-5.		For 1905-6.	
	Division.	Class.	Fixed Establishment.		Fixed Establishment.	
SALARIES.			£	s. d.	£	s. d.
<i>Male Officers.</i>						
1 Superintendent and Storekeeper, also Administrator of Charitable Grants; Superintendent Training School for Boys; and Secretary Neglected Children Department .....						
2 Clerk, also Clerk Charitable Department; Clerk Neglected Children Department; and Collector for Charitable Institutions .....						
3 Overseer—with Quarters, Fuel, Light, and Ration, £41. .....	G	A4	85	0 0	85	0 0
4 Head Warder—with Quarters, Fuel, Light, and Ration .....	G	C	75	0 0	75	0 0
5 Four Wardsmen—with Board, Fuel, Light, and Uniform, £30 .....	G	C	240	0 0	240	0 0
6 Male and Female Attendants .....			290	0 0	280	0 0
<i>Female Officers.</i>						
7 Matron—with Quarters, Fuel and Light, and Servant, £40 .....	G	A	80	0 0	80	0 0
Head Nurse and Cook—with Quarters, Fuel, Light, and Ration, £30 .....	G	C	60	0 0	..	
8 Head Nurse—with Quarters, &c., £30 .....			40	0 0	40	0 0
9 Nurses—2 at £30 each—with Quarters, &c., £30 .....			..		60	0 0
			870	0 0	860	0 0
CONTINGENCIES.						
10 Stores, Stationery, Clothing, and Bedding, Provisions, Fuel, Light, Medicines and Medical Comforts, Miscellaneous, including Funeral Expenses, Repairs, including Fencing .....			3800	0 0	3800	0 0
11 Re-shingling Buildings .....			..		100	0 0
			£3800	0 0	£3900	0 0
<i>Total New Town Charitable Institution....</i>			£4670	0 0	£4760	0 0
<i>Estimated Revenue for Service, &amp;c. ....</i>			..		235	0 0
XIX.—NEGLECTED CHILDREN DEPARTMENT.						
CONTINGENCIES.						
1 Rations, Fuel and Light, and Miscellaneous ..			20	0 0	20	0 0
INDUSTRIAL SCHOOLS AND TRAINING SCHOOL FOR GIRLS.						
<i>Contributions towards Children detained in the under-mentioned Institutions under the provisions of the "Industrial Schools Act:—"</i>						
2 Boys' Home, Hobart .....			364	0 0	364	0 0
3 Industrial School for Females, Hobart .....			250	0 0	250	0 0
4 St. Joseph's Orphanage, Hobart.....			300	0 0	300	0 0
5 Industrial School for Females, Launceston, including Teacher's salary, £25.....			230	0 0	282	0 0
Training School for Girls, Hobart .....			55	0 0	..	
			1199	0 0	1196	0 0
<i>Carried forward.. . . . .</i>			1219	0 0	1216	0 0



## Appropriation, 1905-6.

## CHIEF SECRETARY—continued.

	CLASSIFICATION.		For 1904-5.	For 1905-6.
	Division.	Class.	Fixed Establishment.	Fixed Establishment.
<b>NEGLECTED CHILDREN DEPARTMENT—continued.</b>				
<i>Brought forward</i> .....				
6 MAINTENANCE OF DESTITUTE CHILDREN UNDER THE BOARDING-OUT SYSTEM			£ 1219 0 0	£ 1216 0 0
			2000 0 0	1800 0 0
FREE SCHOOLS.				
7 Cascades School, Watchorn-street School, Lower Collins-street School, Hobart			300 0 0	300 0 0
8 St. Luke's School, Hobart			50 0 0	50 0 0
			350 0 0	350 0 0
<i>Total Neglected Children Department.</i>			£3569 0 0	£3366 0 0
<b>XX.—INVALID DEPOT, LAUNCESTON.</b>				
SALARIES.				
1 Superintendent—with Quarters, Fuel, and Light, say £52—also Clerk Court Requests, £160			..	..
2 Assistant Superintendent—with Quarters, Fuel, and Light, say £35			150 0 0	150 0 0
3 Matron—also Female Warder, Gaol, £45	G	C	12 0 0	12 0 0
4 Nurse—with Quarters, Fuel, and Light, say £30			40 0 0	40 0 0
5 Male and Female Attendants			96 0 0	96 0 0
			298 0 0	298 0 0
CONTINGENCIES.				
6 Stores, Stationery, Clothing, Bedding, Provisions, Fuel, Light, Medicines, Medical Comforts, and Miscellaneous			702 0 0	694 0 0
7 Postage, Telegrams, and Telephones, £5; printing, £3			..	8 0 0
			702 0 0	702 0 0
<i>Total Invalid Depot, Launceston</i>			£1000 0 0	£1000 0 0
<i>Estimated Revenue for Services rendered</i>			..	60 0 0
<b>XXI.—GRANTS TO CHARITABLE INSTITUTIONS.</b>				
1 Benevolent Society, Hobart			200 0 0	200 0 0
2 Benevolent Society, Launceston			200 0 0	200 0 0
3 Blind Asylum, Hobart			300 0 0	300 0 0
<i>Total Grants to Charitable Institutions.</i>			£700 0 0	£700 0 0
<b>XXII.—GRANTS TO MEDICAL INSTITUTIONS.</b>				
1 General Hospital, Hobart			4500 0 0	4500 0 0
2 General Hospital, Launceston			4500 0 0	4500 0 0
3 General Hospital, Hobart			1300 0 0	1300 0 0
4 General Hospital, Launceston			1300 0 0	1300 0 0
5 Hospital, Zeehan			400 0 0	400 0 0
6 Ditto, Queenstown			500 0 0	400 0 0
7 Ditto, Beaconsfield			200 0 0	200 0 0
8 Ditto, Latrobe			180 0 0	180 0 0
9 Ditto, Strahan			100 0 0	100 0 0
10 Ditto, Waratah			100 0 0	100 0 0
11 Ditto, Campbell Town			60 0 0	60 0 0
12 Homœopathic Hospital, Hobart			*200 0 0	200 0 0
13 Ditto, Launceston			200 0 0	200 0 0
14 Queen Victoria Hospital, Launceston			100 0 0	100 0 0
<i>Total Grants to Medical Institutions</i>			£13,640 0 0	£13,540 0 0

\* On basis of Subscriptions and Fees raised during the twelve months ending 30th June, 1904.

## Appropriation, 1905-6.

## CHIEF SECRETARY—continued.

	CLASSIFICATION.		For 1904-5.			For 1905-6.		
	Division.	Class.	Fixed Establishment.			Fixed Establishment.		
			£	s.	d.	£	s.	d.
<b>XXIII.—HOSPITAL FOR THE INSANE, NEW NORFOLK.</b>								
<b>SALARIES.</b>								
<b>1</b> Superintendent and Medical Officer — with Quarters, Fuel, and Light, say £60 a year..	P	B 1A	550	0	0	550	0	0
<b>2</b> Assistant Medical Officer—Furnished Quarters, Fuel, and Light, £30 .....	P	B 1B	325	0	0	325	0	0
<b>3</b> Clerk and Storekeeper—Ration, £11 12s. ....	C	3	240	0	0	170	0	0
<b>4</b> Assistant Clerk—Ration, £11 12s. ....	C	4	135	0	0	120	0	0
<b>5</b> Chief Attendant—Uniform, House, Rations, &c. £43.....	G	B	160	0	0	160	0	0
<b>6</b> First Senior Attendant, £115 to 30th April, £120 from 1st May—Uniform, House, Rations, &c., £35 .....	G	C	125	0	0	116	0	0
<b>7</b> Second Senior Attendant, £100 to 30th April, £105 from 1st May—Uniform & Rations, £13 14s. 2d.....	G	C	105	0	0	101	0	0
<b>8</b> Matron — Furnished Quarters, Fuel, Light, Rations, and Attendance, £50 .....	G	A 3	150	0	0	150	0	0
<b>9</b> Sub-Matron—Furnished Quarters, Fuel, Light, &c., £40.....	G	C	100	0	0	100	0	0
<b>10</b> Working Farm Overseer—House, Ration, Fuel and Light, £25 .....	G	A 4	80	0	0	80	0	0
<b>11</b> Engineer .....	G	A 3	182	0	0	182	0	0
<b>12</b> Chairman of Official Visitors.....						52	0	0
			2152	0	0	2106	0	0
<b>ATTENDANTS.</b>								
<b>13</b> Gatekeeper † .....			70	0	0	70	0	0
<b>14</b> Carpenter †.....			94	0	0	94	0	0
<b>15</b> Painter and Plumber†.....			94	0	0	94	0	0
<b>16</b> Shoemaker † .....			75	0	0	75	0	0
<b>17</b> Baker †.....			90	0	0	90	0	0
<b>18</b> Tailor †.....			75	0	0	75	0	0
<b>19</b> Cook † .....			80	0	0	80	0	0
<b>20</b> Gardener * .....			70	0	0	70	0	0
<b>21</b> Ploughman, £70*; Milkman, £70 † .....			140	0	0	140	0	0
<b>22</b> Senior Night Attendant † .....			90	0	0	90	0	0
<b>23</b> Three Night Attendants, 1 at £80†, 2 at £75†			230	0	0	230	0	0
<b>24</b> Attendant in Charge of Sick Ward† .....			80	0	0	80	0	0
<b>25</b> Twenty-eight Attendants† from £60 to £80 per annum (Twenty-nine in 1904-5) .....			2035	0	0	1966	0	0
<b>26</b> Stokers—2 at £80†.....			160	0	0	160	0	0
<b>27</b> Nurses & Laundresses, Thirty-eight § (36 in 1904-5) .....			1520	0	0	1585	0	0
			4903	0	0	4899	0	0
<b>ALLOWANCES.</b>								
<b>28</b> Barber, for duties in connection with Morgue, 6d. per diem .....			7055	0	0	7005	0	0
			9	2	6	10	0	0
<i>Carried forward</i> .....			7064	2	6	7015	0	0

\* Rations, £11 11s. 4d. †Uniform and Rations, £13 14s. 2d. §Uniform, Ration, and House, £23 14s. 2d.  
 § Rations and Uniform, £14 8s. 6d.

## Appropriation, 1905-6.

CHIEF SECRETARY—*continued.*

	CLASSIFICATION.		For 1904-5.			For 1905-6.		
	Division.	Class.	Fixed Establishment.			Fixed Establishment.		
			£	s.	d.	£	s.	d.
<b>HOSPITAL FOR THE INSANE, NEW NORFOLK</b> — <i>continued.</i>								
<i>Brought forward</i> .....			7064	2	6	7015	0	0
<b>CONTINGENCIES.</b>								
29 Travelling Expenses of Special Visitors .....			30	0	0	30	0	0
30 Uniforms; Patients' Recreation and Petty Expenses; Provisions; Medical Comforts; Bedding, Clothing, Stores, Stationery, &c.; Fuel and Light; Conveyance of Stores; Medicines; Incidental Expenses, including Furniture, and Advertising; Coroner's Inquests and Funeral Expenses; Repairs to Buildings; <i>Locum Tenens</i> for Medical Officers, Attendants, and Nurses .....			10,500	0	0	10,250	0	0
31 Postage, Telegrams, and Telephones .....			42	0	0	52	0	0
32 Printing .....			33	0	0	33	0	0
			10,605	0	0	10,365	0	0
<i>Total Hospital for Insane</i> .....			17,669	2	6	17,380	0	0
<i>Estimated Revenue for Services</i> .....			..			4500	0	0
<b>XXIV.—HOSPITALS FOR CONTAGIOUS DISEASES.</b>								
1 Hobart .....			100	0	0	20	0	0
2 Launceston .....			165	0	0	165	0	0
<i>Total Hospitals for Contagious Diseases</i>			£265	0	0	£185	0	0
<b>XXV.—PUBLIC HEALTH DEPARTMENT.</b>								
<b>SALARIES.</b>								
1 Chief Health Officer .....	P I A	1	600	0	0	600	0	0
2 Secretary; also Under-Secretary, £300 .....								
3 Medical Officer for all Government Departments, Hobart .....			100	0	0	100	0	0
4 Port Health Officer, Hobart .....			50	0	0	50	0	0
5 Clerk .....	C	4	100	0	0	105	0	0
6 Clerk .....	C	4	33	15	0	45	0	0
7 Clerk .....			30	0	0	30	0	0
			913	15	0	930	0	0
<b>ALLOWANCES.</b>								
8 Caretaker, Quarantine Station, Barnes Bay ...			20	0	0	20	0	0
9 Ditto, for keep of 2 Cows .....			20	16	0	21	0	0
10 Assistant Caretaker, Barnes Bay .....			12	0	0	12	0	0
11 Caretaker Verulam Isolation Hospital .....			20	0	0	30	0	0
			72	16	0	83	0	0
<i>Carried forward</i> .....			986	11	0	1013	0	0

## Appropriation, 1905-6.

CHIEF SECRETARY—*continued.*

	CLASSIFI- CATION.		For 1904-5.	For 1905-6.
	Division.	Class.	<i>Fixed Establishment.</i>	<i>Fixed Establishment.</i>
			£ s. d.	£ s. d.
<i>Brought forward</i> .....			986 11 0	1013 0 0
<b>PUBLIC HEALTH DEPARTMENT— <i>continued.</i></b>				
<b>CONTINGENCIES.</b>				
12 Travelling Expenses .....			50 0 0	75 0 0
13 Contribution to Cost of Administering Public Health and Vaccination Acts .....			450 0 0	460 0 0
14 Cost of laying on Water Quarantine Station, Verulam; Interest on cost payable to Launceston Corporation .....			41 8 0	30 0 0
15 Postage, Telegrams, and Telephones .....			75 0 0	75 0 0
16 Fees for Port Health Officers, other than Hobart			50 0 0	50 0 0
17 Printing .....			50 0 0	50 0 0
			716 8 0	680 0 0
<i>Total Public Health Department</i> .....			1702 19 0	1693 0 0
<b>TOTAL CHARITABLE AND MEDICAL INSTITUTIONS</b>			£49,441 1 6	£48,693 0 0
 <b>XXVI.—MAGAZINES AND EXPLOSIVES.</b>				
<b>SALARIES.</b>				
1 Chief Inspector; also Chief Inspector Machinery	G	A4	115 0 0	115 0 0
2 Inspector, Southern District .....	G	A4	85 0 0	85 0 0
3 Inspector, Northern District .....	G	A4	50 0 0	50 0 0
4 Magazine Keeper, Strahan .....			250 0 0	250 0 0
<b>CONTINGENCIES.</b>				
5 Travelling Expenses .....			50 0 0	50 0 0
6 Stationery and Stores, Labour, Fuel, and Light, Repairs, and Miscellaneous .....			85 0 0	85 0 0
7 Postage, Telegrams, and Telephones .....			19 5 0	20 0 0
8 Printing .....			10 0 0	10 0 0
			164 5 0	165 0 0
<i>Total Magazines and Explosives</i> .....			£414 5 0	£415 0 0
<i>Estimated Revenue for Storage, &amp;c.</i> .....			..	£550 0 0

## Appropriation, 1905-6.

CHIEF SECRETARY—*continued.*

	CLASSIFICATION.		For 1904-5.	For 1905-6.
	Division.	Class.	Fixed Establishment.	Fixed Establishment.
			£ s. d.	£ s. d.
<b>XXVII.—CIVIL SERVICE BOARD.</b>				
SALARIES.				
1 Fees to Members of Board (five) ..			130 0 0	130 0 0
2 Salary of Secretary, also Chief Clerk, Railway Department, £215 ..			50 0 0	50 0 0
			180 0 0	180 0 0
CONTINGENCIES.				
3 Interest on contributions to Civil Service Fund..			64 0 0	..
4 Stationery, Stores, Printing, &c. ....			20 0 0	20 0 0
5 Postage and Telegrams .....			5 0 0	5 0 0
			89 0 0	25 0 0
<i>Total Civil Service Board</i> .....			269 0 0	205 0 0
Reserved by Law .....			£180	
To be voted .....			25	
			£205	
<b>STORES DEPARTMENT—For Months July and August, 1904.</b>				
SALARIES.				
Inspector of Stores and Secretary Board of Tenders, at £300 per annum .....	C	1A	50 0 0	} See Treasury.
Chief Clerk, at £190 ditto .....	C	3	31 13 4	
Storekeeper, at £130 ditto (with Quarters, Fuel, and Light, £30).....	C	4	21 13 4	
Clerk, at £60 per annum .....	C	4	10 0 0	
Storeman, at £100 ditto .....	G	D	16 13 4	
Messenger, at £10 ditto (also Audit Department, £80).....	G	C	1 13 4	
			131 13 4	
CONTINGENCIES.				
Stationery, Stores, Conveyance, and Miscellaneous Expenses .....			8 0 0	
Postage, Telegrams and Telephones .....			9 0 0	
Printing for Department.....			5 0 0	
			22 0 0	
<i>Total Stores Department</i> .....			£153 13 4	



## Appropriation, 1905-6.

## Treasurer.

	CLASSIFICATION.		For 1904-5.	For 1905-6.
	Division.	Class.	Fixed Establishment.	Fixed Establishment.
<b>XXIX.—TREASURY.</b>				
<b>SALARIES.</b>				
1 Under Treasurer (also Permanent Head Commonwealth Sub-Treasury, £100).....	C	1A	£ 550 0 0	£ 550 0 0
2 Accountant (also Commonwealth Sub-Treasury, £75); also Secretary Public Debts Sinking Fund, £50 .....	C	1B	375 0 0	375 0 0
3 Receiver and Paymaster (also Commonwealth Sub-Treasury, £50).....	C	2	330 0 0	330 0 0
4 Cashier, Pay Branch .....	C	2	300 0 0	300 0 0
5 Cashier, Revenue Branch .....	C	2	270 0 0	270 0 0
6 Clerk .....	C	3	230 0 0	230 0 0
7 Clerk.....	C	3	190 0 0	190 0 0
8 Clerk.....	C	4	150 0 0	150 0 0
9 Clerk....	C	4	150 0 0	150 0 0
10 Clerk.....	C	4	120 0 0	120 0 0
11 Clerk .....	C	4	90 0 0	100 0 0
12 Clerk .....	C	4	85 0 0	95 0 0
13 Clerk .....	C	4	50 0 0	60 0 0
14 Clerk .....	C	4	50 0 0	60 0 0
15 Messenger .....	G	C	100 0 0	100 0 0
			3040 0 0	3080 0 0
<b>IMPERIAL PENSIONS BRANCH.</b>				
16 Paymaster .....	C	1B	300 0 0	300 0 0
			3340 0 0	3380 0 0
<b>CONTINGENCIES.</b>				
17 Stationery, Stores, and Miscellaneous Expenses			100 0 0	100 0 0
18 Printing .....			100 0 0	100 0 0
19 Postage, Telegrams, and Telephones.....			242 0 0	242 0 0
			442 0 0	442 0 0
<b>STORES BRANCH. (10 months only in 1904-5)</b>				
Salaries—				
20 Inspector of Stores and Secretary Board of Tenders, at £300 per annum .....	C	1B	250 0 0	300 0 0
21 Chief Clerk, at £190 per annum .....	C	3	158 6 8	190 0 0
22 Storekeeper (with Quarters, Fuel, and Light, say £30), at £130.....	C	4	108 6 8	130 0 0
23 Clerk, at £60 per annum .....	C	4	50 0 0	70 0 0
24 Storeman, at £100 per annum .....	G	D	83 6 8	100 0 0
25 Messenger (also Audit Department, £80), at £10 per annum .....	G	C	8 6 8	10 0 0
			658 6 8	800 0 0
Contingencies—				
26 Stationery, Stores, Conveyance, and Miscellaneous Expenses .....			62 0 0	60 0 0
27 Travelling Expenses .....			30 0 0	30 0 0
28 Postage, Telegrams, and Telephones.....			23 0 0	32 0 0
29 Printing for Department.....			25 0 0	30 0 0
			140 0 0	152 0 0
			798 6 8	952 0 0
<i>Total Treasurer, (including Stores)..</i>			£4580 6 8	£4774 0 0
<i>Estimated Revenue for Services .....</i>			..	500 0 0

## Appropriation, 1905-6

## TREASURER—continued.

	CLASSIFICATION.		For 1904-5.			For 1905-6.		
	Division.	Class.	Fixed Establishment.			Fixed Establishment.		
			£	s.	d.	£	s.	d.
<b>XXX.—OFFICE OF TAXES.</b>								
SALARIES.								
1 Commissioner and Collector .....	C	1A	400	0	0	400	0	0
2 District Deputy Commissioner, Launceston, also Deputy Sheriff, £100, and Registrar Court Requests, &c., £125 .....						200	0	0
3 Chief Clerk .....	C	2	250	0	0	250	0	0
4 Clerk .....	C	3	215	0	0	215	0	0
5 Clerk .....	C	3	215	0	0	215	0	0
6 Clerk .....	C	3	190	0	0	190	0	0
7 Clerk .....	C	3	180	0	0	180	0	0
8 Clerk .....	C	4	180	0	0	180	0	0
9 Clerk .....	C	3	170	0	0	170	0	0
10 Clerk .....	C	4	165	0	0	165	0	0
11 Clerk .....	C	4	160	0	0	160	0	0
12 Clerk .....			In Mines.			160	0	0
13 Clerk .....	C	3	140	0	0	140	0	0
14 Clerk .....	C	3	70	0	0	87	0	0
15 Messenger, also State Savings Bank, £45 .....	G	C	45	0	0	45	0	0
			2380	0	0	2757	0	0
CONTINGENCIES.								
16 Travelling Expenses .....			45	0	0	45	0	0
17 Stationery and Stores, Cost of Collection of Rates and Taxes, Advertising, &c. ....			100	0	0	150	0	0
18 Clerical Assistance (including overtime) and Expenses in connection with Preparation of New Assessment Rolls .....			650	0	0	800	0	0
19 Printing Valuation Rolls, &c. ....			365	0	0	500	0	0
20 Postage, Telegrams, and Telephones .....			600	0	0	800	0	0
			1760	0	0	2295	0	0
<i>Total Office of Taxes</i> .....			£4140	0	0	£5052	0	0
<b>XXXI.—PRINTING DEPARTMENT.</b>								
SALARIES.								
1 Government Printer .....	P	B1A	450	0	0	450	0	0
2 Overseer .....	G	B	250	0	0	250	0	0
3 Accountant .....	C	3	175	0	0	175	0	0
4 Clerk .....	C	4	70	0	0	80	0	0
5 Foreman .....	G	B	185	0	0	185	0	0
6 Foreman Machinist .....	G	B	164	0	0	164	0	0
7 Messenger .....	G	C	85	0	0	90	0	0
			1379	0	0	1394	0	0
8. Wages to Establishment .....			5750	0	0	5900	0	0
CONTINGENCIES.								
9 Repairs to Machinery, Presses, &c., and Petty Expenses, Stationery, Stores, Fuel and Light, New Type, Fittings, &c. ....			2700	0	0	2900	0	0
10 Postage, Telegrams, and Telephones .....			117	0	0	117	0	0
11 Printing .....			40	0	0	40	0	0
New Machinery .....			50	0	0	..	..	..
12 Plant for Printing .....			..	..	..	125	0	0
			2907	0	0	3182	0	0
<i>Total Printing Department</i> .....			10,036	0	0	10,476	0	0
<i>Estimated Revenue for Services</i> .....			..	..	..	12,000	0	0



## Appropriation, 1905-6.

## TREASURER—continued.

	CLASSIFICATION.		For 1904-5.	For 1905-6.
	Division.	Class.	Fixed Establishment.	Fixed Establishment.
			£ s. d.	£ s. d.
<b>XXXII.—STATE SAVINGS BANK.</b>				
<b>SALARIES.</b>				
1 Manager .....	C	3	215 0 0	215 0 0
2 Clerk .....	C	4	175 0 0	175 0 0
3 Clerk .....	C	4	120 0 0	120 0 0
4 Clerk .....	..	4	115 0 0	120 0 0
5 Clerk .....	..	4	50 0 0	60 0 0
6 Clerk .....	..		40 0 0	55 0 0
7 Secretary to Trustees . . . . .	..	C	20 0 0	20 0 0
8 Messenger—also Office of Taxes, £45.....	G		45 0 0	45 0 0
			780 0 0	810 0 0
<b>CONTINGENCIES.</b>				
9 Stationery, Printing, and Sundries.....			180 0 0	165 0 0
10 Commission to Postal Department on Country Business .....			960 0 0	800 0 0
11 Postage, Telegrams and Telephones.....			156 0 0	160 0 0
12 Expenses opening new Ledgers and calculating Interest .....			..	50 0 0
			1296 0 0	1175 0 0
<i>Total State Savings Bank .....</i>			£2076 0 0	1985 0 0
<i>Estimated Reimbursement of Expenses of working.</i>			..	900 0 0

## Appropriation, 1905-6

## TREASURER—continued.

XXXIII.—Interest.	Rate per cent.	For 1904-5.			For 1905-6.		
		£	s.	d.	£	s.	d.
On Debentures issued under Act 34 Vict.							
No. 10 .....	4 & 5	161	0	0	78	0	0
Ditto 41 Vict. No. 3 .....	4	12,000	0	0	12,000	0	0
Ditto 44 Vict. No. 34 .....	..	12,000	0	0	12,000	0	0
Ditto 45 Vict. No. 38 .....	..	260	0	0	..	..	..
Ditto 46 Vict. No. 45 .....	3½ & 4	21,863	0	0	21,863	0	0
Ditto 47 Vict. No. 47 .....	4	32,000	0	0	32,000	0	0
Ditto 49 Vict. No. 54 .....	..	40,000	0	0	40,000	0	0
Ditto 56 Vict. No. 53 .....	4	2704	0	0	2704	0	0
On Inscribed Stock for purposes of Act 52							
Vict. No. 68 .....	3½	35,000	0	0	35,000	0	0
Ditto ditto Main Line Railway Purchase Act, 54 Vict. No. 1 .....	3½	38,728	0	0	38,728	0	0
Ditto 55 Vict. No. 82 .....	3½	21,000	0	0	21,000	0	0
Ditto, 55 Vict. No. 82, & 56 Vict. No. 56	4	40,000	0	0	40,000	0	0
Ditto 58 Vict. No. 40 .....	3½	26,250	0	0	26,250	0	0
Ditto 64 Vict. No. 14 .....	3	13,500	0	0	13,500	0	0
Ditto 3 Edw. VII. No. 26 and 4 Edw. 7 No. 29 .....	3½	..	..	..	3500	0	0
		295,466	0	0	298,623	0	0
On Local Inscribed Stock, 59 Vict. No. 6 ..	3½	1563	0	0	378	0	0
Ditto, ditto, 60 Vict. No. 15 .....	3	1856	0	0	928	0	0
Ditto, ditto, 61 Vict. No. 3 .....	3	1646	0	0	822	0	0
Ditto, ditto, 62 Vict. No. 52 .....	3	1102	0	0	1055	0	0
Ditto, ditto, 54 Vict. No. 8 and 62 Vict. No. 38 .....	3	1800	0	0	1800	0	0
Ditto, ditto, 63 Vict. No. 29 .....	3	179	0	0	179	0	0
Ditto, ditto, 63 Vict. No. 49 .....	3	2484	0	0	2400	0	0
Ditto, ditto, 64 Vict. No. 14 .....	3, 3¼ & 3½	7779	0	0	7779	0	0
Ditto, ditto, 64 Vict. No. 75 .....	3¼ & 3½	17,486	0	0	17,416	0	0
Ditto, ditto, 1 Edw. VII. No. 52 .....	3¼, 3½ & 4	7962	0	0	7890	0	0
Ditto, ditto, 2 Edw. VII. No. 39 .....	3½ & 4	1700	0	0	1706	0	0
Ditto, ditto, 3 Edw. VII. No. 26 .....	..	3300	0	0	1904	0	0
Ditto, ditto, 4 Edw. VII. Nos. 29 and 30	3½	..	..	..	2107	0	0
Treasury Bills, 1 Edw. VII. No. 51 .....	3½	3500	0	0	340	0	0
Ditto, ditto, 2 Edw. VII. No. 38 .....	3½ & 4	4760	0	0	4636	0	0
Ditto, ditto, 4 Edw. VII. No. 31 .....	3½	..	..	..	2439	0	0
		57,117	0	0	53,779	0	0
<i>Total Interest as reserved by Law</i> .....		352,583	0	0	352,402	0	0
<i>Estimated Revenue to be received for Interest on Public Account, and from Local Bodies, &amp;c</i> ..		..	..	..	14,000	0	0
XXXIV.—SINKING FUNDS.							
1 Mount Cameron Water-race, Moiety of Rentals ..		32	0	0	32	0	0
2 Expenses in connection with Public Debts Sinking Fund .....		50	0	0	50	0	0
3 Interest on Sinking Funds under Local Public Works Loans Act, &c .....		600	0	0	700	0	0
4 Contribution to Sinking Fund under Strahan Marine Board Act, 62 Vict. No. 54 .....		4000	0	0	4000	0	0
5 Reserves under Crown and Waste Lands Acts to redeem Loans .....		23,000	0	0	19,500	0	0
6 Contribution to be paid to Public Debts Sinking Fund for Redemption of Loans for Public Works—							
Under Act, 1 Ed. 7 No. 49 .....		1180	0	0	1180	0	0
Ditto, 2 Ed. 7 No. 43 .....		612	0	0	630	0	0
Ditto, 3 Ed. 7 No. 27 .....		495	0	0	495	0	0
Ditto, 4 Ed. 7 No. 29 .....		..	..	..	342	0	0
7 Contribution to Sinking Fund for redemption of Loan for renewal of Bridges and Jetties and interest thereon .....		..	..	..	850	0	0
Reserved by Law .....		£24,222	0	0	29,969	0	0
To be voted .....		3547	0	0	£27,779	0	0
		£27,779	0	0			

## Appropriation, 1905-6.

## TREASURER—continued.

	CLASSIFI- CATION.		For 1904-5.	For 1905-6.
	Division.	Class.	Fixed Establishment.	Fixed Establishment.
			£ s. d.	£ s. d.
<b>XXXV.—MISCELLANEOUS.</b>				
1				
Commission and Charges for payment of Principal and Interest on Inscribed Stock, Debentures, and Treasury Bills in London .....			2100 0 0	2200 0 0
2			1200 0 0	600 0 0
2 Premiums of Exchange upon Remittances .....				
3				
3 For payment of Premiums on Guarantee Policies for Officers entrusted with collection of Government moneys .....			120 0 0	80 0 0
4				
4 "The Merchant Ships Officers Examination Act," expenses, &c.....			60 0 0	60 0 0
5				
5 Gratuity to Mr. Frank Long, the discoverer of Silver on the West Coast, to be applied in such manner as the Treasurer may think fit ..			50 0 0	50 0 0
<i>Total Miscellaneous .....</i>			<b>£3530 0 0</b>	<b>£2990 0 0</b>

## Appropriation, 1905-6.

## Attorney-General.

		CLASSIFI- CATION.	For 1904-5.	For 1905-6.	
		Division.	Fixed Establishment.	Fixed Establishment.	
		Class.	£ s. d.	£ s. d.	
<b>Judicial Departments.</b>					
<b>XXXVI.—ATTORNEY-GENERAL.</b>					
SALARIES.					
1	Secretary to Law Department; also Secretary to Board of Examiners under Legal Practitioners Act, £2 2s. . . . .	C	1A	200 0 0	200 0 0
	Parliamentary Draftsman . . . . .			270 0 0	See XXXVII.
2	Clerk to Attorney-General and Law Department	C	4	105 0 0	120 0 0
3	Messenger, with Quarters, Fuel, & Light, say £25	G	C	100 0 0	100 0 0
			675 0 0	420 0 0	
CONTINGENCIES.					
4	Travelling Expenses of Law Officers . . . . .			50 0 0	50 0 0
5	Stationery and Stores, Incidental Expenses, Clerical Assistance, Defending Pauper Prisoners, Law Books, Binding, Newspapers, Advertising . . . . .			100 0 0	100 0 0
6	Printing . . . . .			80 0 0	80 0 0
7	Postage, Telegrams, and Telephones . . . . .			37 0 0	37 0 0
			267 0 0	267 0 0	
<i>Total Attorney-General's Department . . . .</i>			£942 0 0	£687 0 0	
<b>XXXVII.—PARLIAMENTARY DRAFTSMAN.</b>					
SALARY.					
1	Parliamentary Draftsman . . . . .	P	1A	See XXXVI.	300 0 0
<b>XXXVIII.—SOLICITOR-GENERAL.</b>					
SALARIES.					
1	Solicitor-General and Crown Solicitor . . . . .	P	B1A	600 0 0	600 0 0
2	Conveyancing Solicitor, Assistant Crown Prosecutor, Clerk of the Peace, and Registrar of Building Societies . . . . .	P	B2	300 0 0	300 0 0
	Acting Conveyancing Solicitor for months July to December, 1904, at £250 . . . . .			125 0 0	..
3	Clerk . . . . .	C	3	200 0 0	200 0 0
4	Junior Clerk . . . . .	C	4	70 0 0	80 0 0
5	Messenger; also Supreme Court, £48 . . . . .	G	C	48 0 0	48 0 0
			1343 0 0	1228 0 0	
CONTINGENCIES.					
6	Stationery and Stores, Clerical and other Assistance . . . . .			19 0 0	19 0 0
7	Printing . . . . .			20 0 0	20 0 0
8	Postage, Telegrams, and Telephones . . . . .			31 0 0	31 0 0
			70 0 0	70 0 0	
<i>Total Solicitor-General's Department . .</i>			£1413 0 0	£1298 0 0	
<i>Estimated Revenue for Services rendered</i>			..	650 0 0	
Reserved by Law . . . . .			£450 0 0		
To be voted . . . . .			848 0 0		
			£1298 0 0		



## Appropriation, 1905-6.

## ATTORNEY-GENERAL—continued.

	CLASSIFICATION.		For 1904-5.	For 1905-6.
	Division.	Class.	Fixed Establishment.	Fixed Establishment.
			£ s. d.	£ s. d.
<b>XLI.—LANDS' TITLES.</b>				
<i>Hobart.</i> <b>SALARIES.</b>				
1 Recorder of Titles, Collector of Stamp Duties, and Registrar of Public Trusts .....	P	1A	600 0 0	600 0 0
2 Solicitor to Lands' Titles Commissioner .....	P	3	210 0 0	210 0 0
3 Deputy Recorder of Titles, Chief Clerk, and Draftsman .....	C	1B	365 0 0	365 0 0
4 Clerk and Draftsman .....	C	3	220 0 0	220 0 0
5 Clerk and Accountant .....	C	3	200 0 0	200 0 0
6 Engrossing Clerk .....	C	3	190 0 0	190 0 0
7 Clerk (indexing) .....	C	3	160 0 0	160 0 0
8 Clerk and Draftsman .....	C	4	160 0 0	160 0 0
9 Clerk .....	C	4	150 0 0	150 0 0
10 Clerk and Junior Draftsman .....	C	4	110 0 0	115 0 0
11 Clerk .....	C	4	100 0 0	105 0 0
12 Clerk .....	C	4	85 0 0	70 0 0
13 Junior Clerk .....	C	Pr.	31 9 0	45 0 0
14 Messenger .....	G	C	110 0 0	110 0 0
<b>CONTINGENCIES.</b>			2691 9 0	2700 0 0
15 Stationery and Stores, Advertising, and Miscellaneous—including Travelling Expenses .....			280 0 0	280 0 0
16 Fees for Inspection of Surveys .....			20 0 0	20 0 0
17 Printing .....			80 0 0	80 0 0
18 Postage, Telegrams, and Telephones .....			131 0 0	100 0 0
			511 0 0	480 0 0
<i>Total Lands' Titles Department</i> .....			£3202 9 0	£3180 0 0
<i>Estimated Revenue for services</i> .....			..	4500 0 0
<b>XLII.—SHERIFF, COURT OF REQUESTS, &amp;c.</b>				
<i>Hobart.</i> <b>SALARIES.</b>				
1 Sheriff, Curator of Intestate Estates, Clerk of Supreme Court, Registrar of Supreme Court in Bankruptcy and Local Courts Act Jurisdiction, Deputy Registrar of Deeds, and Collector of Stamp Duties .....	C	1A	375 0 0	375 0 0
2 Clerk .....	C	3	210 0 0	210 0 0
3 Registrar of Court of Requests .....	G	D	180 0 0	180 0 0
4 Bailiff of Court of Requests and Sheriff's Officer .....	G	D	165 0 0	165 0 0
5 Court House Keeper .....	G	C	125 0 0	125 0 0
6 Crier of the Court .....	G	D	85 0 0	85 0 0
7 Summoning Officer, Supreme Court, also Constable .....			10 0 0	10 0 0
<i>Carried forward</i> .....			1150 0 0	1150 0 0

## Appropriation, 1905-6.

## ATTORNEY-GENERAL—continued.

	CLASSIFICATION.		For 1904-5.	For 1905-6.
	Division.	Class.	Fixed Establishment.	Fixed Establishment.
			£ s. d.	£ s. d.
<b>SHERIFF, COURT OF REQUESTS, &amp;c.—</b>				
<i>continued.</i>				
<i>Brought forward.....</i>				
			1150 0 0	1150 0 0
<b>Launceston.</b>				
8 Deputy Sheriff—also Registrar Court of Requests, &c., £125 (£225 in 1904-5), and Deputy-Commissioner of Taxes, £200.....	G	D	200 0 0	100 0 0
9 Bailiff and Clerk, and Bailiff of Court of Requests .....	G	D	160 0 0	160 0 0
10 Court House Keeper—also Crier of the Courts, with quarters, fuel, and light, say £30 .....			130 0 0	90 0 0
			490 0 0	350 0 0
<b>ALLOWANCES.</b>				
11 Court House Keeper and Messenger, Hobart—House Allowance .....			25 0 0	25 0 0
<b>CONTINGENCIES.</b>				
12 Stationery, Stores, Incidental and Unforeseen Expenses .....			57 0 0	57 0 0
13 Travelling Expenses of Sheriff and Officers ....			30 0 0	30 0 0
14 Printing .....			45 0 0	45 0 0
15 Postage, Telegrams, and Telephones.....			54 0 0	54 0 0
			186 0 0	186 0 0
<i>Total Sheriff's Department..</i>			£1851 0 0	£1711 0 0
<i>Estimated Revenue for Services .....</i>			..	400 0 0
<b>XLIII.—ADMINISTRATION OF JUSTICE.</b>				
1 Crown Witnesses' Expenses on Criminal Trials..			750 0 0	500 0 0
2 Prisoners' Witnesses' Expenses on Criminal Trials			25 0 0	25 0 0
3 Jurors' Expenses in Civil and Criminal Cases..			500 0 0	400 0 0
4 Incidental Expenses of Jurors .....			15 0 0	15 0 0
<i>Total Administration of Justice..</i>			1290 0 0	940 0 0

Appropriation, 1905-6.

## ATTORNEY-GENERAL—continued.

	CLASSIFICATION.		For 1904-5.	For 1905-6.				
	Division.	Class.	Fixed Establishment.					
			£	s.	d.	£	s.	d.
<b>XLIV.—COURTS OF REQUESTS AND COURT OF BANKRUPTCY, LAUNCESTON.</b>								
<b>SALARIES.</b>								
1 Commissioner of Courts of Requests, and Police Magistrate, Launceston and North-Eastern Division; also Commissioner of Mines £150	P	A1A	400	0	0	400	0	0
2 Registrar of Courts of Requests and Bankruptcy, Registrar of Supreme Court in its Local Courts Act Jurisdiction, Clerk of the Peace, and Collector Stamp Duties; also Deputy Sheriff, Launceston, £100 (£200 in 1904-5), and Deputy Commissioner of Taxes, £200	C	3	225	0	0	125	0	0
3 Clerk (also Superintendent Invalid Depot), with quarters, fuel, and light, say £52	C	3	160	0	0	160	0	0
4 Messenger	G	C	90	0	0	..	..	..
5 Office Cleaner	G	C	20	0	0	20	0	0
			895	0	0	705	0	0
<b>CONTINGENCIES.</b>								
6 Stationery, Stores, and Law Books			25	0	0	25	0	0
7 Travelling Expenses of Commissioner			75	0	0	75	0	0
8 Postage, Telegrams, and Telephones			31	0	0	31	0	0
9 Printing £15; Miscellaneous, £10			25	0	0	25	0	0
			156	0	0	156	0	0
<i>Total General Sessions, Court of Requests and Court of Bankruptcy, Launceston...</i>			£1051	0	0	£861	0	0
<b>TOTAL JUDICIAL DEPARTMENTS..</b>			<b>£15,906</b>	<b>15</b>	<b>8</b>	<b>£15,325</b>	<b>0</b>	<b>0</b>
Reserved by Law, Judicial Departments			£4350	0	0			
To be voted			£10,975	0	0			
			£15,325	0	0			



## Appropriation, 1905-6.

ATTORNEY-GENERAL—*continued.*

	CLASSIFICATION.		For 1904-5.	For 1905-6.
	Division.	Class.	Fixed Establishment.	
			£	s. d.
<b>Magistracy and Courts of Requests.</b>				
XLV.—SOUTHERN DIVISION.				
SALARIES.				
1 Police Magistrate and Commissioner Court of Requests, Hobart, and Southern Division; also Commissioner of Lands' Titles, £12 .....	P	B1A	400	0 0
2 Bench Clerk, and Clerk Petty Sessions; also Returning Officer, say £10 .....	C	3	230	0 0
3 Information Clerk (£100 from 1 September, 1904)	C	4	83	6 8
4 Police Clerk; also Clerk of Petty Sessions, Deputy Clerk of the Peace and Registrar Courts of Requests at Franklin, Huonville, Geeveston, and Dover; also Secretary Board of Advice, £15; and Clerical Assistance, Local Authority, £12 .....	C	4	140	0 0
5 Registrar, Lovett; also Senior Constable, £96; Secretary Board of Advice, £10, and Secretary Local Board of Health .....	C	5x	25	0 0
6 Clerk Petty Sessions and Registrar, Kingston; also Constable, &c. ....	C	5x	15	0 0
7 Clerk Petty Sessions and Registrar, Woodbridge; also Special Constable, &c. ....	C	5x	10	0 0
8 Registrar, Bailiff, and Clerk Petty Sessions, Premaydena .....	C	5x	27	0 0
9 Messenger .....			96	0 0
			1026	6 8
			1053	0 0
CONTINGENCIES.				
10 Stationery, Stores, Fuel and Light, Cleaning, Sanitary Service, Miscellaneous, and Rent of Court House, Geeveston .....			75	0 0
11 Travelling Expenses, Police Magistrate and Commissioner, Police Clerk, &c. ....			50	0 0
Travelling Expenses, Police Clerk and Registrar Courts of Requests at Franklin, Huonville, Geeveston, and Dover .....			25	0 0
12 Postage, Telegraphs, and Telephones .....			64	0 0
13 Printing .....			15	0 0
			229	0 0
			229	0 0
<i>Total Southern Division.. ...</i>			£1255	6 8
			£1282	0 0

## Appropriation, 1905-6.

## ATTORNEY-GENERAL—continued.

	CLASSIFI- CATION.		For 1904-5.			For 1905-6.		
	Division.	Class.	Fixed Establishment.			Fixed Establishment.		
			£	s.	d.	£	s.	d.
<b>XLVI.—NORTHERN DIVISION.</b>								
SALARIES.								
1	P	A1A						
Police Magistrate; also Commissioner Court of Requests, Launceston, Northern and North-Eastern Districts, £400, and Commissioner of Mines, £150 .....								
2	C	3	240	0	0	240	0	0
Bench Clerk .....								
3	C	4	80	0	0	90	0	0
Clerk .....								
4	G	C	130	0	0	130	0	0
Messenger .....								
			450	0	0	460	0	0
CONTINGENCIES.								
5			20	0	0	20	0	0
Stationery, Stores, Fuel, and Light .....								
6			9	0	0	9	0	0
Postage and Telegrams .....								
7			5	0	0	5	0	0
Printing .....								
			34	0	0	34	0	0
<i>Total Northern Division</i> .....			£484	0	0	£494	0	0
<b>XLVII.—NORTH-EASTERN DIVISION.</b>								
SALARIES.								
1	C	3	135	0	0	130	0	0
Police Clerk, Registrar Court of Requests, and Deputy Clerk of Peace, Scottsdale (also Registrar of Mines, £65, in 1904-5) .....								
2	C	5x	38	0	0	38	0	0
Registrar Court of Requests and Bailiff, Derby—also Constable, £96, and Electoral Registrar .....								
3	C	5x	35	0	0	35	0	0
Police Clerk and Registrar Court of Requests, Beaconsfield—also Constable, £96 .....								
4	C	4	75	0	0	75	0	0
Police Clerk, Registrar Court of Requests and Deputy Clerk of Peace, St. Helens—also Registrar of Mines, £45 .....								
5	C	5x	24	0	0	24	0	0
Registrar Court of General Sessions and Deputy Clerk of Peace, Ringarooma—also Constable, £96 .....								
6						15	0	0
Registrar Court of Requests, and Police Clerk, George Town; also Constable, £96 .....								
			307	0	0	317	0	0
CONTINGENCIES.								
7			56	0	0	48	0	0
Stationery and Stores, Fuel and Light, Cleansing Court Houses and Offices, and Miscellaneous .....								
8			40	0	0	50	0	0
Postage and Telegrams .....								
9			5	0	0	5	0	0
Printing .....								
			101	0	0	103	0	0
<i>Total North-Eastern Division</i> .....			£408	0	0	£420	0	0

## Appropriation, 1905-6.

## ATTORNEY-GENERAL—continued.

	CLASSIFICATION.		For 1904-5.			For 1905-6.		
	Division.	Class.	Fixed Establishment			Fixed Establishment.		
			£	s.	d.	£	s.	d.
<b>NORTH-WESTERN DIVISION.</b>								
<b>XLVIII.—DISTRICT OF EAST DEVON.</b>								
<b>SALARIES.</b>								
1 Police Magistrate, and Commissioner of Court of Requests, North-Western Division; also Returning Officer, say £17, and Coroner . . . . .	P	A1A	400	0	0	400	0	0
2 Police Clerk, Registrar Courts of Requests, General Sessions, and Supreme Court, Latrobe —also Secretary Board of Advice, £10, and Clerical Assistance Local Authority, say £15 . . . . .	C	3	165	0	0	165	0	0
3 Police Clerk, Registrar Courts of Requests, General Sessions, and Supreme Court, Devonport, also Secretary Board of Advice, £10; Returning Officer, say £15, and Clerical Assistance Local Authority, say £15 . . . . .	C	3	168	0	0	168	0	0
4 Registrar, Sheffield, also Sub-Inspector of Police, £130 . . . . .	C	5x	25	0	0	25	0	0
			<b>758 0 0</b>			<b>758 0 0</b>		
<b>ALLOWANCES.</b>								
5 Police Clerk, Devonport, in lieu of Quarters . . . . .			25	0	0	25	0	0
<b>CONTINGENCIES.</b>								
6 Travelling Expenses, Police Magistrate and Commissioner . . . . .			65	0	0	65	0	0
7 Stationery & Stores; Fuel & Light; Cleansing; Water Rate, Latrobe, and Miscellaneous . . . . .			47	0	0	47	0	0
8 Postage, Telegrams, and Telephone . . . . .			40	0	0	40	0	0
9 Printing . . . . .			5	0	0	5	0	0
			<b>157 0 0</b>			<b>157 0 0</b>		
<b>Total District of East Devon . . . . .</b>			<b>£940 0 0</b>			<b>£940 0 0</b>		
<b>XLIX.—DISTRICT OF EMU BAY, WEST DEVON, AND RUSSELL.</b>								
<b>SALARIES.</b>								
1 Police Clerk and Registrar Court of Requests, Burnie, also Registrar Births, £30; Clerical Assistance, Local Authority, £8, and Sub-Inspector of Police, £70 . . . . .	C	4	70	0	0	70	0	0
2 Registrar Court of Requests, Waratah; also Constable, £96, and Registrar of Mines, £15 . . . . .	C	5x	16	0	0	16	0	0
3 Registrar Court of Requests, Wynyard; also Sergeant of Police, £116 . . . . .	C	5x	22	0	0	22	0	0
4 Police Clerk and Registrar, Court of Requests, Ulverstone; also Sub-Collector of Customs, £80, and Registrar, Births, &c., say, £30 . . . . .	C	4	108	0	0	108	0	0
5 Registrar, Court of Requests, Penguin; also Constable, £96 . . . . .	C	5x	10	0	0	10	0	0
6 Registrar Court of Requests, Stanley; also Sub-Inspector of Police, £150 . . . . .	C	5x	15	0	0	15	0	0
7 Police Clerk, Registrar and Bailiff General Sessions, King Island; also Special Constable, £25 . . . . .	C	5x	25	0	0	25	0	0
<b>Carried forward . . . . .</b>			<b>266 0 0</b>			<b>266 0 0</b>		

## Appropriation, 1905-6.

## ATTORNEY-GENERAL—continued.

	CLASSIFICATION.		For 1904-5.			For 1905-6.		
	Division.	Class.	Fixed Establishment.			Fixed Establishment.		
			£	s.	d.	£	s.	d.
<b>DISTRICT OF EMU BAY, WEST DEVON, AND RUSSELL—continued.</b>								
<i>Brought forward</i> .....								
CONTINGENCIES.								
8			50	0	0	50	0	0
Stationery and Stores, Fuel and Light; Rent of Court House, Penguin; Rent of Town Hall, King Island; Cleansing and Miscellaneous...			28	0	0	28	0	0
9			5	0	0	5	0	0
Postage and Telegrams .....								
10								
Printing .....			83	0	0	83	0	0
<i>Total Districts of Emu Bay, West Devon, and Russell</i> .....			£349	0	0	£349	0	0
<i>Total North-Western Division</i> .....			1289	0	0	£1289	0	0
<b>L.—WESTERN DIVISION.</b>								
<b>DISTRICT OF MACQUARIE.</b>								
1	P	A 1A	270	0	0	297	10	0
Police Magistrate and Commissioner of Courts of Requests, Zeehan, Queenstown, Gormanston, and Strahan; also Commissioner of Mines, £100; Commonwealth Divisional Returning Officer, £26; Coroner and Collector of Stamp Duties (with Quarters, say £30, in 1904-5) .....								
2	C	2	120	0	0	120	0	0
Police Clerk, Deputy Clerk of the Peace, and Registrar Court of Requests, Zeehan; also Registrar of Mines, £100; Registrar of Births, say £35; and Returning Officer ....								
3	C	3	100	0	0	100	0	0
Police Clerk, Deputy Clerk of the Peace, and Registrar of the Court of Requests, Queenstown; also Registrar of Mines, £75; and Registrar of Births, say £30; also Coroner and Returning Officer .....								
4	C	5X	10	0	0	10	0	0
Police Clerk, Deputy Clerk of Peace, and Registrar Court of Requests, Strahan; also Police Constable .....								
5	G	D	130	0	0	130	0	0
Bailiff, Court of Requests, Queenstown, also Sanitary Inspector, Town Board, £40 .....								
CONTINGENCIES.			630	0	0	657	10	0
6			120	0	0	80	0	0
Travelling Expenses of Police Magistrate and Commissioner .....								
7			85	0	0	85	0	0
Miscellaneous, Cleaning, Sanitary Service, Stationery and Stores, Fuel and Light .....								
8			51	0	0	50	0	0
Postage, Telegrams, and Telephones .....								
9			5	0	0	15	0	0
Printing .....								
10			15	0	0			
Law Books for Commissioner's Office .....								
<i>Total Western Division</i> .....			£906	0	0	£887	10	0
<b>LI.—COURTS OF REQUESTS GENERALLY.</b>								
1			25	0	0	25	0	0
Stationery and Stores for the use of Courts of Requests and of General Sessions throughout the State .....								
2			140	0	0	140	0	0
Remuneration to Registrars in lieu of Fees directed by "The Local Courts Act, 1896," to be paid into the Consolidated Revenue Fund .....								
<i>Total Courts of Requests</i> .....			165	0	0	165	0	0
<b>TOTAL MAGISTRACY AND COURTS OF REQUESTS</b>			£4507	6	8	£4537	10	0

## Appropriation, 1905-6.

## ATTORNEY-GENERAL—continued.

	CLASSIFICATION.		For 1904-5.			For 1905-6.		
	Division.	Class.	Fixed Establishment.			Fixed Establishment.		
<b>LII.—POLICE DEPARTMENT.</b>								
<b>SALARIES.</b>								
1 Commissioner of Police (also Inspector of Charities)—with House Allowance, £50 . . . .			£	s.	d.	£	s.	d.
2 Accountant (also Secretary Provident Fund, £50)	C	2	500	0	0	500	0	0
3 Chief Clerk, also Supervisor of Totalisators, say, £25 . . . . .	C	3	210	0	0	210	0	0
4 Junior Clerk . . . . .	C	4	195	0	0	195	0	0
Medical Officer, Hobart . . . . .			90	0	0	100	0	0
5 Secretary Police Provident Fund (also Accountant)			25	0	0	..	50	0
			1020	0	0	1055	0	0
Relieving Superintendent—Quarters, £39 . . . .			200	0	0	In Item 6		
6 Superintendents, with Quarters or House Allowances . . . . .			1920	0	0	1930	0	0
7 Sub-Inspectors, with Quarters or House Allowances . . . . .			3007	10	0	2900	0	0
8 Sergeants, with Quarters or House Allowances			2088	0	0	1740	0	0
9 Acting Sergeants and Constables, with Quarters or House Allowances . . . . .			16,541	0	0	15,975	0	0
10 Special Constables . . . . .			237	0	0	371	0	0
11 Increase pay for long service . . . . .			1000	0	0	1000	0	0
12 Detectives—Sub-Inspector, £150; Sergeant, £116; 3 Constables, £288 . . . . .			..			554	0	0
			24,993	10	0	24,470	0	0
<b>ALLOWANCES.</b>								
13 Horse and Bicycle Allowances . . . . .			2040	0	0	1920	0	0
14 House Allowances and Rent of Quarters . . . .			1710	0	0	1700	0	0
15 Personal Allowances for special work . . . . .			280	0	0	240	0	0
Expenses Police Provident Fund . . . . .			50	0	0	See Item 5		
16 Personal Allowances to continue to certain Police Officers the same rate of pay as they received prior to adoption of maximum rate of Salary for each grade . . . . .			766	0	0	707	0	0
			4846	0	0	4567	0	0
<b>CONTINGENCIES.</b>								
17 Stationery and Stores . . . . .			100	0	0	100	0	0
18 Uniforms . . . . .			1100	0	0	1100	0	0
19 Fuel and Light, Head Office and Station . . . .			130	0	0	125	0	0
20 Travelling Expenses, Expenses of Inspection, and Conveyance of Police on Railways and Tramways . . . . .			1400	0	0	1750	0	0
Conveyance of Police on Government Railways			350	0	0	..		
21 Construction and Repair of Buildings and Furniture . . . . .			800	0	0	800	0	0
22 Provisions, Bedding, Utensils, &c. for Prisoners			200	0	0	200	0	0
23 Contribution to Reward Branch of the Police Provident Fund under 62 Vict. No. 48, Section 44, for the year ending 31st December, 1905			*500	0	0	500	0	0
24 Printing . . . . .			230	0	0	200	0	0
25 Supervision of Totalisators . . . . .			90	0	0	100	0	0
26 Miscellaneous Expenses, including Medical Attendance and Medicine, extra Constables, Purchase, &c., Boats, Newspapers and Books, Ferry, Mersey, Pay of Female Searcher, Office Cleaner, and Drill Instructors, Sanitary Service . . . . .			300	0	0	300	0	0
27 Postage, Telegrams, Telephones, and Stamps . .			400	0	0	460	0	0
			5660	0	0	5635	0	0
<b>Total Police Department . . . . .</b>			<b>36,519</b>	<b>10</b>	<b>0</b>	<b>35,727</b>	<b>0</b>	<b>0</b>

For the year ending 31 December, 1904.

Appropriation, 1905-6.

## ATTORNEY-GENERAL—continued.

	CLASSIFICATION.		For 1904-5.			For 1905-6.		
	Division.	Class.	Fixed Establishment.			Fixed Establishment.		
			£	s.	d.	£	s.	d.
<b>Gaols.</b>								
<b>LIII.—GAOL, HOBART.</b>								
SALARIES.								
1 Governor of the Gaol (Quarters, Fuel, and Light, £80) .....	C		300	0	0	300	0	0
2 Deputy Gaoler (Quarters, Fuel, and Light, £40*) .....	G	A3	150	0	0	150	0	0
3 Clerk and Storekeeper* .....	C	3	200	0	0	200	0	0
4 Clerk* .....	C	4	150	0	0	150	0	0
5 Overseer of Shoemakers* .....	G	A4	121	0	0	121	0	0
6 Overseer of Mechanics* .....	G	A4	121	0	0	121	0	0
7 Chief Warder (Quarters, Fuel, and Light, £30*) .....			110	0	0	110	0	0
8 Eight Warders (1st Class) at £110* .....			880	0	0	880	0	0
9 Four Warders (2nd Class) at £96* .....			384	0	0	384	0	0
10 Five Warders (3rd Class) at £84 .....	G	C	420	0	0	420	0	0
11 Two Female Warders—One at £50, and one at £40 (Quarters, £15)* .....			90	0	0	90	0	0
12 Messenger* .....			84	0	0	84	0	0
			<b>3010</b>	<b>0</b>	<b>0</b>	<b>3010</b>	<b>0</b>	<b>0</b>
CONTINGENCIES.								
13 Clothing, Bedding, Stores, and Stationery, Uniforms, Provisions, Medical Comforts, Fuel and Light, Miscellaneous .....			1800	0	0	1800	0	0
14 Postage, Telegrams, and Telephones .....			16	0	0	16	0	0
15 Printing .....			5	0	0	5	0	0
			<b>1821</b>	<b>0</b>	<b>0</b>	<b>1821</b>	<b>0</b>	<b>0</b>
<i>Total Gaol, &amp;c., Hobart</i> .....			<b>£4831</b>	<b>0</b>	<b>0</b>	<b>£4831</b>	<b>0</b>	<b>0</b>
* Ration, estimated value £12.								
<i>Estimated Revenue for Services</i> .....						<b>300</b>	<b>0</b>	<b>0</b>
<b>LIV.—GAOL, LAUNCESTON.</b>								
SALARIES.								
1 Superintendent—also Superintendent of Police, Launceston, Selby, and George Town, £250, and Inspector C.D. Hospital, £15, with Quarters, &c., £45 .....			10	0	0	10	0	0
2 Senior Warder and Clerk—with Quarters, Fuel, Light, and Ration, £25 .....	G	c	110	0	0	110	0	0
3 Warder—with Quarters, &c., £25 .....	G	c	70	0	0	70	0	0
4 Warder—with Allowance, £15, and Rations, £10 .....	G	c	70	0	0	70	0	0
5 Female Warder—also Matron Launceston Invalid Depôt, £40, with Fuel, Light, Water, Ration, and Quarters, £25 .....	G	c	45	0	0	45	0	0
			<b>305</b>	<b>0</b>	<b>0</b>	<b>305</b>	<b>0</b>	<b>0</b>
ALLOWANCES.								
6 Warder—in lieu of Quarters .....			15	0	0	15	0	0
CONTINGENCIES.								
7 Provisions, Medical Comforts, Stores, Clothing, Bedding, Stationery, Miscellaneous, Medical Attendance and Medicines, Conveyance of Stores, Fuel, Light, and Water .....			307	0	0	307	0	0
8 Postage, Telegrams, and Telephones .....			11	0	0	11	0	0
9 Printing .....			2	0	0	2	0	0
			<b>320</b>	<b>0</b>	<b>0</b>	<b>320</b>	<b>0</b>	<b>0</b>
<i>Total Gaol, Launceston</i> .....			<b>£640</b>	<b>0</b>	<b>0</b>	<b>£640</b>	<b>0</b>	<b>0</b>
<b>LV.—GAOLS—GENERAL SERVICE.</b>								
1 { Escort of Prisoners and transport of discharged Prisoners, Alterations and Repairs, Earnings of Prisoners, Expenses in connection with Finger-print System .....			550	0	0	500	0	0
			<b>550</b>	<b>0</b>	<b>0</b>	<b>500</b>	<b>0</b>	<b>0</b>
<b>TOTAL GAOLS</b> .....			<b>£6021</b>	<b>0</b>	<b>0</b>	<b>£5971</b>	<b>0</b>	<b>0</b>

## Appropriation, 1905-6.

## Minister of Lands and Works.

	CLASSIFICATION.		For 1904-5.			For 1905-6.		
	Division.	Class.	Fixed Establishment.			Fixed Establishment.		
			£	s.	d.	£	s.	d.
<b>Lands, Works, Mines, Agricultural, and Railway Departments.</b>								
<b>LVI.—DEPARTMENT OF LANDS AND SURVEYS.</b>								
<b>SALARIES.</b>								
1 Commissioner of Crown Lands—the Minister . . .								
2 Surveyor-General and Secretary for Lands . . . .	P	B1A	550	0	0	550	0	0
<b>CLERICAL STAFF.</b>								
3 Chief Clerk, also Secretary Board Examiners, £10	C	2	345	0	0	345	0	0
4 Clerk and Accountant . . . . .	C	3	230	0	0	230	0	0
5 Clerk . . . . .	C	3	215	0	0	215	0	0
6 Clerk . . . . .	C	3	215	0	0	215	0	0
7 Clerk . . . . .	C	3	180	0	0	180	0	0
8 Clerk . . . . .	C	3	180	0	0	180	0	0
9 Clerk . . . . .	C	3	170	0	0	170	0	0
10 Clerk . . . . .	C	3	160	0	0	160	0	0
11 Clerk . . . . .	C	4	80	0	0	90	0	0
12 Clerk . . . . .	C	4	65	0	0	75	0	0
Junior Clerk . . . . .	C	Pr	35	0	0			
13 Clerk . . . . .	C	Pr	30	0	0	40	0	0
14 Clerk in Charge, Launceston ; also Registrar of Mines, £125, and Registrar of Births, £20	C	2	125	0	0	125	0	0
15 Clerk and Draftsman, Launceston ; also Mines, £115 . . . . .	C	3	110	0	0	110	0	0
16 Clerk—also Clerk Mines, £117 . . . . .	C	4	28	0	0	28	0	0
17 Chief Forest Officer . . . . .	G	A3	240	0	0	240	0	0
18 Inspector of Timber, &c. . . . .						200	0	0
19 Crown Lands' Bailiff, West Coast . . . . .	G	D	100	0	0	100	0	0
<b>PROFESSIONAL STAFF.</b>								
20 Chief Draftsman . . . . .	C	1B	365	0	0	365	0	0
21 Draftsman in Charge . . . . .	C	2	265	0	0	265	0	0
22 Draftsman (Computing) . . . . .	C	2	255	0	0	255	0	0
23 Draftsman . . . . .	C	3	195	0	0	195	0	0
24 Draftsman . . . . .	C	3	170	0	0	170	0	0
25 Draftsman . . . . .	C	3	160	0	0	160	0	0
26 Draftsman . . . . .	C	4	160	0	0	160	0	0
27 Draftsman . . . . .	C	4	145	0	0	145	0	0
28 Draftsman . . . . .	C	4	80	0	0	90	0	0
29 Junior Draftsman . . . . .	C	4	55	0	0	51	0	0
<b>MINING.</b>								
30 Chief Draftsman . . . . .	C	3	250	0	0	250	0	0
31 Draftsman . . . . .	C	3	200	0	0	200	0	0
32 Draftsman . . . . .	C	4	150	0	0	150	0	0
33 Messenger, also Messenger Statistician, £50 . .			50	0	0	50	0	0
Carried forward . . . . .			5558	0	0	5759	0	0

## Appropriation, 1905-6.

MINISTER OF LANDS AND WORKS—*continued.*

	CLASSIFICATION.		For 1904-5.	For 1905-6.
	Division.	Class.	<i>Fixed Establishment.</i>	<i>Fixed Establishment.</i>
			£ s. d.	£ s. d.
<b>DEPARTMENT OF LANDS AND SURVEYS—<i>continued.</i></b>				
<i>Brought forward</i> .....			5558 0 0	5759 0 0
CONTINGENCIES.				
34 Travelling Expenses Surveyor-General, Forest Officer, and Inspector of Timber .....			100 0 0	150 0 0
35 Incidental Expenses, Crown Bailiffs, &c., Commission for selling Public Lands; Collecting Residence, &c., Licences; Miscellaneous Expenses; Stationery, Stores, and Advertising .....			450 0 0	250 0 0
36 Printing .....			850 0 0	750 0 0
37 Expenses in connection with Examination of Surveyors .....			25 0 0	25 0 0
38 Postage, Telegrams, and Telephones .....			330 0 0	275 0 0
			1755 0 0	1450 0 0
<i>Total Department of Lands and Surveys</i> ..			7313 0 0	£7209 0 0
<i>Estimated Revenue earned for Services</i> .....			..	4650 0 0



## Appropriation, 1905-6.

## MINISTER OF LANDS AND WORKS—continued.

	CLASSIFICATION.		For 1904-5.			For 1905-6.				
	Division.	Class.	Fixed Establishment.		Special Staff charged to Loans.	Fixed Establishment.		Special Staff charged to Loans.		
			£	s. d.	£	s. d.	£	s. d.	£	s. d.
<b>LVII.—DEPARTMENT OF PUBLIC WORKS.</b>										
1 Minister for Public Works.....			..			..				
<b>CLERICAL STAFF.</b>										
2 Secretary for Public Works .....	C	1A	315	0 0	..	315	0 0	..		
3 Chief Clerk and Accountant .....	C	2	275	0 0	..	275	0 0	..		
4 Clerk .....	C	3	220	0 0	..	220	0 0	..		
5 Clerk .....	C	4	70	0 0	..	40	0 0	..		
6 Clerk .....	C	4	125	0 0	..	125	0 0	..		
7 Cashier and Account Clerk .....	C	4	105	0 0	..	110	0 0	..		
8 Clerk .....	C	4	80	0 0	..	90	0 0	..		
9 Clerk .....	C	4	75	0 0	..	85	0 0	..		
10 Clerk .....	C	3	40	0 0	140	0 0	40	0 0	140	0 0
Clerk .....	C	3	..	..	190	0 0	..	..	190	0 0
Clerk .....	C	4	..	..	80	0 0	..	..	80	0 0
<b>PROFESSIONAL STAFF.</b>										
11 Engineer-in-Chief .....	P	B1A	200	0 0	175	0 0	200	0 0	175	0 0
12 Engineer of Roads .....	G	A1B	50	0 0	250	0 0	50	0 0	250	0 0
13 Clerk and Engineering Draftsman .....	C	3	..	..	220	0 0	50	0 0	170	0 0
Draftsman .....	C	3	..	..	185	0 0	..	..	185	0 0
Clerk .....	C	3	..	..	150	0 0	..	..	150	0 0
14 Clerk .....	C	4	70	0 0	..	..	20	0 0	60	0 0
15 Inspector of Roads, North .....	G	A1B	50	0 0	300	0 0	50	0 0	300	0 0
Inspector of Roads, South .....	G	A3	..	..	200	0 0	..	..	200	0 0
Sub-Inspector of Roads, North .....	G	A3	..	..	170	0 0	..	..	170	0 0
Sub-Inspector of Roads, North .....	G	A3	..	..	170	0 0	..	..	170	0 0
Sub-Inspector of Roads, N. E. District .....	G	A3	..	..	156	10 0	..	..	157	0 0
Sub-Inspector of Roads, South .....	G	A3	..	..	185	0 0	..	..	185	0 0
Sub-Inspector of Roads, South .....	G	A3	..	..	140	17 0	..	..	..	
16 Sub-Inspector of Roads, West Coast (also Inspector of Mines, £250) .....	G	A2	..	..	75	0 0	25	0 0	50	0 0
Sub-Inspector of Roads, North-West Coast ..	C	3	..	..	156	10 0	..	..	157	0 0
Sub-Inspector of Roads, King Island .....	C	3	..	..	156	10 0	..	..	157	0 0
Clerk and Draftsman, North .....	C	7	..	..	140	0 0	..	..	120	0 0
17 Inspector of Public Buildings .....	G	A1B	50	0 0	300	0 0	50	0 0	300	0 0
Architectural Draftsman .....	C	3	..	..	200	0 0	..	..	200	0 0
Draftsman .....	C	3	..	..	185	0 0	..	..	185	0 0
Clerk of Works, North .....	G	A3	..	..	208	0 0	..	..	..	
Clerk of Works, South .....	G	A3	..	..	180	0 0	..	..	180	0 0
Clerk of Works .....	G	A3	..	..	172	3 0	..	..	..	
Clerk of Works .....	G	A3	..	..	172	3 0	..	..	..	
Clerk of Works .....	G	A3	..	..	187	16 0	..	..	..	
Engineer (Stanley) .....	P	1B	..	..	500	0 0	..	..	..	
Engineer (East Bay Neck) .....	P	1B	..	..	320	0 0	..	..	..	
Clerk (Stanley Harbour Works) .....	C	3	..	..	156	10 0	..	..	..	
18 Messenger .....	G	C	90	0 0	..	..	90	0 0	..	
<b>CONTINGENCIES.</b>										
19 Stationery, Stores, Incidental Expenses, including Stamps on Receipts for deposits, and Advertising .....			1815	0 0	5821	19 0	1835	0 0	3931	0 0
20 Printing .....			100	0 0	..	..	100	0 0	..	
21 Postages, Telegrams, Telephones .....			200	0 0	..	..	200	0 0	..	
			320	0 0	..	..	300	0 0	..	
			620	0 0	..	..	600	0 0	..	
<b>Total Department of Public Works .....</b>			<b>2435</b>	<b>0 0</b>	<b>5821</b>	<b>19 0</b>	<b>2435</b>	<b>0 0</b>	<b>3931</b>	<b>0 0</b>

## Appropriation, 1905-6.

## MINISTER OF LANDS AND WORKS—continued.

	CLASSIFICATION.		For 1904-5.	For 1905-6.
	Division.	Class.	Fixed Establishment.	Fixed Establishment.
			£ s. d.	£ s. d.
<b>LVIII.—DEPARTMENT OF MINES.</b>				
<b>HOBART.</b>				
1 Minister of Mines .....			.. ..	.. ..
2 Secretary for Mines .....	C	1A	400 0 0	400 0 0
3 Chief Clerk .....	C	2	250 0 0	250 0 0
4 Registrar of Mines; also Chairman of Board of Examiners, Merchant Ships' Officers Examination Act, £50 .....	C	2	210 0 0	210 0 0
5 Clerk, Cashier, and Accountant .....	C	3	210 0 0	210 0 0
6 Engrossing Clerk .....	C	3	190 0 0	190 0 0
7 Clerk .....	C	4	150 0 0	150 0 0
8 Clerk .....	C	4	160 0 0	.. ..
9 Junior Clerk .....	C	4	120 0 0	120 0 0
			70 0 0	80 0 0
			1760 0 0	1610 0 0
<b>LAUNCESTON.</b>				
10 Commissioner of Mines, Launceston, North and North-Eastern Division; also Commissioner Courts of Requests, Launceston, &c., £400, and Police Magistrate, &c., North-Eastern Division .....	P	A1A	150 0 0	150 0 0
11 Registrar of Mines; also Clerk in charge Lands, £125; and Registrar of Births, £20 .....	C	2	125 0 0	125 0 0
12 Clerk and Draftsman; also Lands, £110 .....	C	3	115 0 0	115 0 0
13 Clerk; also Clerk Lands Office, £28 .....	C	4	117 0 0	117 0 0
			507 0 0	507 0 0
<b>NORTH-EASTERN MINING DIVISION.</b>				
Registrar and Clerk to Commissioner—also Registrar Court of Requests and Police Clerk, £135 .....	C	3	65 0 0	.. ..
14 Registrar, Moorina—also Registrar Court of Requests, £25 .....	C	4	75 0 0	50 0 0
15 Registrar, Gladstone—also Postmistress, &c., £70 .....	C	5x	15 0 0	15 0 0
			155 0 0	65 0 0
<b>EASTERN MINING DIVISION.</b>				
16 Registrar and Clerk—also Police Clerk and Registrar Court of Requests, £75 .....	C	4	45 0 0	45 0 0
<b>NORTH-WESTERN MINING DIVISION.</b>				
17 Registrar of Mines, Waratah—also Constable, £96, and Registrar Court of Requests, Waratah, £16 .....	C	5x	15 0 0	15 0 0
<b>WESTERN MINING DIVISION.</b>				
18 Commissioner of Mines—also Police Magistrate, £297 10s. ....			100 0 0	100 0 0
19 Registrar, Zeehan—also Police Clerk, Zeehan, £120 .....	C	2	100 0 0	100 0 0
20 Registrar, Queenstown—also Registrar Court of Requests, £100 .....	C	3	75 0 0	75 0 0
			275 0 0	275 0 0
<i>Carried forward</i> .....			2757 0 0	2517 0 0

## Appropriation, 1905-6.

MINISTER OF LANDS AND WORKS—*continued.*

	CLASSIFICATION.		For 1904-5.	For 1905-6.
	Division.	Class.	Fixed Establishment.	Fixed Establishment.
			£ s. d.	£ s. d.
<b>DEPARTMENT OF MINES—<i>continued.</i></b>				
<i>Brought forward</i> .....			2757 0 0	2517 0 0
<i>Government Geologist and Inspectors of Mines.</i>				
21 Government Geologist & Chief Inspector of Mines	P	B1B	500 0 0	500 0 0
22 Clerk and Draftsman .....	C	3	175 0 0	175 0 0
23 Inspector of Mines, Zeehan—also of Works, Western Division, £75 .....	G	A1	250 0 0	250 0 0
24 Inspector of Mines, Queenstown .....	G	A2	250 0 0	250 0 0
25 Inspector of Mines, Launceston; also of Works, N.E. Division .....	G	A1B	350 0 0	350 0 0
			<u>1525 0 0</u>	<u>1525 0 0</u>
<i>Total Salaries</i> .....			4282 0 0	4042 0 0
<b>ALLOWANCES.</b>				
26 Forage Allowance—Inspector, Zeehan .....			50 0 0	50 0 0
<b>CONTINGENCIES, MINES.</b>				
27 Secretary for Mines, Travelling Expenses .....			25 0 0	25 0 0
28 Commissioner of Mines, Launceston, and North and North-Eastern Divisions, &c., Travelling Expenses .....			50 0 0	25 0 0
29 Commissioner, Western Mining Division, Tra- velling Expenses .....			25 0 0	10 0 0
30 Geologists and Inspectors of Mines, Travelling Expenses .....			200 0 0	250 0 0
31 Miscellaneous Expenses, including Stationery, Stores, Lithographic Paper, &c. ....			275 0 0	150 0 0
32 Gratuity to Mrs. E. K. Shanhan, for acting as Registrar of Mines, Derby .....			5 0 0	5 0 0
33 Printing .....			500 0 0	500 0 0
34 Travelling Expenses of Members of Mining Boards .....			25 0 0	15 0 0
35 Postage, Telegraphs, and Telephones .....			257 0 0	257 0 0
			<u>1362 0 0</u>	<u>1237 0 0</u>
<i>Total Department of Mines</i> . . .			<u>£5694 0 0</u>	<u>£5329 0 0</u>

## Appropriation, 1905-6.

## MINISTER OF LANDS AND WORKS—continued.

LIX.—AGRICULTURAL AND STOCK DEPARTMENT.	CLASSIFICATION.		For 1904-5.			For 1905-6.		
	Division.	Class.	Fixed Establishment.			Fixed Establishment.		
			£	s.	d.	£	s.	d.
SALARIES.								
1 Chief Inspector of Stock (also Chief Inspector Codlin Moth Act, £100) . . . . .	C	1A	300	0	0	300	0	0
2 Clerk, also Inspector Vegetation Diseases Act, with Fees 1s. per 100 cases fumigated . . . . .	C	4	120	0	0	120	0	0
3 Entomologist . . . . .	G	A3	225	0	0	225	0	0
4 Inspector, Launceston . . . . .	G	A3	125	0	0	125	0	0
5 Ditto . . . . .	G	A5x	20	0	0	20	0	0
6 Inspector, Hobart . . . . .	G	A5x	35	0	0	35	0	0
7 Ditto . . . . .	G	A5x	20	0	0	20	0	0
8 Inspector, Devonport . . . . .	G	A5x	20	0	0	20	0	0
9 Caretaker, Middle Island (with quarters and fuel, say £10), also Fees for caretaking imported stock . . . . .			80	0	0	80	0	0
10 Caretaker, Nubeena, also Poultry Expert (with quarters, fuel, and light, say £40) . . . . .			165	0	0	200	0	0
11 Assistant to Caretaker, Nubeena, and Poultry Expert, with quarters and run for cow . . . . .			52	0	0	80	0	0
			1162	0	0	1225	0	0
ALLOWANCES.								
12 Poultry Expert—House Allowance . . . . .			..	..	..	25	0	0
13 Poultry Expert, for Horse and Trap . . . . .			25	0	0	..	..	..
13 Inspector, Launceston, for Horse and Trap . . . . .			..	..	..	26	0	0
			25	0	0	51	0	0
CONTINGENCIES.								
14 Californian Thistle Destruction of; Rabbits on Crown Land, Destruction of; Officers' Travelling Expenses; Railway Fares; Stationery, Advertising, and Miscellaneous; Entomological and other Inspection of imported and exported Fruit, Trees, &c.; Fees and Expenses Veterinary Surgeon; cost of Export of Poultry . . . . .			593	0	0	600	0	0
			70	2	6	70	0	0
15 Postage, Telegrams, and Telephones . . . . .			45	0	0	60	0	0
16 Printing . . . . .			708	2	6	730	0	0
<i>Total Agricultural and Stock Department . . . . .</i>			1895	2	6	2006	0	0
<i>Estimated Revenue for Services . . . . .</i>			..	..	..	210	0	0
LX.—COUNCIL OF AGRICULTURE.								
SALARIES.								
1 Secretary, and Editor <i>Agricultural Gazette</i> ; also Inspector under "Vegetation Diseases" and "Manure Adulteration" Acts . . . . .	C	3	175	0	0	175	0	0
2 Dairy Expert . . . . .	G	2	260	0	0	260	0	0
3 Agricultural Expert . . . . .	G	3	210	0	0	210	0	0
			645	0	0	645	0	0
CONTINGENCIES.								
4 Members and Officers' Travelling Expenses; Railway Fares; Printing, including <i>Agricultural Gazette</i> ; Stationery, Advertising, and Miscellaneous . . . . .			800	0	0	800	0	0
5 Postage, Telegrams, & Telephones . . . . .			39	0	0	39	0	0
6 Classes for Agricultural Instruction . . . . .			..	..	..	161	0	0
			839	0	0	1000	0	0
<i>Total Council of Agriculture . . . . .</i>			1484	0	0	1645	0	0

## Appropriation, 1905-6.

MINISTER OF LANDS AND WORKS—*continued.*

	CLASSIFICATION.		For 1904-5.		For 1905-6.	
	Division.	Class.	Fixed Establishment.		Fixed Establishment.	
			£	s. d.	£	s. d.
<b>LXI.— DEPARTMENT OF RAILWAYS.</b>						
<b>SALARIES.</b>						
1	P	1	800	0 0	800	0 0
2	C	1	365	0 0	365	0 0
3	P	1	490	0 0	490	0 0
4	P	1	520	0 0	520	0 0
5	P	1	400	0 0	400	0 0
6	P	1	515	0 0	515	0 0
7	P	1	52	10 0	53	0 0
8						
			22,896	0 0	22,644	0 0
			26,038	10 0	25,787	0 0
<b>ALLOWANCES.</b>						
9			52	0 0	52	0 0
<b>WAGES.</b>						
10			101,000	0 0	104,000	0 0
<b>CONTINGENCIES.</b>						
11			45,000	0 0	43,500	0 0
12			4,200	0 0	4,200	0 0
			£ 49,200	0 0	47,700	0 0
<b>TOTAL RAILWAYS</b>			£ 176,290	10 0	177,539	0 0
<i>Estimated Revenue for Services</i>			..	£ 250,000	0 0	

## Appropriation, 1905-6.

## MINISTER OF LANDS AND WORKS—continued.

	CLASSIFICATION.		For 1904-5.	For 1905-6.
	Division.	Class.	Fixed Establishment.	Fixed Establishment.
			£ s. d.	£ s. d.
<b>LXII.—ROADS, BRIDGES, SURVEYS, TRACKS, BUILDINGS, FERRIES, &amp;c.</b>				
1 Reserve for Expenditure in connection with Residence Areas and Mining Settlement....			1000 0 0*	1000 0 0*
2 Survey of Lands for Sale, for Lease, or for Public Purposes .....			5000 0 0	12,000 0 0
3 In aid of Road Trusts in accordance with terms of Act, 3 Edward VII. No. 22 .....			500 0 0	800 0 0
4 Subsidies for Main Roads.....			7500 0 0	7800 0 0
5 Bridges, and Jetties generally .....			2500 0 0	2000 0 0
6 Repairs to Tracks generally .....			250 0 0	150 0 0
7 Repairs, Alterations, and Miscellaneous Expenses in connection with Public Buildings, including Country Buildings .....			650 0 0	650 0 0
8 Furniture and General Repairs, Parliamentary Buildings.....			100 0 0	100 0 0
9 Furniture, Public Offices generally .....			175 0 0	175 0 0
10 Repairs to Roads and Fences, and improving and maintaining Franklin Square, Queen's Domain, Barrack Reserve, Hobart, and Parliament House Reserve .....			325 0 0	325 0 0
11 Rates on Government Property .....			50 0 0	60 0 0
12 Aid to Ferry, Hobart to Bellerive.....			300 0 0	300 0 0
13 Ditto, Risdon.....			50 0 0	50 0 0
14 Ditto Ferries, Arthur and Pieman Rivers ..			75 0 0	75 0 0
<b>TOTAL ROADS, BRIDGES, SURVEYS, &amp;c. ....</b>			<b>£18,475 0 0</b>	<b>25,485 0 0</b>
<i>Estimated Revenue for Survey Fees. ....</i>			..	12,000 0 0
*Reserved by Law .....			£1000	
To be voted .....			24,485	
			<u>£25,485</u>	
<b>LXIII.—MISCELLANEOUS.</b>				
1 Destruction of Native Tigers.....			100 0 0	100 0 0
2 Inspection of Private Railways.....			25 0 0	25 0 0
<i>Total Miscellaneous .....</i>			<b>£125 0 0</b>	<b>125 0 0</b>

## Appropriation, 1905-6.

**Miscellaneous—General.**

	CLASSIFICATION.		For 1904-5.			For 1905-6.		
	DIVISION.	CLASS.	Fixed Establishment.			Fixed Establishment.		
			£	s.	d.	£	s.	d.
<b>LXIV.—Miscellaneous—General.</b>								
1 Cost of Printing <i>Hobart Gazette</i> .....			1450	0	0	1300	0	0
2 Cost of Printing, Binding, and Distributing Acts of Parliament, &c., for sale to Departments, the public, and free issues .....			..			100	0	0
3 Railway Fares, Passes, Official Train Services, not otherwise provided for—For Distinguished Visitors, Visiting Officers of Military and Naval Forces, Members of Parliament of other States, State and Commonwealth Officials, Representatives of the Press, &c.....			1250	0	0	1200	0	0
4 Post and Telegraph Fees not otherwise provided for .....			300	0	0	100	0	0
5 Cost of Printing, not otherwise provided for....			250	0	0	100	0	0
6 To provide for Payment of three-fourths Customs Duties on goods imported for Public Works chargeable to Loans.....			1500	0	0	800	0	0
7 Analysis of Articles for State and Commonwealth Departments .....			400	0	0	400	0	0
8 Unforeseen Expenses to be hereafter accounted for			800	0	0	800	0	0
9 To provide for Payment of Salaries to retiring Civil Servants whilst on leave of absence, in accordance with Resolutions of Parliament.			220	0	0	} 1000	0	0
10 To provide for Payment of Gratuities to Widows of deceased Civil Servants of the State, in accordance with Resolutions of Parliament ..			..					
To recoup Mr. Solomon Child the amount of fees and expenses paid by him in his endeavours (during a long period) to obtain release from bail .....			100	0	0	..		
<i>Total Miscellaneous</i> .....			£6270	0	0	5800	0	0

