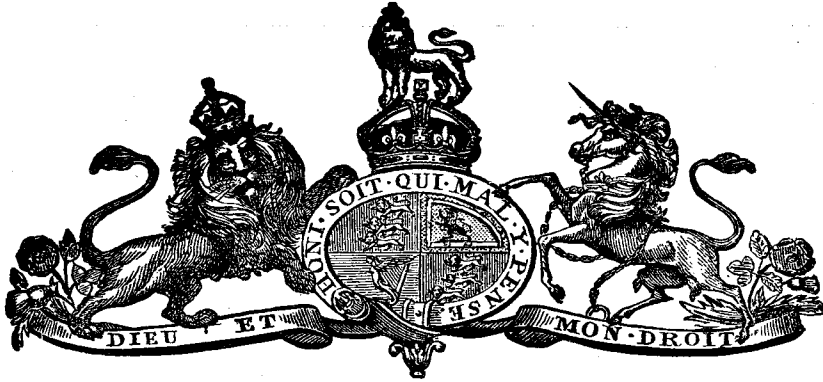


T A S M A N I A .



1910.

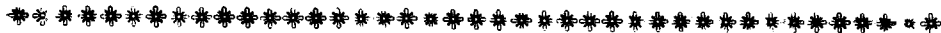
ANNO PRIMO

GEORGII V. REGIS,

No. 25.

ANALYSIS.

1. Short title.
2. Issue and application of £324,923 7s. 7d.
3. Appropriation of supplies.
4. Moneys payable by warrant of the Governor.
5. Credit to be given to the Treasurer in accounts.



AN ACT to grant and apply a Sum out of <sup>A.D.</sup> 1910.  
the Consolidated Revenue Fund to the  
Service of the Year ending the Thirtieth  
day of *June*, One thousand nine hundred and  
eleven, and to appropriate the Supplies  
granted for such Year in this Session of the  
Parliament. [20 *December*, 1910.]

**BE** it enacted by His Excellency the Governor of *Tasmania*, by and  
with the advice and consent of the Legislative Council and House of  
Assembly, in Parliament assembled, as follows :—

**1** This Act may be cited as “The Appropriation Act, 1910-11.” Short title.  
4s. 4d.]

*Appropriation, 1910-11.*

A.D. 1910.

Issue and appli-  
cation of  
£324,923 7s. 7d.

**2** The Treasurer may issue out of the Consolidated Revenue, and apply towards making good the supply hereby granted to His Majesty for the service of the year ending the Thirtieth day of *June*, One thousand nine hundred and eleven, the sum of Three hundred and twenty-four thousand nine hundred and twenty-three Pounds Seven Shillings and Seven Pence.

Appropriation of  
supplies.

**3** All sums granted by this Act and "The Supply Act (No. 1), 1910-11," and "The Supply Act (No. 2), 1910-11," out of the Consolidated Revenue towards making good the supply granted to His Majesty, amounting, as appears by the First Schedule to this Act, in the aggregate to the sum of Five hundred and forty-four thousand nine hundred and six Pounds Seven Shillings and Seven Pence are appropriated, and shall be deemed to have been appropriated as from the date of the passing of "The Supply Act (No. 1), 1910-11," for the purposes and services expressed in the Second Schedule.

Moneys payable  
by warrant of  
the Governor.

**4** The Treasurer shall issue and pay the several sums to such persons for the purposes in the said Second Schedule mentioned, upon such days and in such proportions as the Governor, by any warrant under his hand, from time to time orders and directs; and the payments so to be made shall be charged upon and payable out of the Consolidated Revenue.

Credit to be  
given to the  
Treasurer in  
accounts.

**5** The said Treasurer shall be allowed credit in his accounts for any sums of money paid by him in pursuance of any such warrant as aforesaid; and the receipts of the respective persons to whom the same are so paid shall be a full and valid discharge to the said Treasurer in passing his said accounts for any such sums as are therein mentioned, and he shall receive credit for the same accordingly.

**FIRST SCHEDULE.**

## GRANTS OUT OF THE CONSOLIDATED REVENUE.

	£	s.	d.
Under "The Supply Act (No. 1), 1910-11".....	175,888	0	0
Under "The Supply Act (No. 2), 1910-11".....	44,100	0	0
Under this Act .....	324,923	7	7
	<u>£544,906</u>	<u>7</u>	<u>7</u>

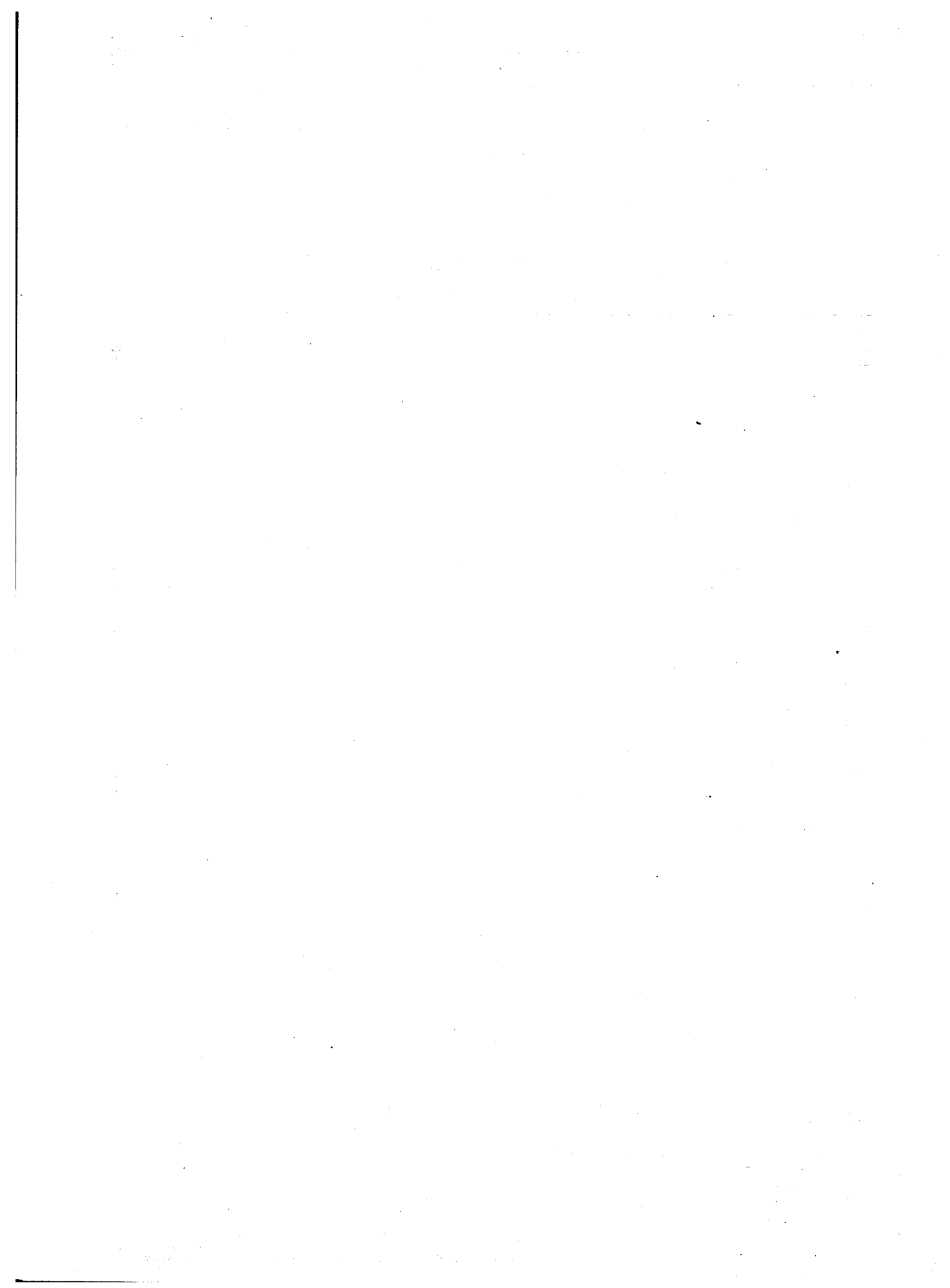
## Appropriation, 1910-11.

## SECOND SCHEDULE

# AUTHORISED EXPENDITURE

CHARGEABLE ON  
CONSOLIDATED REVENUE FUND  
FOR THE YEAR 1910-11.

Depart- mental Number.		1909-10.		1910-11.		To be reserved by Law.		To be voted.	
		£	s. d.	£	s. d.	£	s. d.	£	s. d.
	<b>PREMIER—</b>								
1	His Excellency the Governor's Estab- lishment .....	3486	0 0	3486	0 0	3320	0 0	166	0 0
2	Ministerial .....	3400	0 0	3400	0 0	3200	0 0	200	0 0
3	Premier's Office .....	532	0 0	542	0 0	..	..	542	0 0
4	Agent-General in England .....	1990	0 0	2115	0 0	1910	0 0	205	0 0
5	Miscellaneous .....	130	0 0	150	0 0	..	..	150	0 0
	<b>CHIEF SECRETARY—</b>								
6	Legislature .....	11,365	6 8	12,502	16 8	6733	6 8	5769	10 0
7	Chief Secretary's Department .....	912	10 0	930	0 0	..	..	930	0 0
8	Audit Department .....	3012	10 0	3050	0 0	500	0 0	2550	0 0
9	Statistical & Registration Department .....	2780	0 0	2661	13 4	..	..	2661	13 4
10	Inspection of Machinery .....	1667	10 0	1750	0 0	..	..	1750	0 0
11	Public Buildings .....	2671	5 0	2665	16 8	..	..	2665	16 8
12-20	Charitable and Medical Institutions ..	51,511	17 9	52,851	15 0	..	..	52,851	15 0
21	Magazines and Explosives .....	258	0 0	235	0 0	..	..	235	0 0
22	Public Service Board .....	562	10 0	560	0 0	..	..	560	0 0
23	Miscellaneous .....	6010	0 0	6591	0 0	1750	0 0	4841	0 0
	<b>TREASURER—</b>								
24	Treasury .....	5102	1 8	5099	15 0	..	..	5099	15 0
25	Office of Taxes .....	9961	5 0	9607	18 4	..	..	9607	18 4
26	Printing Department .....	13,536	10 0	13,439	0 0	..	..	13,439	0 0
27	State Savings Bank .....	2723	15 0	2788	15 0	..	..	2788	15 0
28	Miscellaneous .....	1530	0 0	1910	0 0	..	..	1910	0 0
	<b>ATTORNEY-GENERAL—</b>								
29-36	Judicial .....	15,548	10 3	14,291	0 0	4350	0 0	9941	0 0
37-40	Magistracy .....	2653	13 4	2467	10 0	..	..	2467	10 0
41	Miscellaneous .....	..	..	1860	0 0	..	..	1860	0 0
42	Police .....	39,758	12 6	40,839	11 8	..	..	40,839	11 8
43-45	Gaols .....	5461	0 0	5712	0 0	..	..	5712	0 0
46-47	Education .....	82,212	10 0	89,064	10 0	4000	0 0	85,064	10 0
48	Mines .....	5882	10 0	6315	0 0	..	..	6315	0 0
	<b>MINISTER OF LANDS AND WORKS—</b>								
49	Lands and Department .....	7251	10 0	8041	10 0	..	..	8041	10 0
50	Public Works Department .....	2516	5 0	2546	5 0	..	..	2546	5 0
51	} Agricultural and Stock Department .. } Council of Agriculture .....	1752	0 0	6534	10 0	..	..	6534	10 0
52	Railways .....	2860	0 0	..	..	..	..	..	..
53	Roads, Bridges, Surveys, &c. ....	208,587	0 0	220,731	10 0	..	..	220,731	10 0
54	Miscellaneous .....	33,530	0 0	34,910	0 0	400	0 0	34,510	0 0
		475	0	525	0 0	..	..	525	0 0
55	<b>MISCELLANEOUS—General</b> .....	11,595	2 0	6863	4 1	..	..	6863	4 1
	<b>PENSIONS, INTEREST, AND SINKING FUNDS—</b>								
56	Pensions .....	13,226	6 10	13,103	8 6	12,226	15 0	876	13 6
57	Interest .....	380,759	0 0	387,551	0 0	387,551	0 0	..	..
58	Sinking Funds .....	44,345	0 0	46,236	0 0	43,081	0 0	3155	0 0
		£ 981,557	1 0	1,013,928	9 3	469,022	1 8	544,906	7 7



## Appropriation, 1910-11.

## Premier.

	CLASSIFICATION.		1909-10.	1910-11.	Total Emoluments, including estimated value of allowances not received in cash.
	Class.	Sub-division.	Fixed Establishment.	Fixed Establishment.	
			£ s. d.	£ s. d.	£
<b>I.—HIS EXCELLENCY THE GOVERNOR'S ESTABLISHMENT.</b>					
SALARIES.					
1 His Excellency the Governor, including Allowance .....			2750 0 0	2750 0 0	
2 Office Keeper, Caretaker, and House Bailiff, with Quarters and Uniform, say £26 .....	G 2		116 0 0	116 0 0	142
3 Overseer of Grounds, with Quarters, say £20 ..			100 0 0	100 0 0	120
			2966 0 0	2966 0 0	
CONTINGENCIES.					
4 Maintenance of Government House, under 4 Ed. VII. No. 10 .....			400 0 0	400 0 0	
5 Stationery, Stores, Fuel, Light, Printing, Newspapers (for offices), Uniform for Office Attendant, and Maintenance of Gas Lamps at Gates .....			50 0 0	50 0 0	
6 Postal Charges, Telegrams, and Telephones....			70 0 0	70 0 0	
			520 0 0	520 0 0	
<i>Total His Excellency the Governor....</i>			3486 0 0	3486 0 0	
Reserved by Law .....			£3320 0 0		
To be voted .....			166 0 0		
			£3486 0 0		
<b>II.—MINISTERIAL.</b>					
SALARIES.					
1 Premier .....			200 0 0	200 0 0	
2 Chief Secretary .....			750 0 0	750 0 0	
3 Treasurer .....			750 0 0	750 0 0	
4 Attorney-General .....			750 0 0	750 0 0	
5 Minister of Lands and Works .....			750 0 0	750 0 0	
			3200 0 0	3200 0 0	
CONTINGENCIES.					
6 Travelling Expenses of Ministers, Carriage Hire, Miscellaneous Expenses, and Entertainment of Distinguished Visitors .....			200 0 0	200 0 0	
<i>Total Ministerial .....</i>			3400 0 0	3400 0 0	
Reserved by Law .....			£3200 0 0		
To be voted .....			200 0 0		
			£3400 0 0		

## Appropriation, 1910-11.

## PREMIER—continued.

III.—PREMIER'S OFFICE.	CLASSIFICATION.		1909-10.	1910-11.	Total Emoluments, including estimated value of allowances not received in cash.
	Class.	Sub-division.	Fixed Est. abtishment.	Fixed Establishment.	
SALARIES.					
1 Secretary to Premier; also Clerk to Executive Council .....	C1		£ 300 0 0	£ 300 0 0	£
2 Clerk .....	C4b		110 0 0	120 0 0	
			410 0 0	420 0 0	
CONTINGENCIES.					
3 Stationery and Sundries (including Executive Council) .....			46 0 0	46 0 0	
4 Postal Charges, Telegrams, and Telephone .....			66 0 0	66 0 0	
5 Printing .....			10 0 0	10 0 0	
			122 0 0	122 0 0	
<i>Total Premier's Office</i> .....			532 0 0	542 0 0	
IV.—AGENT-GENERAL IN ENGLAND.					
SALARIES.					
1 Agent-General .....			1000 0 0	1000 0 0	
2 Secretary and Chief Clerk .....			300 0 0	300 0 0	
3 Clerk .....			140 0 0	150 0 0	
4 Junior Clerk .....			50 0 0	65 0 0	
			1490 0 0	1515 0 0	
CONTINGENCIES.					
5 Travelling and Miscellaneous Expenses; Stationery, Stores, and Incidental Expenses; Rent of Office, Postage, Telegrams, and Cablegrams .....			500 0 0	600 0 0	
<i>Total Agent-General's Department</i> .....			1990 0 0	2115 0 0	
Reserved by Law .....			£1910		
To be voted ... ..			205		
			£2115		
V.—MISCELLANEOUS. <i>Premier.</i>					
1 Cost of Parliamentary and other Papers and Books from England and elsewhere .....			50 0 0	50 0 0	
2 Cost of Publications, including Photographs, sent to England and elsewhere .....			80 0 0	100 0 0	
			130 0 0	150 0 0	

*Appropriation, 1910-11.*

**Chief Secretary.**

	CLASSIFICATION.		1909-10.	1910-11.	Total Emoluments, including estimated value of allowances not received in cash.
	Class.	Sub-division.	<i>Fixed Establishment</i>	<i>Fixed Establishment.</i>	
			£ s. d.	£ s. d.	£
<b>Legislaturr.</b>					
VI.—HOUSES OF PARLIAMENT					
LEGISLATIVE COUNCIL.					
SALARIES.					
1 President .....			350 0 0	350 0 0	
2 Chairman of Committees.....			200 0 0	200 0 0	
3 Clerk of the Council; also Pension, £363 13s. 4d.....			33 6 8	33 6 8	400
4 Clerk Assistant, also Usher of Black Rod (also £125, see Miscellaneous-General).....			150 0 0	150 0 0	875
5 Usher of the Black Rod.....			100 0 0	100 0 0	
6 Office Keeper, Chamber Attendant, and Clerk of Papers—Quarters, Fuel, Light, Water, and Uniform, say £37 a year .....			130 0 0	140 0 0	177
7 Junior Messenger .....			50 0 0	60 0 0	
			1013 6 8	1033 6 8	
CONTINGENCIES.					
8 Incidental Expenses, including Catering, Stationery, Stores, and Uniform for Office Keeper and Messenger .....			80 0 0	80 0 0	
9 Postal Charges, Telegraphs, and Telephones....			20 0 0	20 0 0	
			100 0 0	100 0 0	
<i>Total Legislative Council. ..</i>			<u>1113 6 8</u>	<u>1133 6 8</u>	

## Appropriation, 1910-11.

## CHIEF SECRETARY—continued.

	CLASSIFICATION.		1909-10.	1910-11.	Total Emoluments, including estimated value of allowances not received in cash.
	Class.	Sub-division.	Fixed Establishment.	Fixed Establishment.	
<b>HOUSE OF ASSEMBLY.</b>					
<b>SALARIES.</b>					
1 Speaker .....			£ 350 0 0	£ 350 0 0	
2 Chairman of Committees .....			250 0 0	250 0 0	
3 Clerk of the House and Librarian to Parliament			400 0 0	400 0 0	
4 Sergeant-at-Arms .....			100 0 0	100 0 0	
5 Clerk-Assistant and Assistant-Librarian .....			180 0 0	187 10 0	
6 Office Keeper, Library and Chamber Attendant, and Clerk of Papers (with Quarters, Fuel, Light, Water, and Uniform, say £33 a year)			145 0 0	150 0 0	183
7 Doorkeeper and Messenger, with Uniform, say £3			100 0 0	105 0 0	108
8 Housekeeper .....			25 0 0	25 0 0	
			1550 0 0	1567 10 0	
<b>CONTINGENCIES.</b>					
9 Incidental Expenses, including Catering and Insurance of Books in Library .....			150 0 0	500 0 0	
10 Newspapers and Books .....			120 0 0	120 0 0	
11 Stationery, Stores, and Uniforms for Messengers.			47 0 0	47 0 0	
12 Postal Charges, Telegraphs, and Telephones....			35 0 0	30 0 0	
			352 0 0	697 0 0	
<i>Total House of Assembly</i> .....			1902 0 0	2 64 10 0	
<b>GENERAL.</b>					
1 Reimbursement of Expenses of Members of Parliament .....			4000 0 0	5000 0 0	
<i>Total Ordinary Expenditure Houses of Parliament</i>			7015 6 8	8397 16 8	
<b>ELECTORAL</b>					
1 Electoral Rolls, Expenses of Preparing and Printing .....			1225 0 0	780 0 0	
2 Elections, Expenses of .....			25 0 0	25 0 0	
3 Postage and Telegrams .....					
<i>Total Electoral</i> .....			1250 0 0	805 0 0	



## Appropriation, 1910-11.

CHIEF SECRETARY—*continued.*

	CLASSIFICATION.		1909-10.			1910-11.			Total Emoluments, including estimated value of allowances not received in cash £
	Class.	Sub-division.	Fixed Establishment.			Fixed Establishment			
			£	s.	d.	£	s.	d.	
<b>SPECIAL SERVICES.</b>									
1			2000	0	0	2000	0	0	
2			1100	0	0	1300	0	0	
			3100	0	0	3300	0	0	
			£11,365	6	8	£12,502	16	8	
<b>TOTAL LEGISLATURE</b> .....									
Reserved by Law			£6733	6	8				
To be voted			5769	10	0				
			£12,502	16	8				
 <b>VII.—CHIEF SECRETARY'S DEPARTMENT.</b>									
<b>SALARIES</b>									
1			425	0	0	425	0	0	} 486
2			60	0	0	60	0	0	
3			187	10	0	195	0	0	
4			120	0	0	130	0	0	
			792	10	0	810	0	0	
<b>CONTINGENCIES.</b>									
5			50	0	0	50	0	0	
6			20	0	0	20	0	0	
7			50	0	0	50	0	0	
			120	0	0	120	0	0	
			£912	10	0	£930	0	0	
<b>Total Chief Secretary's Department</b> ...									
<i>Estimated Revenue for Services rendered to Commonwealth</i> .....									
			100	0	0	100	0	0	
 <b>VIII.—AUDIT DEPARTMENT.</b>									
<b>SALARIES.</b>									
1			500	0	0	500	0	0	
2			350	0	0	360	0	0	
3			232	10	0	240	0	0	
4			232	10	0	240	0	0	
5			202	10	0	210	0	0	
6			202	10	0	210	0	0	
7			202	10	0	210	0	0	
8			180	0	0	187	10	0	
9			140	0	0	150	0	0	
10			140	0	0	120	0	0	
11			110	0	0	40	0	0	
12			80	0	0	95	0	0	
13						47	10	0	
			2572	10	0	2610	0	0	
<i>Carried forward</i> .....									

## Appropriation, 1910-11.

## CHIEF SECRETARY—continued.

	CLASSIFICATION		1909-10.	1910-11.	Total Emoluments, including estimated value of allowances not received in cash.
	Class.	Sub-division.	Fixed Establishment.	Fixed Establishment.	
			£ s. d.	£ s. d.	£ s. d.
<b>AUDIT DEPARTMENT—continued.</b>					
<i>Brought forward</i> .....			2572 10 0	2610 0 0	
<b>CONTINGENCIES.</b>					
14 Travelling Expenses .....			330 0 0	350 0 0	
15 Stationery, Advertising, and Incidental Expenses .....			35 0 0	35 0 0	
16 Printing .....			25 0 0	25 0 0	
17 Postal Charges, Telegrams, and Telephones .....			50 0 0	30 0 0	
			440 0 0	440 0 0	
<i>Total Audit Department</i> .....			£3012 10 0	£3050 0 0	
Reserved by Law .....			£500 0 0		
To be voted .....			2550 3 4		
			£3050 3 4		
<b>IX.—STATISTICAL AND REGISTRATION DEPARTMENT.</b>					
<b>SALARIES.</b>					
1 Statistician and Registrar-General .....	PA		600 0 0	600 0 0	
2 Assistant-Statistician, Chief Clerk, and Registrar for Hobart; also Returning Officer, £10, from 1st Sept., at £260 .....	C2	3	340 0 0	216 13 4	261 13 4
3 Clerk and Deputy-Registrar, Hobart, £210 to 31st August, and £180 from 1st Sept. ....	C3	3	210 0 0	185 0 0	
4 Clerk .....	C4a		160 0 0	160 0 0	
5 Clerk .....	C4a		130 0 0	140 0 0	
6 Clerk .....	C4a		160 0 0	160 0 0	
7 Clerk, Correspondence .....				80 0 0	
8 Registrar, Launceston—also Registrar of Mines, Launceston, £110, and Clerk Lands Office, £110 .....	PC	4	20 0 0	20 0 0	240 0 0
			1620 0 0	1561 13 4	
<b>ALLOWANCES.</b>					
9 To Country Registrars .....			500 0 0	475 0 0	
<b>CONTINGENCIES.</b>					
10 Registers, Incidental Expenses, Cost of collecting Statistics, Stationery, &c. ....			150 0 0	125 0 0	
11 Printing .....			400 0 0	400 0 0	
12 Postal Charges, Telegrams, and Telephones .....			110 0 0	100 0 0	
			660 0 0	625 0 0	
<i>Total Statistical and Registration Department</i> .....			£2780 0 0	£2661 13 4	
<b>X.—INSPECTION OF MACHINERY.</b>					
<b>SALARIES.</b>					
1 Chief Inspector of Machinery, also Chief Inspector of Explosives, also Examiner in Steam, say £12 .....	PB	3	327 10 0	335 0 0	347 0 0
2 Assistant-Inspector, also Examiner in Steam, say £5 .....	PC	5	250 0 0	260 0 0	265 0 0
3 Second Assistant-Inspector .....	PC	5	250 0 0	260 0 0	
4 Third Assistant-Inspector and Clerk, also Adviser Hobart Corporation on Mechanical Engineering, say £12 .....	PC	5	230 0 0	240 0 0	252 0 0
5 Fourth Assistant-Inspector (half-year's Salary only in 1908-9) .....	PC	5	180 0 0	190 0 0	
<i>Carried forward</i> .....			1237 10 0	1285 0 0	

Appropriation, 1910-11.

CHIEF SECRETARY—continued.

	CLASSIFICATION.		1909-10.	1910-11.	Total Emoluments, including estimated value of allowances not received in cash.
	Class.	Sub-division.	Fixed Establishment.	Fixed Establishment.	
<b>INSPECTION OF MACHINERY—continued.</b>					
<i>Brought forward</i> .....			£ 1237 10 0	£ 1285 0 0	£
<b>CONTINGENCIES.</b>					
6 Travelling Expenses .....			325 0 0	370 0 0	
7 Stationery, Stores, Instruments and Books, Printing, and Incidental Expenses .....			70 0 0	60 0 0	
8 Postal Charges, Telegrams, and Telephones .....			35 0 0	35 0 0	
			430 0 0	465 0 0	
<i>Total Inspection of Machinery</i> .....			£1667 10 0	£1750 0 0	
<i>Estimated Revenue for Services rendered</i> .....			1160 0 0	1600 0 0	
<b>XI.—PUBLIC BUILDINGS.</b>					
<b>SALARIES.</b>					
1 Head Office Keeper, Hobart, and Supervisor of Stores—with Quarters, Fuel, Light, Water, to 30th Sept.—House allowance from 1st Oct. Uniform, say £37 .....	G1		170 0 0	175 0 0	212
2 Office Keeper Public Buildings, Davey-street, also Messenger Mines and Lands Departments, with Quarters, Fuel, Light, Water, and Uniform, say £33 .....	G2		135 0 0	135 0 0	168
3 Resident Messenger Statistical and Lands Departments, with Quarters, Fuel, Light, Water, and Uniform, say £33 .....	G2		105 0 0	105 0 0	138
4 Messenger Attorney-General's Department, with Quarters, Fuel, Light, Water, and Uniform, say £33 .....	G2		105 0 0	105 0 0	138
5 Messenger Chief Secretary's Department and Health Department, with Quarters, Fuel, Light, Water, and Uniform, say £33 .....	G2		100 0 0	100 0 0	133
6 Messenger Education, with Quarters, Water, and Uniform, say £23 (also Book Depôt, £20) ..	G2		100 0 0	100 0 0	143
7 Messenger Treasury, with Quarters, Fuel, Light, and Uniform, say £33 .....	G2		95 0 0	100 0 0	133
8 Messenger Lands' Titles .....	G3		110 0 0	110 0 0	113
9 Messenger Audit and Stores Departments .....	G3		105 0 0	110 0 0	113
10 Messenger Public Works .....	G3		105 0 0	110 0 0	113
11 Messenger Solicitor-General and Supreme Court .....	G3	With Uniform, say £3 each	105 0 0	110 0 0	113
12 Messenger Offices of Taxes and State Savings Bank .....	G3		105 0 0	110 0 0	113
13 Messenger Judges .....	G3		85 0 0	90 0 0	93
14 Messenger Printing Department .....	G3		95 0 0	100 0 0	103
15 Messenger Chief Secretary's Department .....	G3		100 0 0	105 0 0	108
16 Junior Messenger from 1 Sept., at £40 ..	G4		50 0 0	33 6 8	53
			1670 0 0	1698 6 8	
<i>Launceston—</i>					
17 Office Keeper, Launceston—also with Quarters, Fuel, Light, Water, and Uniform, say £33 ..	G2		115 0 0	115 0 0	148
			1785 0 0	1813 6 8	
<b>ALLOWANCES.</b>					
18. Head Office Keeper—House allowance £35 per annum from 1st October .....			..	26 5 0	
<b>CONTINGENCIES.</b>					
19 Fuel, Light, and Water, Public Offices, Hobart .....			660 0 0	600 0 0	
20 Fuel, Light, and Water, ditto, Launceston .....			125 0 0	125 0 0	
<i>Carried forward</i> .....			785 0 0	725 0 0	

## Appropriation, 1910-11.

CHIEF SECRETARY—*continued.*

	CLASSIFICATION.		1909-10.	1910-11.	Total Emoluments, including estimated value of allowances not received in cash.
	Class.	Sub-division.	Fixed Establishment.	Fixed Establishment.	
<b>PUBLIC BUILDINGS—<i>continued.</i></b>					
			£ s. d.	£ s. d.	£
<i>Brought forward</i> .....			1785 0 0	1839 11 8	
21 Stores for Offices generally .....			785 0 0	725 0 0	
22 Fuel and Light, Country Public Offices .....			25 0 0	25 0 0	
23 Uniforms for Office Keepers and Messengers, Hobart and Launceston .....			5 0 0	5 0 0	
24 Telephone Service .....			65 0 0	65 0 0	
			6 5 0	6 5 0	
			886 5 0	826 5 0	
<i>Total Public Buildings</i> .....			£2671 5 0	£2665 16 8	
<b>Charitable and Medical Institutions.</b>					
<b>XII.—CHARITABLE DEPARTMENT.</b>					
<b>SALARIES.</b>					
1 Administrator & Registrar of Charitable Institutions; also Superintendent New Town Charitable Institution; Superintendent Boys' Training School; Superintendent Launceston Invalid Depôt, and Secretary Neglected Children Department, with Quarters, Fuel, Light, Water, and Ration, say £80 a year. ....	C	1	300 0 0	300 0 0	330
2 Clerk, also Clerk New Town Charitable Institution, Clerk Neglected Children Department, and Collector Charitable Institutions, at a Commission of 5 per cent., with Quarters, Fuel, Light, and Water, say £70 a year. ....	C4a		120 0 0	120 0 0	190
3 Clerk .....	C4b		80 0 0	50 0 0	
4 Inquiring Officer, Hobart; also Storekeeper, Charitable Department, £12—with Quarters, Fuel, Light, and Water, £30; and Inspector, Neglected Children Department .....	G2		150 0 0	150 0 0	192
5 Inquiring Officer, Launceston; also Deputy-Superintendent, Invalid Depôt—with Quarters, Fuel, and Light, say £52; Inspecting Officer, Neglected Children, Launceston, and Collector, Charitable Institutions, at a commission of 10 per cent., say £34; Truant Officer, £100 to 30th September; Superintendent Gaol, Launceston, £110 from 1st October .....	G1		45 0 0	45 0 0	241
<i>Carried forward</i> .....			695 0 0	665 0 0	

## Appropriation, 1910-11.

CHIEF SECRETARY—*continued.*

	CLASSIFICATION.		1909-10.	1910-11.	Total Emoluments, including estimated value of allowances not received in cash.
	Class.	Sub-division.	Fixed Establishment.	Fixed Establishment.	
<b>CHARITABLE DEPARTMENT—<i>continued.</i></b>					
<i>Brought forward</i> .....			£ 695 0 0	£ 665 0 0	£
<b>CONTINGENCIES.</b>					
6 Out-door Relief, Medical Attendance on Destitute Persons in Hobart, Launceston, and Country Districts, Temporary Provision for Tramps, and Maintenance of Destitute Persons not otherwise provided for .....			2000 9 0	2200 0 0	
7 Maintenance of Deaf, Dumb, and Blind Children, Maintenance of Destitute Persons in Country Hospitals, Examination of Insane, Stationery and Stores, and Miscellaneous Expenses.....			870 0 0	500 0 0	
8 Transport and Funeral Expenses .....			300 0 0	250 0 0	
9 Postal Charges, Telegrams, and Telephones ..			80 0 0	80 0 0	
10 Printing .....			15 0 0	15 0 0	
11 Treatment of Advanced Cases of Consumption .....			...	250 0 0	
			3265 0 0	3295 0 0	
<i>Total Charitable Department</i> ...			£3960 0 0	£3960 0 0	
<b>XIII.—TRAINING SCHOOL FOR BOYS, AND FARM.</b>					
<b>SALARIES.</b>					
1 Superintendent—also Superintendent New Town Charitable Institution, Administrator of Charitable Grants, Superintendent Launceston Invalid Depôt, and Secretary Neglected Children Department.....			See Charitable	Department.	
2 Working Overseer, with House Allowance, Fuel, Light, Water, and Ration, £50 a year ...	G2		75 0 0	100 0 0	150
3 Discipline Officer and Drill Instructor ...	G2	} With Quarters, Fuel, Light, Water, and Ration, £40 a year	90 0 0	90 0 0	130
Farm Workmaster (for 3 months only at £70)	G3		17 10 0	...	
4 Female Attendant, with Quarters, &c., £20 ...	G4		40 0 0	40 0 0	60
5 Schoolmaster; also Assistant Teacher Education Department, £160 .....			15 0 0	15 0 0	175
6 General Help, with Quarters, Fuel, Light, Water, and Rations, £22 a year .....			30 0 0	50 0 0	72
<b>CONTINGENCIES.</b>					
7 Provisions, Clothing, Bedding, Stores, Stationery, Fuel, Light, Alterations and Repairs to Buildings; Miscellaneous Expenses; Farm Expenses, including Derwent Park .....			267 10 0	295 0 0	
			650 0 0	650 0 0	
<b>ALLOWANCES.</b>					
8 Working Overseer—House Allowance .....			...	26 0 0	
<i>Total Training School for Boys, and Farm</i>			£917 10 0	£971 0 0	
<i>Estimated Revenue for Services, &amp;c.</i> .....			600 0 0	80 0 0	

## Appropriation, 1910-11.

## CHIEF SECRETARY—continued.

	CLASSIFI- CATION.		1909-10.			1910-11.			Total Emoluments, including esti- mated value of allowances not received in cash.
	Class.	Sub- division.	Fixed Establishment.			Fixed Establishment.			
			£	s.	d.	£	s.	d.	
NEW TOWN CHARITABLE INSTITUTION AND LAUNCESTON INVALID DEPOT.									
XIV.—NEW TOWN CHARITABLE IN- STITUTION.									
SALARIES.									
Male Officers.									
1									
Superintendent and Storekeeper, also Adminis- trator of Charitable Grants; Superintendent Training School for Boys; Superintendent Invalid Depôt, Launceston; and Secretary Neglected Children Department.....									
									..
2									
Clerk, also Clerk Charitable Department; Clerk Neglected Children Department; and Col- lector for Charitable Institutions .....									
									..
3									
Overseer—with Quarters, Fuel, Light, Uniform, and Ration, £40 .....									
G2			95	0	0	100	0	0	140
4									
Head Warder—with Quarters, Fuel, Light, Uni- form, and Ration, £40 .....									
G3			80	0	0	80	0	0	120
5									
Two Wardsmen—with Board, Fuel, Light, and Uniform, £30 each .....									
G3			130	0	0	140	0	0	200
6									
Male and Female Attendants .....									
			280	0	0	260	0	0	
Female Officers.									
7									
Matron—with Quarters, Fuel and Light, and Servant, £45 .....									
PD	5		100	0	0	100	0	0	145
8									
Head Nurse—with Quarters, Fuel and Light, Uniform and Ration, £20 .....									
G4			40	0	0	40	0	0	60
9									
Nurses—Six at £30 each, with Quarters, Fuel, Light, Uniform, and Ration, £20 each .....									
G4			180	0	0	180	0	0	300
10									
Cook—with Quarters, Fuel, Light, Uniform, and Ration, £20 .....									
G4			52	0	0	52	0	0	72
			957	0	0	952	0	0	
CONTINGENCIES.									
11									
Stores, Stationery, Clothing, and Bedding, Pro- visions, Fuel, Light, Medicines and Medical Comforts, Miscellaneous, including Funeral Expenses, Repairs, including Fencing .....									
			3300	0	0	3000	0	0	
			3300	0	0	3000	0	0	
Total New Town Charitable Institution....									
			£4257	0	0	£3952	0	0	
Estimated Revenue for Services, &c. ....									
			325	0	0	285	0	0	

Appropriation, 1910-11.

CHIEF SECRETARY—*continued.*

	CLASSIFICATION.		1909-10.			1910-11.			Total Emoluments, including estimated value of allowances not received in cash
	Class.	Sub-division.	Fixed Establishment.			Fixed Establishment.			
			£	s.	d.	£	s.	d.	£
<b>XV.—LAUNCESTON INVALID DEPOT.</b>									
SALARIES.									
1 Superintendent—also Administrator of Charitable Institutions, &c . . . . .									
2 Deputy-Superintendent—with Quarters, Fuel, and Light, say £52—also Inquiring Officer, £45, and Collector Charitable Institutions, on Commission, say £34, and Truant Officer, £100, to 30th Sept.—Superintendent Gaol, £110, from 1st Oct. . . . .									
3 Chief Attendant—with Quarters, Fuel, Light, and Ration, say £40 . . . . .	G2		150	0	0				
4 Matron—also Female Warder, Gaol, £57, with Quarters, &c., £30 . . . . .	G4		12	0	0				
5 Nurse—with Quarters, Fuel, Light, and Ration, say £28 . . . . .			40	0	0	750	0	0	
6 Male and Female Attendants . . . . .			96	0	0				
			298	0	0				
CONTINGENCIES.									
7 Stores, Stationery, Clothing, Bedding, Provisions, Fuel, Light, Medicines, Medical Comforts, and Miscellaneous . . . . .			600	0	0				
8 Postal charge, Telegrams, Telephones . . . . .			7	0	0				
9 Printing . . . . .			12	0	0				
			619	0	0				
<i>Total Invalid Depot, Launceston</i> . . . . .			£917	0	0	750	0	0	
<i>Estimated Revenue for Services, &amp;c.</i> . . . . .			80	0	0	70	0	0	
<b>XVI.—NEGLECTED CHILDREN DEPARTMENT.</b>									
CONTINGENCIES.									
1 Rations, Fuel and Light, and Miscellaneous . . . . .			5	0	0	5	0	0	
INDUSTRIAL SCHOOLS AND TRAINING SCHOOL FOR GIRLS.									
<i>Contributions towards Children detained in the under-mentioned Institutions under the provisions of the "Industrial Schools Act":—</i>									
2 Boys' Home, Hobart . . . . .			300	0	0	310	0	0	
3 Industrial School for Females, Hobart . . . . .			250	0	0	250	0	0	
4 St. Joseph's Orphanage, Hobart . . . . .			200	0	0	190	0	0	
5 Industrial School for Females, Launceston, including Teacher's salary, £25 . . . . .			230	0	0	210	0	0	
			980	0	0	960	0	0	
6 MAINTENANCE OF DESTITUTE CHILDREN UNDER THE BOARDING-OUT SYSTEM . . . . .			1600	0	0	1450	0	0	
FREE SCHOOLS, SIX MONTHS ONLY, 1910-11.									
7 Cascades School, Watchorn-street School, Lower Collins-street School, Hobart . . . . .			300	0	0	150	0	0	
8 St. Luke's School, Hobart . . . . .			50	0	0	25	0	0	
			350	0	0	175	0	0	
<i>Total Neglected Children Department.</i> . . . . .			£2935	0	0	£2590	0	0	

## Appropriation, 1910-11.

## CHIEF SECRETARY—continued.

	CLASSIFICATION.		1909-10	1910-11.	Total Emoluments, including estimated value of allowances not received in cash.
	Class.	Sub-division.	Fixed Establishment.	Fixed Establishment.	
			£ s. d.	£ s. d.	£
<b>XVII.—GRANTS TO CHARITABLE INSTITUTIONS.</b>					
1 Benevolent Society, Hobart	}	£1 for every £1 raised by subscription during the year up to the sum voted by Parliament.	200	200	0 0 0
2 Benevolent Society, Launceston			200	200	0 0 0
3 Blind Asylum, Hobart			300	300	0 0 0
4 Braille Society			20	20	0 0 0
‡ Total Grants to Charitable Institutions . . .			<b>£720</b>	<b>£720</b>	<b>0 0 0</b>
<b>XVIII.—GRANTS TO MEDICAL INSTITUTIONS.</b>					
1 General Hospital, Hobart	}	£1 for every £1 raised by subscription or fees during the year up to the sum voted by Parliament.	5000	5000	0 0 0
2 General Hospital, Launceston			5000	5000	0 0 0
3 General Hospital, Hobart			1600	1600	0 0 0
4 General Hospital, Launceston			1600	1600	0 0 0
5 Hospital, Zeehan			500	500	0 0 0
6 Ditto, Queenstown			450	500	0 0 0
7 Ditto, Beaconsfield			200	200	0 0 0
8 Ditto, Latrobe			180	300	0 0 0
9 Ditto, Strahan (for 6 months)			100	50	0 0 0
10 Ditto, Waratah			100	100	0 0 0
11 Ditto, Campbell Town			100	100	0 0 0
12 Homœopathic Hospital, Hobart			250	250	0 0*
13 Ditto, Launceston			200	200	0 0 0
14 Hospital, Tullah			100	100	0 0 0
15 Ditto, Ulverstone			...	100	0 0 0
16 Alexandra Hospital, Hobart			100	100	0 0 0
17 Queen Victoria Hospital, Launceston			100	100	0 0 0
18 Sanatorium, New Town			150	150	0 0 0
19 Hospital, Latrobe			...	700	0 0 0
‡ Total Grants to Medical Institutions . . .			<b>£15,730</b>	<b>£16,650</b>	<b>0 0 0</b>

\* On basis of Subscriptions and Fees raised during the twelve months ending 30th June, 1909.

† Do. Do. Do. 30th June, 1910.

‡ The payment of these moneys to be subject to the furnishing of annual reports and balance-sheets, together with such other information as may be required by the Chief Secretary.



## Appropriation, 1910-11.

## CHIEF SECRETARY—continued.

	CLASSIFICATION.		1909-10.			1910-11.			Total Emoluments, including estimated value of allowances not received in cash.		
	Class.	Sub-division.	Fixed Establishment.			Fixed Establishment.					
			£	s.	d.	£	s.	d.	£	s.	d.
<b>XIX—HOSPITAL FOR THE INSANE, NEW NORFOLK.</b>											
SALARIES.											
1 Superintendent and Medical Officer— with Quarters, Fuel, and Light, say £77 a year..	PA		550	0	0	550	0	0	627	0	0
2 Assistant Medical Officer—Furnished Quarters, Fuel, and Light, £53 .....	PB	4	325	0	0	325	0	0	378	0	0
3 Clerk and Storekeeper .....	C3	3	180	0	0	187	10	0			
4 Clerk (for ten months, 1909-10) .....	C4a		133	6	8	160	0	0			
5 Engineer .....	PC	2	200	0	0	200	0	0			
6 Chief Attendant—Fuel and Light, Uniform, House, Rations, &c. £50 .....	G1		160	0	0	160	0	0	210	0	0
7 First Senior Attendant—Fuel and Light, Uniform, House, Rations, &c., £50 .....	G2		125	0	0	125	0	0	175	0	0
8 Second Senior Attendant—Uniform £5 .....	G2		122	0	0	127	0	0	132	0	0
9 Third Senior Attendant—Uniform and Ration, £20 .....	G3		100	0	0	100	0	0	120	0	0
10 Matron—Furnished Quarters, Fuel, Light, Rations, and Attendance, £63 .....	PC	2	150	0	0	150	0	0	213	0	0
11 Sub-Matron—Furnished Quarters, Fuel, Light, Rations and Attendance, £57 .....	G2		110	0	0	110	0	0	167	0	0
12 Working Farm Overseer—House, Fuel, and Light, £27 .....			100	0	0	105	0	0	132	0	0
13 Chairman of Official Visitors; also Consulting Medical Officer, Railways, £53 .....	P		52	0	0	52	0	0	105	0	0
			2307	6	8	2351	10	0			
ATTENDANTS.											
14 Gatekeeper—Ration and Uniform, £18 8s. ....			80	0	0	85	0	0	103	8	0
15 Carpenter—Uniform, £3 4s. ....			106	0	0	106	0	0	109	4	0
16 Painter and Plumber—Uniform, £3 4s. ....			106	0	0	106	0	0	109	4	0
17 Painter, extra—Uniform, £3 4s. ....			80	0	0	92	0	0	95	4	0
18 Shoemaker—Rations, Lodging, & Uniform, £28 8s. ....			80	0	0	80	0	0	108	8	0
19 Tailor—Uniform, £3 5s. ....			87	0	0	90	0	0	93	5	0
20 Cook—Uniform and Rations, £17 6s. ....			95	0	0	95	0	0	112	6	0
21 Cook, Assistant—Uniform and Rations, £17 6s. ....			90	0	0	80	0	0	97	6	0
22 Baker—Uniform and Rations, £18 8s. ....			..			100	0	0	128	8	0
23 Baker, Assistant—Uniform and Rations, £18 8s. ....			..			26	0	0	44	8	0
24 Gardener—Uniform and Rations, £18 8s. ....			70	0	0	75	0	0	93	8	0
25 Ploughman—Uniform, Ration, & Lodging, £28 8s. ....			70	0	0	70	0	0	98	8	0
26 Milkman—Quarters & Uniform, £16 8s. ....			70	0	0	82	0	0	98	8	0
27 Messenger—Uniform and Ration, £18 8s. ....			75	0	0	80	0	0	98	8	0
28 Senior Night Attendant—Uniform, £3 5s. ....			102	0	0	102	0	0	105	5	0
29 Storeman—Lodging, Ration, & Uniform, £28 8s. ....			..			70	0	0	98	8	0
30 Five Night Attendants, 4 at £87 each, 1 at £92—Uniform, £3 5s. each .....			406	0	0	440	0	0	456	5	0
31 Attendant in Charge of Sick Ward—Rations, Uniform, and Lodging, £28 8s. ....			80	0	0	80	0	0	103	8	0
Carried forward .....			1597	0	0	1859	0	0			

## Appropriation, 1910-11.

CHIEF SECRETARY—*continued.*

	CLASSIFICATION.		1909-10.	1910-11.	Total Emoluments, including estimated value of allowances not received in cash.
	Class.	Sub-division.	Fixed Establishment.	Fixed Establishment.	
			£ s. d.	£ s. d.	
HOSPITAL FOR INSANE, NEW NORFOLK— <i>continued.</i>			2307 6 8	2351 10 0	
<i>Brought forward</i> .....			1597 0 0	1859 0 0	
Fifteen Attendants, from £70 to £80, with Rations and Uniform, £18 14s.....			1090 0 0	..	
32 Eighteen Attendants from £70 to £80, with Uniform and Rations, £18 8s. each .....			..	1290 0 0	1621 4 0
33 Twelve Attendants, from £57 to £70, with Lodging, Uniform, and Rations, £28 8s. each .....			..	792 18 11	1133 14 11
Fifteen Attendants, from £55 to £70, with Lodging, Uniform, and Rations, £28 14s. each .....			992 1 3	..	
34 Eight Attendants, from £56 to £70, with Rations and Uniform, £18 8s. each .....			..	506 6 10	653 10 10
Eight Attendants, from £55 to £65, with Rations and Uniform, £18 14s. each .....			474 6 7	..	
35 Stokers, two, at £102. Uniform, £2 19s. each..			204 0 0	204 0 0	209 18 0
36 Nurses and Laundresses, forty-four, from £35 to £70, with Lodgings, Uniform, and Rations, £28 14s. each .....			..	1914 19 3	3177 15 3
Nurses and Laundresses, forty-three, from £35 to £70, with Lodgings, Uniform, and Rations, £29 1s. each .....			1871 13 3	..	
37 Nurse, one, at £35 (two in 1909-10), for Special Cases, with Lodging, Uniform, and Rations, £28 14s .....			70 0 0	35 0 0	63 14 0
			6299 1 1	6602 5 0	
			8606 7 9	8953 15 0	
ALLOWANCES.					
38 Barber, for duties in connection with Morgue ..			9 0 0	9 0 0	
CONTINGENCIES.					
39 Travelling Expenses of Special Visitors ... ..			30 0 0	20 0 0	
40 Uniforms; Patients' Recreation and Petty Expenses; Provisions; Medical Comforts; Bedding, Clothing, Stores, Stationery, &c.; Fuel and Light; Conveyance of Stores; Medicines; Incidental Expenses, including Furniture and Advertising; Coroner's Inquests and Funeral Expenses; Repairs to Buildings; <i>Locum Tenens</i> for Medical Officers, Engineers, Attendants, Stokers, and Nurses .....			11,510 0 0	11,936 0 0	
41 Postal Charges, Telegrams, and Telephones....			50 0 0	55 0 0	
42 Printing .....			40 0 0	45 0 0	
43 Special Repairs .....			..	600 0 0	
			11,630 0 0	12,656 0 0	
<i>Total Hospital for Insane</i> .....			20,245 7 9	21,618 15 0	
<i>Estimated Revenue for Services</i> .....			4700 0 0	4700 0 0	



Appropriation, 1910-11.

CHIEF SECRETARY—continued.

	CLASSIFICATION,		1909-10.	1910-11.	Total Emoluments, including estimated value of allowances not received in cash.
	Class.	Sub-division.	Fixed Establishment.	Fixed Establishment.	
			£ s. d.	£ s. d.	
<b>XX.—PUBLIC HEALTH DEPARTMENT.</b>					
<b>SALARIES.</b>					
1 Chief Health Officer, also Chief Quarantine Officer .....	PA		600 0 0	600 0 0	
2 Secretary ; also Under-Secretary, &c.....			..	..	
3 Medical Officer for all Government Departments, Hobart .....			100 0 0	100 0 0	
4 Inspector, Sanitary .....	PC4		220 0 0	230 0 0	
5 Clerk (two months, 1910-11, at £150) .....	C 4a		140 0 0	25 0 0	
6 Clerk and Sanitary Inspector .....	C 4b		95 0 0	120 0 0	
			1155 0 0	1075 0 0	
<b>ALLOWANCES.</b>					
7 Caretaker Isolation Hospital, Kings Meadows ..			30 0 0	30 0 0	
			30 0 0	30 0 0	
<b>CONTINGENCIES.</b>					
8 Travelling Expenses .....			200 0 0	150 0 0	
9 Contribution to Cost of Administering Public Health and Vaccination Acts.....			320 0 0	300 0 0	
10 Postal Charges, Telegrams, and Telephones....			75 0 0	45 0 0	
11 Printing .....			50 0 0	40 0 0	
			645 0 0	535 0 0	
<i>Total Public Health Department .....</i>			1830 0 0	1640 0 0	
<i>Estimated Revenue for Services to Commonwealth..</i>			..	250 0 0	
<b>TOTAL CHARITABLE AND MEDICAL INSTITUTIONS</b>			51,511 17 9	52,851 15 0	

## Appropriation, 1910-11.

CHIEF SECRETARY—*continued.*

	CLASSIFICATION.		1909-10.	1910-11.	Total Emoluments, including estimated value of allowances not received in cash.
	Class.	Sub-division.	Fixed Establishment.	Fixed Establishment.	
			£ s. d.	£ s. d.	
<b>XXI.—MAGAZINES AND EXPLOSIVES.</b>					
SALARIES.					
1 Chief Inspector; also Chief Inspector Machinery, £335 .....			..	..	
2 Inspector, Southern District, with Quarters, Fuel, Light, and Water, say £30 .....	G2		110 0 0	110 0 0	140
3 Inspector, Northern District; also Caretaker Rifle Range, with Quarters, value £30. ....			..	..	30
4 Magazine Keeper, Strahan .....			50 0 0	50 0 0	
CONTINGENCIES.					
5 Travelling Expenses .....			15 0 0	15 0 0	
6 Stationery and Stores, Labour, Fuel, Light, Repairs, and Miscellaneous .....			60 0 0	40 0 0	
7 Postal Charges, Telegrams, and Telephones ..			15 0 0	15 0 0	
8 Printing .....			8 0 0	5 0 0	
			98 0 0	75 0 0	
<i>Total Magazines and Explosives</i> ....			258 0 0	£235 0 0	
<i>Estimated Revenue for Storage, &amp;c.</i> .....			500 0 0	600 0 0	
<b>XXII.—PUBLIC SERVICE BOARD.</b>					
SALARIES.					
Allowances to Members of Board (Chairman, £200; One Member at £50, and One Member at £25) .....			275 0 0	275 0 0	
Secretary to Board and Government Shorthand Writer .....	C3	5	217 10 0	225 0 0	
			492 10 0	500 0 0	
CONTINGENCIES.					
Travelling Expenses .....			10 0 0	10 0 0	
Stationery, Examiners' Fees, Clerical Assistance, and Miscellaneous Expenses .....			30 0 0	20 0 0	
Printing and Advertising .....			20 0 0	20 0 0	
Postal Charges, Telegrams, and Telephones....			10 0 0	10 0 0	
			70 0 0	60 0 0	
			562 10 0	£560 0 0	
<i>Estimated Revenue</i> .....			7 0 0	7 0 0	

## Appropriation, 1910-11.

## CHIEF SECRETARY—continued.

	CLASSIFICATION		1909-10.			1910-11.			Total Emoluments, including estimated value of allowances not received in cash.
	Class.	Sub-division.	Fixed Establishment.			Fixed Establishment.			
XXIII.—MISCELLANEOUS.									
			£	s.	d.	£	s.	d.	£
1			*500	0	0	*500	0	0	
2			†150	0	0	†150	0	0	
3			*800	0	0	*800	0	0	
4			50	0	0	55	0	0	
5			†300	0	0	†300	0	0	
6			150	0	0	150	0	0	
7									
7			300	0	0	300	0	0	
8									
8			900	0	0	1400	0	0	
			500	0	0	See XLI			
9									
9			20	0	0	20	0	0	
<i>In aid of Tourist Associations—</i>									
10			300	0	0	300	0	0	
11			300	0	0	300	0	0	
Grants conditional on 3 members of each Committee being nominated by Government.									
12			200	0	0	200	0	0	
13			400	0	0	400	0	0	
14			150	0	0	150	0	0	
15			30	0	0	40	0	0	
16			60	0	0	70	0	0	
17			650	0	0	656	0	0	
18			120	0	0	120	0	0	
19			30	0	0	30	0	0	
Immigration League, Launceston (on the understanding that the balance, £49 12s. 6d., of the amount provided in "The Surplus Revenue Act, 1907," in aid of Immigration on the £ for £ system, upon conditions to be imposed by the Chief Secretary, shall lapse)...									
20			100	0	0	..			
			..			650	0	0	
<i>Total Miscellaneous</i>			6010	0	0	£6591	0	0	
<i>Contribution by Federal Government for Analysis of Articles for Commonwealth Departments</i>			250	0	0	250	0	0	
*Reserved by Law, 49 Vict.									
			£1300	0	0				
†			150	0	0				
‡			300	0	0				
†			4841	0	0				
			£6591	0	0				

## Appropriation, 1910-11.

**Treasurer.**

		CLASSIFICATION.		1909-10.	1910-11.	Total Emoluments, including estimated value of allowances not received in cash.
		Class.	Sub-division.	Fixed Establishment.	Fixed Establishment.	£ s. d.
<b>XXIV.—TREASURY.</b>						
<b>SALARIES.</b>						
1	Under-Treasurer also acting Secretary Public Debts Sinking Fund 1910-11, £50, (and Permanent Head Commonwealth Sub-Treasury)	C1		£ 550 0 0	£ 550 0 0	£ 600 0 0
2	Accountant (also Commonwealth Sub-Treasury); also Secretary Public Debts Sinking Fund, £50, and Trustee Agricultural Bank, £26, 1909-10	C1		400 0 0	380 0 0	
3	Receiver and Paymaster (also Commonwealth Sub-Treasury)	C2	6	360 0 0	360 0 0	
4	Cashier, Pay Branch	C2	4	320 0 0	320 0 0	
5	Cashier, Revenue Branch	C2	4	320 0 0	320 0 0	
6	Clerk	C2	1	260 0 0	260 0 0	
7	Clerk	C3	5	232 10 0	225 0 0	
8	Clerk	C3	2	187 10 0	195 0 0	
9	Clerk	C3	2	195 0 0	180 0 0	
10	Clerk	C3	1	160 0 0	160 0 0	
11	Clerk	C4a		140 0 0	130 0 0	
12	Clerk	C4a		120 0 0	130 0 0	
13	Clerk	C4a		120 0 0	86 5 0	
14	Clerk	C4b		71 5 0	45 0 0	
15	Clerk	C4b		45 0 0	41 0 0	
				3481 5 0	3382 5 0	
<b>IMPERIAL PENSIONS BRANCH.</b>						
16	Paymaster; also Actuary State Savings Bank, £230, and Manager Agricultural Bank	C2	6	100 0 0	100 0 0	£ 330 0 0
				3581 5 0	3482 5 0	
<b>CONTINGENCIES.</b>						
17	Stationery and Miscellaneous Expenses including Clerical Assistance, Overtime, and Purchase of Type-writer			100 0 0	140 0 0	
18	Printing			80 0 0	80 0 0	
19	Postal Charges, Telegrams, and Telephones			325 0 0	340 0 0	
				505 0 0	560 0 0	
				4086 5 0	4042 5 0	
<b>STORES BRANCH.</b>						
Salaries—						
20	Inspector of Stores and Secretary Board of Tenders	C2	4	320 0 0	320 0 0	
21	Chief Clerk, also Assistant Returning Officer, £8	C3	5	232 10 0	240 0 0	£ 248 0 0
22	Storekeeper (with Quarters, Fuel, and Light, say £30)	C4a		130 0 0	130 0 0	£ 160 0 0
23	Clerk	C4b		48 6 8	62 10 0	
24	Storeman	G3		125 0 0	130 0 0	
				855 16 8	882 10 0	
Contingencies—						
25	Stationery, Stores, Conveyance, and Miscellaneous Expenses, including Clerical Assistance			70 0 0	80 0 0	
26	Travelling Expenses			30 0 0	30 0 0	
27	Postal Charges, Telegrams, and Telephones			35 0 0	40 0 0	
28	Printing			25 0 0	25 0 0	
				160 0 0	175 0 0	
				1015 16 8	1057 10 0	
<i>Total Treasury (including Stores)..</i>				5102 1 8	£5099 15 0	
<i>Estimated Revenue for Services . . . . .</i>				585 0 0	575 0 0	

Appropriation, 1910-11.

TREASURER—continued.

	CLASSIFICATION.		1909-10.			1910-11.			Total Emoluments, including estimated value of allowances not received in cash.
	Class.	Sub-division.	Fixed Establishment.			Fixed Establishment.			
<b>XXV.—OFFICE OF TAXES.</b>									
<b>SALARIES.</b>									
1 Commissioner and Collector, also Trustee Agricultural Bank, £26	C1		£	s.	d.	£	s.	d.	£
2 District Deputy-Commissioner, Launceston	C2	6	475	0	0	475	0	0	501
3 Chief Clerk	C2	5	330	0	0	340	0	0	
4 Clerk	C3	5	320	0	0	330	0	0	
5 Clerk	C3	5	232	10	0	240	0	0	
6 Clerk	C3	4	202	10	0	210	0	0	
7 Clerk	C3	3	187	10	0	195	0	0	
8 Clerk	C3	3	187	10	0	195	0	0	
9 Clerk, also Assistant Returning Officer, say £5	C3	3	215	0	0	215	0	0	
10 Clerk	C3	3	210	0	0	210	0	0	215
11 Clerk	C3	1	195	0	0	195	0	0	
12 Clerk	C3	1	180	0	0	160	0	0	
13 Clerk	C3		180	0	0	180	0	0	
14 Clerk	C4 <sub>a</sub>		180	0	0	180	0	0	
15 Clerk (3 months at £160, 9 months at £120, 1910-11)	C4		150	0	0	160	0	0	
16 Clerk	C4 <sub>a</sub>		130	0	0	130	0	0	
17 Clerk	C4 <sub>b</sub>		71	5	0	86	5	0	
	C4 <sub>b</sub>		45	0	0	36	13	4	
			<b>3491</b>	<b>5</b>	<b>0</b>	<b>3537</b>	<b>18</b>	<b>4</b>	
<b>CONTINGENCIES.</b>									
18 Travelling Expenses			30	0	0	30	0	0	
19 Stationery, Cost of Collection of Rates and Taxes, Advertising, Incidental Expenses, &c.			240	0	0	240	0	0	
20 Clerical Assistance (including overtime) and Expenses in connection with Preparation of New Valuation Rolls, and gratuity to Chief Valuer, £100			5000	0	0	4600	0	0	
21 Printing Valuation Rolls, &c.			600	0	0	600	0	0	
22 Postal charges, Telegrams, and Telephones			600	0	0	600	0	0	
			<b>6470</b>	<b>0</b>	<b>0</b>	<b>6070</b>	<b>0</b>	<b>0</b>	
<i>Total Office of Taxes</i>			<b>9961</b>	<b>5</b>	<b>0</b>	<b>9607</b>	<b>18</b>	<b>4</b>	
<b>XXVI.—PRINTING DEPARTMENT.</b>									
<b>SALARIES.</b>									
1 Government Printer	PA		500	0	0	500	0	0	
2 Overseer	G1		265	0	0	265	0	0	
3 Accountant	C3	5	217	10	0	225	0	0	
4 Clerk	C4 <sub>b</sub>		110	0	0	110	0	0	
5 Foreman	G2		195	0	0	200	0	0	
6 Foreman Machinist	G2		174	0	0	174	0	0	
Government Pamphleteer and Reviser of State Publications			250	0	0	See XXVIII.			
			<b>1711</b>	<b>10</b>	<b>0</b>	<b>1474</b>	<b>0</b>	<b>0</b>	
7 Wages to Establishment			7250	0	0	7500	0	0	
<b>CONTINGENCIES.</b>									
8 Stationery, Stores, Fuel and Light, New Type, Fittings, Repairs to Machinery, Presses, &c., Petty Expenses, &c., including provision for annual picnic of employes			3600	0	0	3800	0	0	
9 Postal charges, Telegrams, and Telephones			125	0	0	115	0	0	
10 Printing			50	0	0	50	0	0	
11 New Plant			800	0	0	500	0	0	
			<b>4575</b>	<b>0</b>	<b>0</b>	<b>4465</b>	<b>0</b>	<b>0</b>	
<i>Total Printing Department</i>			<b>13,536</b>	<b>10</b>	<b>0</b>	<b>13,439</b>	<b>0</b>	<b>0</b>	
<i>Estimated Revenue for Services</i>			<b>15,000</b>	<b>0</b>	<b>0</b>	<b>14,500</b>	<b>0</b>	<b>0</b>	

## Appropriation, 1910-11.

## TREASURER—continued.

	CLASSIFICATION.		1909-10.			1910-11.			Total Emoluments, including estimated value of allowances not received in cash.
	Class.	Sub-division.	Fixed Establishment.			Fixed Establishment.			
			£	s.	d.	£	s.	d.	£
<b>XXVII.—STATE SAVINGS BANK.</b>									
<b>SALARIES.</b>									
1 Actuary and Secretary to Trustees, also Paymaster Imperial Pensions, £100, and Manager Agricultural Bank .....	C2	6	220	0	0	230	0	0	<b>330</b>
2 Clerk and Accountant .....	C3	4	202	10	0	210	0	0	
3 Teller .....	C3	2	187	10	0	195	0	0	
4 Clerk and Ledger-keeper .....	C3	2	120	0	0	130	0	0	
5 Clerk .....	C4a		110	0	0	120	0	0	
6 Clerk .....	C4a		95	0	0	110	0	0	
7 Clerk .....	C4b		63	15	0	78	15	0	
8 Clerk .....	C4b		50	0	0	65	0	0	
			1048	15	0	1138	15	0	
<b>CONTINGENCIES.</b>									
9 Stationery, Printing, and Sundries .....			200	0	0	250	0	0	
10 Commission to Postal Department on Country Business .....			1200	0	0	1050	0	0	
11 Postal charges, Telegrams, and Telephones ...			200	0	0	300	0	0	
12 Expenses opening new Ledgers and calculating Interest .....			50	0	0	50	0	0	
Gratuity to Mr. E. H. Smith, for services in connection with introduction of new system of accounts .....			25	0	0	..			
			1675	0	0	1650	0	0	
<i>Total State Savings Bank</i> .....			2723	15	0	2788	15	0	
<i>Profit on Savings Bank</i> .....			4154	0	0	4150	0	0	
<b>XXVIII.—MISCELLANEOUS.</b>									
1 Commission and all Charges in London for payment of Principal and Interest on Inscribed Stock, Debentures, and Treasury Bills .....			1000	0	0	1000	0	0	
2 Cost of Exchange and Stamp Duty on Remittances to London and elsewhere, and discounting Drafts .....			200	0	0	250	0	0	
3 For payment of Premiums on Guarantee Policies for Officers entrusted with collection of Government moneys .....			70	0	0	50	0	0	
4 "The Merchant Ships Officers' Examination Act," expenses, &c. ....			60	0	0	60	0	0	
5 Salary of Government Pamphleteer and Reviser of State Publications .....			See Printing Department.			250	0	0	
6 Allowance to Mr. M. McDonough, one of the discoverers of Mount Lyell Mine .....			100	0	0	100	0	0	
7 Allowance to Mr. G. Renison Bell, discoverer of tin on North-East Coast .....			100	0	0	100	0	0	
8 Allowance to Mr. G. Meredith one of the discoverers of Tin at Mt. Heemskirk .....			..			50	0	0	
9 Allowance to Mr. Owen Meredith, one of the discoverers of Tin at Mt. Heemskirk .....			..			50	0	0	
<i>Total Miscellaneous</i> .....			1530	0	0	1910	0	0	



Appropriation, 1910-11.

**Attorney-General.**

	CLASSIFICATION.		1909-10.	1910-11.	Total Emoluments, including estimated value of allowances not received in cash.
	Class.	Sub-division.	Fixed Establishment.	Fixed Establishment.	
<b>Judicial Departments.</b>					
<b>XXIX.—ATTORNEY-GENERAL.</b>					
SALARIES.					
Secretary to Law Department; also Assistant Law Officer, &c. ....	PA		£ 360 0 0	See XXXI.	£ s. d.
Clerk to Attorney-General and Law Department; also Secretary to Board of Examiners under Legal Practitioners Act, £2 2s. ....	C3	1	160 0 0	...	
1 Secretary to Attorney-General; also Secretary Board of Examiners, £2 2s. ....	C3	3	...	180 0 0	182 2 0
2 Clerk .....	C4b		See XXXI.	61 5 0	
CONTINGENCIES.					
3 Travelling Expenses of Law Officers.....			520 0 0	241 5 0	
4 Stationery, Miscellaneous, and Incidental Expenses, Clerical Assistance, Defending Pauper Prisoners, Law Books, Binding, Newspapers, Advertising .....			50 0 0	50 0 0	
5 Printing .....			100 0 0	100 0 0	
6 Postal Charges, Telegrams, and Telephones....			60 0 0	50 0 0	
			35 0 0	40 0 0	
			245 0 0	240 0 0	
<i>Total Attorney-General's Department....</i>			£765 0 0	481 5 0	
<b>XXX.—PARLIAMENTARY DRAFTSMAN.</b>					
SALARY.					
1 Parliamentary Draftsman; also Returning Officer, £8 10s., and member Mining Board, £25 .....	PA		£360 0 0	360 0 0	393 10 0
<b>XXXI.—SOLICITOR-GENERAL.</b>					
SALARIES.					
1 Solicitor-General; also Chairman Mining Board, £50, and member Public Service Board, £25 .....	PA		600 0 0	600 0 0	675 0 0
2 Clerk to the Solicitor-General .....	PD	6	160 0 0	160 0 0	
3 Crown Solicitor; also Registrar Building Societies Fees, say £5 5s. ....			See XXIX.	372 10 0	377 15 0
4 Clerk of the Peace; also Clerk in Charge Crown Solicitor's Office .....	PB	1	250 0 0	260 0 0	
5 Clerk .....			47 10 0	See XXIX.	
			1057 10 0	1392 10 0	
CONTINGENCIES.					
6 Stationery, Clerical and other Assistance .....			15 0 0	15 0 0	
7 Printing .....			20 0 0	20 0 0	
8 Postal Charges, Telegrams, and Telephones....			30 0 0	35 0 0	
			65 0 0	70 0 0	
<i>Total Solicitor-General's Department ..</i>			1122 10 0	1462 10 0	
<i>Estimated Revenue for Services rendered.</i>					
Reserved by Law .....			£450 0 0		
To be voted. ....			1012 10 0		
			£1462 10 0		

## Appropriation, 1910-11.

## ATTORNEY-GENERAL—continued.

	CLASSIFICATION.		1909-10.			1910-11.			Total Emoluments, including estimated value of allowances not received in cash.
	Class.	Sub-division.	Fixed Establishment.			Fixed Establishment.			
			£	s.	d.	£	s.	d.	£
<b>XXXII.—THE JUDGES.</b>									
<b>SALARIES.</b>									
1 Chief Justice .....			1500	0	0	1500	0	0	
2 Puisne Judge .....			1200	0	0	1200	0	0	
3 Puisne Judge .....			1200	0	0	1200	0	0	
4 Judges' Associate .....			175	0	0	175	0	0	
			4075	0	0	4075	0	0	
<b>CONTINGENCIES.</b>									
5 Travelling Expenses of Judges and Officers attending the Circuit Courts and Incidental Expenses .....			325	0	0	250	0	0	
6 Stationery, and Advertising Claims to Grants .....			10	0	0	14	0	0	
7 Postal Charges, Telegrams, and Telephones .....			21	0	0	20	0	0	
8 Printing .....			20	0	0	20	0	0	
			376	0	0	304	0	0	
<i>Total Judges</i> .....			4451	0	0	4379	0	0	
Reserved by Law (18 Vict. No. 17 & 50 Vict. No. 36) .....			£3900	0	0				
To be voted .....			479	0	0				
			£4379	0	0				
<b>XXXIII.—SUPREME COURT, REGISTRY OF DEEDS, PROBATE DUTIES, AND STAMP DUTIES.</b>									
<b>SALARIES.</b>									
1 Registrar of Supreme Court, Registrar of Deeds, Collector of Probate Duties and Commissioner and Collector of Stamp Duties; also District Registrar, High Court. Fees, say £75 .....	PA		550	0	0	550	0	0	625
2 Chief Clerk; also Returning Officer, £40 .....	C2	5	330	0	0	340	0	0	380
3 Clerk; also Clerk to Deputy Returning Officer, £12 .....	C3	4	217	10	0	195	0	0	207
4 Clerk .....	C3	3	170	0	0	180	0	0	
5 Clerk .....	C4a		110	0	0	160	0	0	
6 Clerk .....	C4b		65	0	0	80	0	0	
			1442	10	0	1505	0	0	
<b>CONTINGENCIES.</b>									
7 Stationery, Incidental Expenses, Allowance for Spoiled Stamps, &c. ....			50	0	0	60	0	0	
8 Printing .....			95	0	0	75	0	0	
9 Postal Charges, Telegrams, and Telephones .....			90	0	0	90	0	0	
10 Commission on Sale of Revenue Stamps at Official Post Offices .....			80	0	0	80	0	0	
			315	0	0	305	0	0	
<i>Total Supreme Court</i> .....			1757	10	0	1810	0	0	

## Appropriation, 1910-11.

## ATTORNEY-GENERAL—continued.

XXXIV.—LANDS' TITLES.	CLASSIFICATION.		1909-10.	1910-11.	Total Emoluments, including estimated value of allowances not received in cash.
	Class.	Sub-division.	Fixed Establishment.	Fixed Establishment.	
SALARIES.			£ s. d.	£ s. d.	£
<i>Professional Staff.</i>					
1 Recorder of Titles, Collector of Stamp Duties, Registrar of Public Trusts, and Commissioner of Public Debts Sinking Fund; also Trustee Agricultural Bank, £26 .....	PA		600 0 0	600 0 0	626
2 Solicitor to Lands' Titles Commissioners .....	PB	2	272 10 0	285 0 0	
3 Deputy-Recorder of Titles, Chief Clerk, and Draftsman .....	PA		385 0 0	385 0 0	
4 Draftsman .....	PC	5	260 0 0	260 0 0	
5 Draftsman .....	PC	3	210 0 0	220 0 0	
6 Draftsman .....	PD	6	160 0 0	160 0 0	
7 Draftsman .....	PD		100 0 0	120 0 0	
<i>Clerical Staff.</i>					
Accountant, Receiving and Corresponding Clerk (also Returning Officer, £16 in 1909-10)	C3	5	240 0 0	..	
8 Accountant, Receiving, and Corresponding Clerk, 1 month at £180, 10 months at £210			..	190 0 0	
9 Engrossing Clerk .....	C4a		190 0 0	190 0 0	
10 Clerk (Indexing), 1 month at £160, 11 months at £150 .....	C3	1	160 0 0	150 16 8	
11 Clerk .....	C4a		160 0 0	160 0 0	
12 Clerk, 1 month at £140, 10 months at £150 ..	C4a		130 0 0	136 13 4	
13 Clerk .....	C4b		56 5 0	71 5 0	
14 Clerk .....	C4b		26 5 3	52 0 0	
CONTINGENCIES.			2950 0 3	2980 15 0	
15 Stationery, Advertising, and Miscellaneous—including Travelling Expenses .....			210 0 0	210 0 0	
16 Fees for Inspection of Surveys .....			50 0 0	20 0 0	
17 Printing .....			200 0 0	200 0 0	
18 Postal Charges, Telegrams, and Telephones ..			90 0 0	90 0 0	
<i>Total Lands' Titles Department .....</i>			550 0 0	520 0 0	
<i>Estimated Revenue for Services .....</i>			3500 0 3	3500 15 0	
			6000 0 0	6000 0 0	
XXXV.—SHERIFF, &c.					
<i>Hobart.</i>					
SALARIES.					
1 Sheriff, Curator of Intestate Estates, Clerk of Supreme Court, Registrar of Supreme Court in Bankruptcy and Local Courts Act Jurisdiction, Deputy-Registrar of Deeds, and Collector of Stamp Duties; also Commissioner of Supreme Court, £10; Member of Mining Board, £25; and Deputy-Marshall, High Court .....	C1		425 0 0	425 0 0	480
2 Clerk .....	C3	5	225 0 0	232 10 0	
Clerk .....	C4a		160 0 0	..	180
3 Sheriff's Officer, also Bailiff of Court of Requests and Collector for Office of Taxes, £20 .....	C4a		165 0 0	165 0 0	185
4 Courthouse Keeper and Crier of the Court, from 1 October, 1910 .....	G2		170 0 0	180 0 0	
5 Crier of the Court, for 3 months, 1910-1911 .....	G3		100 0 0	25 0 0	
<i>Carried forward .....</i>			1245 0 0	1027 10 0	

## Appropriation, 1910-11.

## ATTORNEY-GENERAL—continued.

	CLASSIFICATION.		1909-10.			1910-11.			Total Emoluments, including estimated value of allowances not received in cash.
	Class.	Sub-division.	Fixed Establishment.			Fixed Establishment.			
			£	s.	d.	£	s.	d.	
<b>SHERIFF, &amp;c.—continued.</b>									
<i>Brought forward</i> .....			1245	0	0	1027	10	0	
<i>Launceston.</i>									
6 Deputy-Sheriff—also Registrar Court of Requests, &c., £155, and Commissioner Supreme Court, £25 .....	C2	3	100	0	0	100	0	0	280 0 0
7 Sheriff's Officer and Clerk, and Bailiff of Court of Requests .....	C4a		160	0	0	160	0	0	
8 Courthouse Keeper—also Crier of the Courts, with Quarters, Fuel, Light, and Uniform, say £33 .....	G2		100	0	0	100	0	0	133 0 0
			360	0	0	360	0	0	
<b>ALLOWANCES.</b>									
9 Bailiff, Hobart, for Assistants .. . . . .			60	0	0	60	0	0	
10 Bailiff, Launceston, for Assistant .....			40	0	0	40	0	0	
			100	0	0	100	0	0	
<b>CONTINGENCIES.</b>									
11 Stationery, Incidental and Unforeseen Expenses, including purchase typewriting machine.....			30	0	0	50	0	0	
12 Travelling Expenses of Sheriff and Officers .....			10	0	0	10	0	0	
13 Printing .....			30	0	0	35	0	0	
14 Postal Charges, Telegrams, and Telephones....			50	0	0	50	0	0	
15 Assistance for Crier of Court .....			..			25	0	0	
			120	0	0	170	0	0	
<i>Total Sheriff's Department..</i>			1825	0	0	1657	10	0	
<i>Estimated Revenue for Services .....</i>			100	0	0	500	0	0	

## Appropriation, 1910-11.

## ATTORNEY-GENERAL—continued.

	CLASSIFICATION.		1909-10.	1910-11.	Total Emoluments, including estimated value of allowances not received in cash.
	Class.	Sub-division.	Fixed Establishment.	Fixed Establishment.	
			£ s. d.	£ s. d.	£ s. d.
<b>XXXVI.—COURTS OF REQUESTS AND COURT OF BANKRUPTCY, LAUNCESTON.</b>					
SALARIES.					
1 Commissioner of Courts of Requests, and Police Magistrate, Launceston and North-Eastern Division; also Warden of Mines, £150 . . . .	PA		400 0 0	400 0 0	550 0 0
2 Registrar of Courts of Requests and Bankruptcy, Registrar of Supreme Court in its Local Courts Act Jurisdiction, Clerk of the Peace, and Collector Stamp Duties; also Deputy-Sheriff, Launceston, £100, and Commissioner Supreme Court, £25 . . . . .	C2	3	147 10 0	155 0 0	280 0 0
3 Office Cleaner . . . . .			20 0 0	20 0 0	
			567 10 0	575 0 0	
CONTINGENCIES.					
4 Stationery, Law Books, and Incidental Expenses			15 0 0	15 0 0	
5 Travelling Expenses of Commissioner . . . . .			25 0 0	15 0 0	
6 Postal Charges, Telegrams, and Telephones . . .			30 0 0	30 0 0	
7 Printing . . . . .			5 0 0	5 0 0	
			75 0 0	65 0 0	
<i>Total General Sessions, Court of Requests, and Court of Bankruptcy, Launceston . . .</i>			642 10 0	640 0 0	
<b>TOTAL JUDICIAL DEPARTMENTS..</b>			<b>15,548 10 3</b>	<b>14,291 0 0</b>	
Reserved by Law, Judicial Departmentments . . . . .			£4350 0 0		
To be voted . . . . .			9941 0 0		
			<b>£14,291 0 0</b>		

## Appropriation, 1910-11.

ATTORNEY-GENERAL—*continued.*

	CLASSIFI- CATION.		1909-10.	1910-11.	Total Emoluments, including esti- mated value of allowances not received in cash.
	Class.	Sub- division.	Fixed Establishment.	Fixed Establishment.	
			£ s. d.	£ s. d.	
<b>Magistracy and Courts of Requests.</b>					
<b>XXXVII.—SOUTHERN DIVISION.</b>					
SALARIES.					
1 Police Magistrate and Commissioner Court of Requests, Hobart, and Southern Division....	PA		450 0 0	450 0 0	
2 Bench Clerk, and Clerk Petty Sessions; also Electoral Registrar, say £10 .....	C3	5	225 0 0	232 10 0	242 10 0
3 Registrar Court of Requests .....	C3	4	217 10 0	225 0 0	
4 Information Clerk .....	C3	1	150 0 0	160 0 0	
			1042 10 0	1067 10 0	
CONTINGENCIES.					
5 Stationery, Stores, Fuel and Light, Cleaning, Sanitary Service, Miscellaneous, and Rent of Courthouse, Geeveston .....			35 0 0	35 0 0	
6 Travelling Expenses, Police Magistrate and Commissioner, Police Clerk, &c. ....			40 0 0	40 0 0	
7 Postal Charges, Telegraphs, and Telephones..			50 0 0	40 0 0	
8 Printing .....			10 0 0	10 0 0	
			135 0 0	125 0 0	
<i>Total Southern Division</i> .....			1177 10 0	1192 10 0	

Appropriation, 1910-11.

ATTORNEY-GENERAL—continued.

	CLASSIFICATION.		1909-10.	1910-11.	Total Emoluments, including estimated value of allowances not received in cash.
	Class.	Sub-division.	Fixed Establishment.	Fixed Establishment.	
			£ s. d.	£ s. d.	
<b>MAGISTRACY, &amp;c.—continued.</b>					
<b>XXXVIII.—NORTHERN DIVISION.</b>					
SALARIES.					
1 Police Magistrate; also Commissioner Court of Requests, Launceston, Northern and North-Eastern Districts, £400, and Warden of Mines, £150 .....	C3	3	..	..	
2 Bench Clerk and Commissioner Supreme Court, say £3 .....			240 0 0	240 0 0	248 0 0
			240 0 0	240 0 0	
			10 0 0	10 0 0	
CONTINGENCIES.					
3 Stationery, Stores, Fuel and Light, and Miscellaneous .....			5 0 0	5 0 0	
4 Postal Charges and Telegrams .....			5 0 0	5 0 0	
5 Printing .....			20 0 0	15 0 0	
<i>Total Northern Division</i> .....			260 0 0	255 0 0	
<b>XXXIX —NORTH-WESTERN DIVISION.</b>					
SALARIES.					
1 Police Magistrate, and Commissioner of Court of Requests, North-Western Division, Collector of Stamp Duties and Coroner; also Assistant Returning Officer, say £5 .....	PA		400 0 0	400 0 0	405 0 0
Police Clerk, Registrar Courts of Requests, General Sessions, and Supreme Court, Devonport; and Registrar Births, Deaths, and Marriages, say £20 (two months only, 1909-1910).....		C4a		32 3 4	..
			432 3 4	400 0 0	
CONTINGENCIES.					
2 Travelling Expenses, Police Magistrate and Commissioner .....			60 0 0	60 0 0	
3 Stationery and Stores, Fuel and Light, Cleansing, Rents, Water Rates, and Miscellaneous .....			75 0 0	75 0 0	
4 Postal Charges, Telegrams, and Telephone .....			24 0 0	15 0 0	
5 Printing .....			5 0 0	5 0 0	
			164 0 0	155 0 0	
<i>Total District of East Devon</i> .....			596 3 4	555 0 0	

## Appropriation, 1910-11.

## ATTORNEY-GENERAL—continued.

	CLASSIFICATION.		1909-10.			1910-11.			Total Emoluments, including estimated value of allowances not received in cash.
	Class.	Sub-division.	Fixed Establishment.			Fixed Establishment.			
			£	s.	d.	£	s.	d.	
<b>MAGISTRACY—continued.</b>									
<b>XL.—WESTERN DIVISION.</b>									
<b>DISTRICT OF MACQUARIE.</b>									
1 Police Magistrate and Commissioner of Courts of Requests, Zeehan, Queenstown, Gormanston, Strahan, and Waratah; also Warden of Mines, £100; Coroner and Collector of Stamp Duties; also Returning Officer, £48	PA		300	0	0	300	0	0	448
			300	0	0	300	0	0	
<b>CONTINGENCIES.</b>									
2 Travelling Expenses of Police Magistrate and Commissioner .....			50	0	0	70	0	0	
3 Miscellaneous, Cleaning, Sanitary Service, Stationery and Stores, Fuel and Light .....			80	0	0	80	0	0	
4 Postal charges, Telegrams, and Telephones ....			25	0	0	12	0	0	
5 Printing .....			5	0	0	3	0	0	
			160	0	0	165	0	0	
<i>Total Western Division</i> .....			460	0	0	465	0	0	
			2493	13	4	2467	10	0	
<b>XLI.—MISCELLANEOUS.</b>									
1 Crown Witnesses' Expenses, Prisoners' Witnesses' Expenses on Criminal Trials, and Jurors' Expenses in Civil and Criminal Cases .....			1110	0	0	1200	0	0	
2 Incidental Expenses of Jurors .....			15	0	0	15	0	0	
3 Expenses in connection with Coroners' Inquests			See XXIII.			600	0	0	
4 Stationery and Stores for Bailiffs, Courts of Requests, and General Sessions .....			20	0	0	10	0	0	
5 Printing for Bailiffs, Courts of Requests, and General Sessions .....			..			10	0	0	
6 Supplying Courthouses with Sessional Parts of Acts of Parliament and Stops' Statutes .....			50	0	0	25	0	0	
Remuneration to Registrars in lieu of Fees directed by "The Local Courts Act, 1896," to be paid into the Consolidated Revenue Fund			90	0	0	..			
<i>Total Miscellaneous</i> .....			1285	0	0	1860	0	0	



## Appropriation, 1910-11.

## ATTORNEY-GENERAL—continued.

	CLASSIFICATION.		1909-10.	1910-11.	Total Emoluments, including estimated value of allowances not received in cash.
	Class.	Sub-division.	Fixed Establishment.	Fixed Establishment.	
			£ s. d.	£ s. d.	
<b>XLII.—POLICE DEPARTMENT.</b>					
<b>SALARIES.</b>					
1 Commissioner of Police .....	C1		450 0 0	450 0 0	
Accountant; also Secretary Provident Fund....	C2	1	270 0 0	..	
2 Chief Clerk and Accountant; also Secretary Provident Fund .....	C2		232 10 0	260 0 0	
3 Clerk .....	C4a		140 0 0	150 0 0	
4 Clerk .....	C4b		45 0 0	95 0 0	
5 Clerk (from 1st October, say at £130) .....	C4a		..	100 0 0	
			1137 10 0	1055 0 0	
6 Superintendents, Inspectors, Sub-Inspectors, Sergeants, Constables, and Special Constables			30,436 2 6	31,109 11 8	
<b>ALLOWANCES.</b>					
7 Horse and Bicycle Allowances .....			2400 0 0	2400 0 0	
8 Personal Allowances for special work .....			240 0 0	240 0 0	
			2640 0 0	2640 0 0	
<b>CONTINGENCIES.</b>					
9 Stationery and Stores .....			70 0 0	90 0 0	
10 Uniforms .....			1200 0 0	1350 0 0	
11 Rent of Buildings .....			100 0 0	70 0 0	
12 Fuel and Light, Head Office and Stations .....			125 0 0	125 0 0	
13 Travelling Expenses, Expenses of Inspection, and Conveyance of Police on Railways and Tramways and Ferry (Mersey).....			1700 0 0	1700 0 0	
14 Construction and Repair of Buildings and Furniture .....			300 0 0	600 0 0	
15 Provisions, Bedding, Utensils, &c., for Prisoners			150 0 0	150 0 0	
16 Contribution to Reward Branch of the Police Provident Fund .....			500 0 0	500 0 0	
17 Printing .....			200 0 0	250 0 0	
18 Miscellaneous Expenses, including Medical Officer and Medicine, extra Constables, Purchase, &c., Boats, Acts, Newspapers and Books, Pay of Female Searcher, Office Cleaner, Drill Instructors, Sanitary and Water Service .....			300 0 0	300 0 0	
19 Postal charges, Telegrams, and Telephones .....			550 0 0	550 0 0	
20 Infant Life Protection .....			300 0 0	300 0 0	
21 Purchase of Samples of Liquor for Analysis....			50 0 0	50 0 0	
			5545 0 0	6035 0 0	
<i>Total Police Department</i> .....			39,758 12 6	40,839 11 8	
<i>Estimated Revenue for Rental of Government Quarters, and fees on Collections, &amp;c.</i> .....			1510 0 0	1800 0 0	

## Appropriation, 1910-11.

## ATTORNEY-GENERAL—continued.

	CLASSIFICATION.		1909-10.			1910-11.			Total Emoluments, including estimated value of allowances not received in cash.		
	Class.	Sub-division.	Fixed Establishment.			Fixed Establishment.			£ s. d.		
			£	s.	d.	£	s.	d.			
<b>Gaols.</b>											
<b>XLIII.—GAOL, HOBART.</b>											
<b>SALARIES.</b>											
Sheriff .. .. .	..	..	..	..	..	See XXXV.	..	..	..	..	..
1 Superintendent (Quarters, Fuel, Light, &c., £80)	C2	6	240	0	0	240	0	0	320	0	0
2 Deputy-Gaoler (Quarters, Fuel, Light, and Uniform, £42) .. .. .	G1		172	0	0	172	0	0	214	0	0
3 Clerk .. .. .	C4a		162	0	0	162	0	0			
4 Clerk .. .. .	C4b		45	0	0	57	10	0			
5 Overseer of Mechanics, with Uniform, £2....	G2		133	0	0	133	0	0	135	0	0
6 Overseer of Shoemakers, with Uniform, £2....	G2		133	0	0	133	0	0	135	0	0
7 Chief Warder (Quarters, Fuel, Light, and Uniform, £32) .. .. .	G2		122	0	0	122	0	0	154	0	0
8 Eight Warders (1st Class), at £122, Uniform £2 each .. .. .	G2		976	0	0	976	0	0	992	0	0
9 Four Warders (2nd Class), at £108, Uniform £2 each .. .. .	G3		432	0	0	432	0	0	440	0	0
10 Five Warders (3rd Class), at £96, Uniform £2 each .. .. .	G3		480	0	0	480	0	0	490	0	0
11 Two Female Warders—One at £62, and one at £52 (Quarters, Fuel, and Light, £15 each)	G4		114	0	0	114	0	0	144	0	0
12 Medical Officer .. .. .			25	0	0	25	0	0			
<b>CONTINGENCIES.</b>			<b>3034 0 0</b>			<b>3046 10 0</b>					
13 Clothing, Bedding, Stores, and Stationery, Uniforms, Provisions, Medical Comforts, Fuel and Light, Miscellaneous .. .. .			1300	0	0	1500	0	0			
14 Postal Charges, Telegrams, and Telephones....			16	0	0	18	0	0			
15 Printing .. .. .			5	0	0	5	0	0			
16 Repairs and Alterations .. .. .			..			200	0	0			
			<b>1321 0 0</b>			<b>1723 0 0</b>					
<i>Total Gaol, &amp;c., Hobart</i> .. .. .			<b>4355 0 0</b>			<b>4769 10 0</b>					
<i>Estimated Revenue for Services</i> .. .. .			<b>700 0 0</b>			<b>750 0 0</b>					

## Appropriation, 1910-11.

## ATTORNEY-GENERAL—continued.

	CLASSIFICATION.		1909-10.	1910-11.	Total Emoluments, including estimated values of allowances not received in cash.
	Class.	Sub-division.	Fixed Establishment.	Fixed Establishment.	
			£ s. d.	£ s. d.	
<b>XLIV.—GAOL, LAUNCESTON.</b>					
SALARIES.					
1 Superintendent—also Superintendent of Police, North Eastern-Division, £320, and Inspector C.D. Hospital, £15, with Quarters, &c., £43			10 0 0	2 10 0	388 0 0
2 Superintendent, from 1st October, at £110—also Deputy Superintendent, Launceston Invalid Depôt, with Quarters, Fuel, and Light, say £52—also Inquiring Office, £45, and Collector Charitable Institutions on Commission, say £34	G1		..	82 10 0	241 0 0
3 Senior Warder, for Three Months, Quarters, Fuel, Light, and Uniform, £31 .. .. .	G2		110 0 0	110 0 0	141 0 0
4 Warder—with Quarters, Fuel, Light, and Uniform, £26 .. .. .	G2		93 0 0	93 0 0	119 0 0
5 Warder—with Uniform, £5, Three Months in 1910-11 .. .. .	G2		130 0 0	32 10 0	37 10 0
Female Warder—also Matron Launceston Invalid Depôt, £12, with Fuel, Light, Water, and Quarters, £30 .. .. .	G3		57 0 0	..	99 0 0
6 Matron—also C.D. Hospital, £30, with Fuel, Light, Water, and Quarters, £30 .. .. .			..	30 0 0	90 0 0
			400 0 0	350 10 0	
CONTINGENCIES.					
7 Provisions, Medical Comforts, Stores, Clothing, Bedding, Stationery, Miscellaneous, Medical Attendance and Medicines, Conveyance of Stores, Fuel, Light, and Water .. .. .			294 0 0	280 0 0	
8 Postal Charges, Telegrams, and Telephones .. .			9 0 0	9 0 0	
9 Printing .. .. .			3 0 0	3 0 0	
			306 0 0	292 0 0	
<i>Total Gaol, Launceston</i> .. .. .			706 0 0	642 10 0	
<b>XLV.—GAOLS—GENERAL SERVICE.</b>					
1 Escort of Prisoners and transport of discharged Prisoners, Earnings of Prisoners, Expenses Finger-print System .. .. .			400 0 0	300 0 0	
<b>TOTAL GAOLS</b> .. .. .			5461 0 0	5712 0 0	

## Appropriation, 1910-11.

## ATTORNEY-GENERAL—continued.

	CLASSIFI- CATION		1909-10.			1910-11.			Total Emoluments, including esti- mated value of allowances not received in cash.
	Class.	Sub- division.	Fixed Establishment.			Fixed Establishment.			
			£	s.	d.	£	s.	d.	£
<b>Education.</b>									
<b>XLVI.—EDUCATION DEPARTMENT.</b>									
<b>SALARIES.</b>									
1 Director of Education .....	PA		600	0	0	600	0	0	
2 Secretary .....	C2	6	450	0	0	450	0	0	
3 Chief Clerk and Accountant .....	C2	1	250	0	0	260	0	0	
4 Clerk ; also Secretary Scholarship Board, £10	C3	5	202	10	0	210	0	0	220
5 Clerk .....	C4a		150	0	0	160	0	0	
6 Clerk .....	C4a		130	0	0	140	0	0	
6 Clerk .....	C4a		120	0	0				
7 Clerk .....	C4b		65	0	0	80	0	0	
8 Clerk .....	C4b		50	0	0	65	0	0	
9 Clerk .....	C4b		..			47	10	0	
10 Clerk .....	C4b		..			41	0	0	
11 Truant Officer, Hobart .....	G2		140	0	0	150	0	0	
12 Truant Officer, Launceston .....	G1		100	0	0	100	0	0	
13 Truant Officer, Queenstown, for six months, 1910			30	0	0	15	0	0	
			2287	10	0	2318	10	0	
14 Board of Examiners .....			..			50	0	0	
15 Salaries of Inspectors of Schools, 5 at £400 each .....			..			2000	0	0	
16 Salaries, Principal, Training College, and 3 Assistants .....			..			860	0	0	
17 Salaries and Travelling Allowances, Medical Inspectors and 2 Nurses .....			..			720	0	0	
18 Salaries and Allowances to Teachers (including Allowances to Students in Training). Teachers in State Schools and Provisional Schools to be paid in accordance with the scales of staffing and salaries in the Regulations under the Education Act of 1885, and in no case shall the Teacher be paid salary exceeding the maximum in his or her class .....			..			62,561	0	0	
19 Rents, Transfer Allowances, School Furniture and Fittings, and School Books and Requisites .....			..			1800	0	0	
20 Miscellaneous .....			..			460	0	0	
Salaries and Allowances to Inspectors (5 at £400 each), Teachers, School Visitors, and Maintenance of Schools under the Education Department (including Training Schools, Manual Training Schools, and Domestic Economy Schools), and Medical Inspection (including Salaries and Travelling expenses of Medical Inspectors). Teachers in State Schools and Provisional Schools to be paid in accordance with the scales of staffing and salaries in the Regulations under the Education Act of 1885, and in no case shall a Teacher be paid a salary exceeding the maximum of his or her class .....			61,500	0	0	..			
21 Repairs and Improvements to State Schools....			4000	0	0	4000	0	0	
			65,500	0	0	72,451	0	0	
<i>Carried forward.</i> .....			67,787	10	0	74,769	10	0	

## Appropriation, 1910-11.

ATTORNEY-GENERAL.—*continued.*

	CLASSIFICATION.		1909-10.		1910-11.		Total Emoluments, including estimated value of allowances not received in cash.
	Class.	Sub-division.	Fixed Establishment.		Fixed Establishment.		
			£	s. d.	£	s. d.	£
<b>EDUCATION DEPARTMENT—<i>continued.</i></b>							
<i>Brought forward</i> .....							
<b>CONTINGENCIES.</b>							
22			500	0 0	450	0 0	
23			100	0 0	50	0 0	
24			3650	0 0	3700	0 0	
25			70	0 0	70	0 0	
26			1200	0 0	1200	0 0	
27			350	0 0	350	0 0	
28			300	0 0	350	0 0	
29			450	0 0	450	0 0	
30			250	0 0	150	0 0	
31			380	0 0	300	0 0	
			7250	0 0	7070	0 0	
			75,037	10 0	81,839	10 0	
<i>Total Primary Education</i> .....							
<b>TECHNICAL EDUCATION.</b>							
For purposes of Technical Education (and fees paid by Students): Accounts to be paid by the Treasury on the certificate of the Chairman of the Committee of the School, or the member appointed in his stead .....							
32			1700	0 0	850	0 0	
33			275	0 0	850	0 0	
34			700	0 0	275	0 0	
35			..	..	50	0 0	
36			700	0 0	700	0 0	
			2675	0 0	2725	0 0	
			77,712	10 0	84,564	10 0	
<i>Total Education Department</i> .....							
<i>Estimated Revenue</i> .....							
			100	0 0	40	0 0	
<b>XLVII.—TASMANIAN UNIVERSITY.</b>							
1			*4000	0 0	*4000	0 0	
2			500	0 0	500	0 0	
			4500	0 0	4500	0 0	
			82,212	10 0	89,064	10 0	
<b>TOTAL EDUCATION</b> .....							
		£ s. d.					
		*Reserved by Law	4000	0 0			
		To be voted	85,064	10 0			
			£89,064	10 0			

## Appropriation, 1910-11.

## ATTORNEY-GENERAL—continued.

	CLASSIFICATION.		1909-10.			1910-11.			Total Emoluments, including estimated value of allowances not received in cash.
	Class.	Sub-division.	Fixed Establishment.			Fixed Establishment.			
			£	s.	d.	£	s.	d.	
<b>XLVIII.—DEPARTMENT OF MINES.</b>									
<b>HOBART.</b>									
1 Secretary for Mines; also Chairman Mt. Cameron Water-race Board, £25 .....	C1		450	0	0	450	0	0	475
2 Chief Clerk .....	C2	4	310	0	0	320	0	0	
3 Clerk, Cashier, and Accountant .....	C2	1	250	0	0	260	0	0	
4 Registrar of Mines; also Chairman of Board of Examiners, Merchant Ships Officers' Examination Act, £50 .....	C3	4	220	0	0	225	0	0	275
5 Engrossing Clerk .....	C4a		195	0	0	195	0	0	
6 Clerk .....	C4a		160	0	0	160	0	0	
7 Clerk .....	C4a		140	0	0	150	0	0	
3 Clerk; also Secretary to Mining Board, £10 ..	C4a		130	0	0	120	0	0	130
			1855	0	0	1880	0	0	
<b>LAUNCESTON.</b>									
9 Warden of Mines, Launceston, North and North-Eastern Division; also Commissioner Courts of Requests, Launceston, &c., £400, and Police Magistrate, &c., North-Eastern Division .....			150	0	0	150	0	0	550
10 Registrar of Mines; also Clerk in charge Lands, £110; and Registrar of Births, £20 .....	C3	5	110	0	0	110	0	0	240
11 Clerk and Draftsman; also Lands, £120 .....	PC	4	120	0	0	120	0	0	240
12 Clerk; also Clerk Lands Office, £30 .....	C3	1	140	0	0	150	0	0	180
			520	0	0	530	0	0	
<b>NORTH-EASTERN MINING DIVISION.</b>									
13 Registrar, Moorina .....	C4b		80	0	0	80	0	0	
14 Registrar, Gladstone—also Postmistress, &c., £120 .....			40	0	0	40	0	0	160
			120	0	0	120	0	0	
<b>EASTERN MINING DIVISION.</b>									
15 Registrar and Clerk .....			50	0	0	50	0	0	
<b>NORTH-WESTERN MINING DIVISION.</b>									
16 Registrar of Mines, Waratah—also Constable, £96 .....			15	0	0	15	0	0	111
17 Registrar of Mines, Mt. Balfour .....			..			50	0	0	
			15	0	0	65	0	0	
<b>WESTERN MINING DIVISION.</b>									
18 Warden of Mines—also Police Magistrate (£300) .....			100	0	0	100	0	0	400
19 Registrar, Zeehan .....			120	0	0	120	0	0	
			220	0	0	220	0	0	
Carried forward .....			2780	0	0	2865	0	0	

## Appropriation, 1910-11.

## ATTORNEY-GENERAL—continued.

	CLASSIFICATION.		1909-10.	1910-11.	Total Emoluments, including estimated value of allowances not received in cash.
	CLASS.	Sub-division.	Fixed Establishment.	Fixed Establishment.	
			£ s. d.	£ s. d.	
<b>DEPARTMENT OF MINES—continued.</b>					
<i>Brought forward</i> .....			2780 0 0	2865 0 0	
<i>Government Geologist and Inspectors of Mines.</i>					
20 Government Geologist & Chief Inspector of Mines	PA		500 0 0	500 0 0	
21 Assistant Geologist and Inspector of Mines £300 to 31 December, £350 from 1 January, 1911 .....	PB	4	285 0 0	325 0 0	
22 Clerk and Draftsman .....	PC	2	200 0 0	200 0 0	
23 Inspector of Mines, Launceston; also of Works, N.E. Division .....	PB	3	350 0 0	350 0 0	
24 Inspector of Mines, Zeehan .....	PB	2	325 0 0	325 0 0	
25 Inspector of Mines, Queenstown .....	PB	1	277 10 0	285 0 0	
			1937 10 0	1985 0 0	
<i>Total Salaries</i> .....			4717 10 0	4850 0 0	
<b>ALLOWANCES.</b>					
26 Forage Allowance—Inspector, Zeehan .....			25 0 0	25 0 0	
<b>CONTINGENCIES, MINES.</b>					
27 Travelling Expenses (including Wages of Field Assistants to Geologists, &c.) .....			350 0 0	450 0 0	
28 Miscellaneous Expenses, Stationery, &c., and Law Expenses .....			120 0 0	120 0 0	
29 Printing .....			300 0 0	300 0 0	
30 Postal Charges, Telegraphs, and Telephones ..			210 0 0	210 0 0	
31 Geological Instruments, Books, &c. ....			50 0 0	50 0 0	
32 Assisting Prospectors in further developing their discoveries—£1 for £1, not exceeding in any case £50 .....			..	200 0 0	130
			1030 0 0	1330 0 0	
<b>MINING BOARD.</b>					
33 Remuneration to Members .....			100 0 0	100 0 0	
34 Salary of Secretary; also Clerk Mines, £120 ..			10 0 0	10 0 0	
			110 0 0	110 0 0	
<i>Total Department of Mines</i> .....			5882 10 0	6315 0 0	

## Appropriation, 1910-11.

## Minister of Lands and Works.

Lands, Works, Mines, Agricultural, and Railway Departments.	CLASSIFI- CATION.		1909-10.		1910-11.		Total Emoluments, including esti- mated value of allowances not received in cash.
	Class.	Sub- division.	Fixed Establishment.		Fixed Establishment.		
			£	s. d.	£	s. d.	£
<b>XLIX.—DEPARTMENT OF LANDS AND SURVEYS.</b>							
SALARIES.							
1 Surveyor-General and Secretary for Lands, also Trustee Agricultural Bank, £26 .....	PA		550	0 0	550	0 0	576
CLERICAL STAFF.							
2 Chief Clerk .....	C2	5	320	0 0	330	0 0	
3 Clerk and Accountant; also Returning Officer, £16 .....	C2	1	260	0 0	260	0 0	276
4 Clerk .....	C2	1	250	0 0	260	0 0	
5 Clerk .....	C3	5	240	0 0	240	0 0	
6 Clerk .....	C3	1	180	0 0	180	0 0	
7 Clerk; also Secretary Closer Settlements Board, (£10 in 1909-10) .....	C3	4	210	0 0	225	0 0	
8 Clerk .....	C3	1	180	0 0	180	0 0	
9 Clerk; also Secretary to Minister .....	C3	3	180	0 0	195	0 0	
10 Clerk and Secretary to Trustees Agricultural Bank .....	C4a		120	0 0	140	0 0	
11 Clerk .....	C4c		80	0 0	95	0 0	
12 Clerk .....	C4b		45	0 0	57	10 0	
13 Clerk in Charge, Launceston; also Registrar of Mines, £110, and Registrar of Births, £20	C3	5	110	0 0	110	0 0	240
14 Clerk; also Clerk Mines, £150 .....	C3	1	30	0 0	30	0 0	180
15 Chief Forest Officer .....	C2	1	260	0 0	260	0 0	
16 Crown Lands Bailiff, West Coast .....	G3		104	0 0	104	0 0	
PROFESSIONAL STAFF.							
17 Chief Draftsman .....	PB	5	375	0 0	385	0 0	
18 Draftsman in Charge .....	PB	2	250	0 0	260	0 0	
19 Draftsman (Computing); also Secretary Board of Examiners, £10 .....	PB	2	285	0 0	310	0 0	320
20 Draftsman .....	PC	3	220	0 0	220	0 0	
21 Draftsman .....	PC	3	210	0 0	220	0 0	
22 Draftsman .....	PC	1	180	0 0	180	0 0	
23 Draftsman .....	PC	2	180	0 0	190	0 0	
24 Draftsman .....	PD		110	0 0	120	0 0	
25 Draftsman .....	PD		60	0 0	80	0 0	
26 Draftsman .....	PD		60	0 0	80	0 0	
27 Clerk and Draftsman, Launceston; also Mines, £120 .....	PC	4	120	0 0	120	0 0	240
MINING.							
28 Chief Draftsman .....	PB	2	297	10 0	310	0 0	
29 Draftsman .....	PC	3	220	0 0	220	0 0	
30 Draftsman .....	PC	2	200	0 0	200	0 0	
31 Draftsman—£60 from 1st November .....	DD				40	0 0	
Carried forward .....			5886	10 0	6151	10 0	



## Appropriation, 1910-11.

MINISTER OF LANDS AND WORKS—*continued.*

	CLASSIFI- CATION.		1909-10.	1910-11.	Total Emoluments, including esti- mated value of allowances not received in cash.
	Class.	Sub- division.	<i>Fixed Establishment.</i>	<i>Fixed Establishment.</i>	
			£ s. d.	£ s. d.	
<b>DEPARTMENT OF LANDS AND SURVEYS—<i>continued.</i></b>					
<i>Brought forward</i> .....			5886 10 0	6151 10 0	£
<b>CONTINGENCIES.</b>					
32		Travelling Expenses Surveyor-General, Forest Officer, and Inspector of Timber .....	100 0 0	75 0 0	
33		Incidental Expenses, Crown Bailiffs, &c; Com- mission for selling Public Lands; Collecting Residence, &c., Licences; Inspection of Timber; Miscellaneous Expenses; Stationery, Stores, and Advertising .....	500 0 0	800 0 0	
34		Printing .....	500 0 0	700 0 0	
35		Expenses in connection with Examination of Surveyors .....	15 0 0	15 0 0	
36		Postal Charges, Telegrams, and Telephones....	250 0 0	300 0 0	
<i>Total Department of Lands and Surveys</i> ..			1365 0 0	1890 0 0	
<i>Estimated Revenue earned for Services</i> .....			7251 10 0	8041 10 0	
			<b>5500 0 0</b>	<b>5500 0 0</b>	

## Appropriation, 1910-11.

## MINISTER OF LANDS AND WORKS—continued.

	CLASSIFICATION.		1909-10.				1910-11.							
	Class.	Sub-division.	Fixed Establishment.			Special Staff charged to Loans.			Fixed Establishment.			Special Staff charged to Loans.		
			£	s.	d.	£	s.	d.	£	s.	d.	£	s.	d.
<b>L.—DEPARTMENT OF PUBLIC WORKS.</b>														
<b>CLERICAL STAFF.</b>														
1	Secretary for Public Works	C1	360	0	0				360	0	0			
2	Chief Clerk and Accountant	C2	320	0	0				330	0	0			
3	Clerk	C3	240	0	0				170	0	0			
4	Cashier and Account Clerk	C3	160	0	0				170	0	0			
5	Clerk	C4a	130	0	0				140	0	0			
6	Clerk	C4b	95	0	0				110	0	0			
7	Clerk	C4b	71	5	0				86	5	0			
8	Clerk	C3	90	0	0	140	0	0	90	0	0	140	0	0
9	Clerk	C4b	80	0	0				95	0	0			
	Clerk	C4b				95	0	0				95	0	0
	Clerk	C4b				45	0	0				50	0	0
<b>PROFESSIONAL STAFF.</b>														
10	Engineer-in-Chief	PA	200	0	0	310	0	0	200	0	0	310	0	0
11	Engineer and Surveyor of Roads and Railways	PB				500	0	0				500	0	0
12	Chief Draftsman and Assistant Engineer	PB	50	0	0	<del>222</del> 10	0	0	50	0	0	235	0	0
	Draftsman	PC				192	10	0				200	0	0
	Draftsman	PC				220	0	0				220	0	0
	Junior Draftsman	PD										60	0	0
	Clerk	C4a				160	0	0				160	0	0
13	Clerk	C4a	20	0	0	100	0	0	20	0	0	110	0	0
14	Inspector of Roads, North	G1	50	0	0	300	0	0	50	0	0	300	0	0
	Inspector of Roads, South	G1				230	0	0				240	0	0
	Sub-Inspector of Roads, North	G2				190	0	0						
	Sub-Inspector of Roads, North	G2				190	0	0				190	0	0
	Sub-Inspector of Roads, N. E. District	G1				210	0	0				220	0	0
	Sub-Inspector of Roads, South	G2				190	0	0				190	0	0
	Sub-Inspector of Roads, South	G2				170	0	0				180	0	0
	Sub-Inspector of Roads, West Coast	G2				150	0	0						
	Sub-Inspector of Roads, North-West Coast	G2				170	0	0				180	0	0
	Clerk and Draftsman, North	PD				150	0	0				150	0	0
15	Inspector of Public Buildings	PB	50	0	0	310	0	0	50	0	0	310	0	0
	Architectural Draftsman	PC				220	0	0				220	0	0
	Draftsman	PC				210	0	0				210	0	0
	Clerk of Works, South	G1				220	0	0				220	0	0
	Clerk of Works, North	G2				180	0	0				180	0	0
	Draftsman	PD										150	0	0
			1916	5	0	5075	0	0	1921	5	0	5020	0	0
<b>CONTINGENCIES.</b>														
16	Stationery, Stores, Incidental Expenses, including Stamps on Receipts for deposits, and Advertising		100	0	0				100	0	0			
17	Printing		200	0	0				200	0	0			
18	Postal Charges, Telegrams, Telephones		300	0	0				325	0	0			
			600	0	0				625	0	0			
<b>Total Department of Public Works</b>			2516	5	0	5075	0	0	2546	5	0	5020	0	0

## Appropriation, 1910-11.

## MINISTER OF LANDS AND WORKS—continued.

	CLASSIFICATION.		1909-10.	1910-11.	Total Emoluments, including estimated value of allowances not received in cash.
	Class.	Sub-division.	Fixed Establishment.	Fixed Establishment.	
			£ s. d.	£ s. d.	£
<b>AGRICULTURAL AND STOCK DEPARTMENT.</b>					
<b>SALARIES.</b>					
Chief Inspector of Stock and Colin Moth . . . . .	PA		400 0 0	..	
Chief Clerk and Inspector, under Vegetation Diseases Act ; also Inspector Marine Fumigation Chambers and Inspector under Commerce Act . . . . .	C3	4	217 10 0	..	
Clerk . . . . .	C4b		95 0 0	..	
Inspector, Launceston ; also Allowance, £26. . . . .			130 0 0	..	
Ditto . . . . .			30 0 0	..	
Inspector, Hobart . . . . .			35 0 0	..	
Ditto . . . . .			20 0 0	..	
Inspector, Devonport . . . . .			20 0 0	..	
Inspector, Strahan . . . . .			5 0 0	..	
Caretaker, Middle Island (with allowance for Fuel and Light, £7 10s., and Quarters, say £20) ; also Fees for caretaking imported stock	G3		70 0 0	..	
Caretaker, Nubeena (with Quarters and Run for Cow, say £20) . . . . .	G3		86 0 0	..	
Fumigation Inspector ; also Inspector of Imported Fruit, and State Supervising Officer, Commerce Act, £100, and Senior Inspector Interstate Inspection of Vegetable Products, £50 . . . . .	G1		150 0 0	..	
			1258 10 0	..	
<b>ALLOWANCES.</b>					
Caretaker, Middle Island, Fuel and Light . . . . .			7 10 0	..	
Inspector, Launceston, for Horse and Trap . . . . .			26 0 0	..	
			33 10 0	..	
<b>CONTINGENCIES.</b>					
Californian Thistle; Destruction of; Rabbits on Crown Land, Destruction of; Officers' Travelling Expenses; Railway Fares; Stationery, Advertising, and Miscellaneous; Entomological and other Inspection of imported and exported Fruit, Trees, &c.; Fees and Expenses Veterinary Surgeon and Botanist			350 0 0	..	
Postage, Telegrams, and Telephones . . . . .			70 0 0	..	
Printing . . . . .			40 0 0	..	
			460 0 0	..	
<i>Total Agricultural and Stock Department..</i>			1752 0 0	..	
<i>Estimated Revenue for Services..</i>			300 0 0	..	

## Appropriation, 1910-11.

## MINISTER OF LANDS AND WORKS—continued.

	CLASSIFICATION.		1909-10.	1910-11.	Total Emoluments, including estimated value of allowances not received in cash.
	Class.	Sub-division.	Fixed Establishment.	Fixed Establishment.	
			£ s. d.	£ s. d.	
<b>COUNCIL OF AGRICULTURE.</b>					
<b>SALARIES.</b>					
Director of Agriculture—from 1st January, 1910			250 0 0	..	
Editor <i>Agricultural Gazette</i> , and Agricultural Organiser; also Inspector under "Vegetation Diseases" and "Manure Adulteration" Acts; also Inspector of City Fumigation Chamber, also Assistant Returning Officer, say £8 ....			250 0 0	..	258
Dairy Expert .....			270 0 0	..	
Agricultural Expert and Chemist .....			240 0 0	..	
Entomologist .....			250 0 0	..	
Poultry Expert .....			250 0 0	..	
Fruit and Forestry Expert .....			230 0 0	..	
			1740 0 0	..	
<b>CONTINGENCIES.</b>					
Members and Officers' Travelling Expenses; Railway Fares; Printing (including the publication of the <i>Agricultural Gazette</i> in book form; also publication of Bulletins on Fruit-growing, Poultry, and Insect Pests of Farm and Orchard, £100); Stationery, Advertising, and Miscellaneous .....			800 0 0	..	
Postage, Telegrams, & Telephones .....			70 0 0	..	
Classes for Agricultural Instruction .....			250 0 0	..	
			1120 0 0		
<i>Total Council of Agriculture</i> ... ..			2860 0 0	..	

## Appropriation, 1910-11.

## MINISTER OF LANDS AND WORKS—continued.

LI.—AGRICULTURAL AND STOCK DEPARTMENT.	CLASSIFICATION.		1909-10.			1910-11.			Total Emoluments, including estimated value of allowances not received in cash.		
	Class.	Sub-division.	Fixed Establishment.			Fixed Establishment.					
PROFESSIONAL STAFF.			£	s.	d.	£	s.	d.	£	s.	d.
1 Director of Agriculture.....	PA		..			500	0	0			
2 Chief Inspector of Stock .....	PA		..			400	0	0			
3 Dairy Expert.....			..			270	0	0			
4 Entomologist.....			..			250	0	0			
5 Poultry Expert.....			..			250	0	0			
6 Agricultural Expert and Chemist .....			..			240	0	0			
7 Fruit and Forestry Expert .....			..			230	0	0			
8 Inspector of Stock, Launceston .....			..			140	0	0			
9 Inspector of Stock, Hobart .....			..			35	0	0			
10 Inspector of Stock, Launceston.....			..			30	0	0			
11 Inspector of Stock, Hobart .....			..			20	0	0			
12 Inspector of Stock, Strahan .....			..			5	0	0			
13 Senior Inspector Transferred Products (Inwards and Outwards), also State Supervising Officer Commerce Act, £100; and Senior Inspector Vegetable Product, £50.....			..			150	0	0	300	0	0
14 Inspector of Stock, Devonport, also from Contingencies, £22 10s., and from Potato Diseases Fund, £150 .....			..			20	0	0	192	10	0
CLERICAL STAFF.											
15 Editor "Agricultural Gazette" and Agricultural Organiser .....			..			260	0	0			
16 Chief Clerk, also Quarantine Officer, £25.....	C3	4	..			225	0	0	250	0	0
17 Clerk .....	C4a		..			110	0	0			
GENERAL STAFF.											
18 Caretaker, Nubeena, with Quarters, say £15 ..			..			86	0	0	101	0	0
19 Caretaker, Middle Island, with allowance for Fuel and Light, £7 10s.; and Quarters, say £15; also fees for caretaking imported Stock .....			..			70	0	0	92	10	0
ALLOWANCES.						3291	0	0			
20 Caretaker, Middle Island, Fuel and Light ....			..			7	10	0			
21 Inspector, Launceston, for Horse and Trap....			..			26	0	0			
CONTINGENCIES.						33	10	0			
22 Classes for Instruction; Farmers' Experiments; Printing, including "Agricultural Gazette"; Chemical Laboratory, and assistance of Agricultural Chemist; Destruction of Rabbits and Californian Thistles on Crown Lands; Expenses for Inspection of Transferred Stock and Vegetable Products; Botanist; Travelling Expenses and Railway Fares, Stationery, Advertising, and Clerical Assistance .....			..			2600	0	0			
23 Eradication San José Scale .....			..			100	0	0			
24 Nursery for Afforestation .....	See LIV		..			200	0	0			
25 Postal Charges, Telegrams, and Telephone ....			..			160	0	0			
26 Agistment of Dairy Cattle while in Quarantine..			..			150	0	0			
						3210	0	0			
<i>Total Agricultural and Stock Department..</i>						4612	0	0	6534	10	0
<i>Estimated Revenue for Services .....</i>									900	0	0



## Appropriation, 1910-11.

MINISTER OF LANDS AND WORKS—*continued.*

	CLASSIFICATION.		1909-10.	1910-11.	Total Emoluments, including estimated value of allowances not received in cash.
	Class.	Sub-division.	Fixed Establishment.	Fixed Establishment.	
			£ s. d.	£ s. d.	£
<b>LIII.—ROADS, BRIDGES, SURVEYS, TRACKS, BUILDINGS, FERRIES, &amp;c.</b>					
1 Reserve for Expenditure in connection with Residence Areas and Mining Settlement . . .			400 0 0*	400 0 0*	
2 Surveys of Lands for Sale, for Lease, or for Public Purposes . . . . .			10,000 0 0	12,000 0 0	
3 Aid to Road Rates . . . . .			18,000 0 0	16,000 0 0	
4 Bridges, and Jetties generally . . . . .			2,500 0 0	2,500 0 0	
5 Repairs to Tracks generally . . . . .			200 0 0	200 0 0	
6 Repairs, Alterations, and Miscellaneous Expenses in connection with Public Buildings, including Country Buildings . . . . .			450 0 0	600 0 0	
7 Launceston General Hospital—Repairs . . . . .			..	200 0 0	
8 Hobart General Hospital—Repairs . . . . .			..	200 0 0	
9 Repairs and Alterations, Public Buildings, Launceston . . . . .			..	400 0 0	
10 Furniture and General Repairs, Parliamentary Buildings . . . . .			100 0 0	125 0 0	
11 Furniture, Public Offices generally . . . . .			150 0 0	250 0 0	
12 Repairs to Roads and Fences, and improving and maintaining Franklin-square, Queen's Domain, Barracks Reserve, Hobart, and Parliament House Reserve . . . . .			340 0 0	340 0 0	
13 Rates on Government Property . . . . .			200 0 0	200 0 0	
14 Aid to Ferry, Hobart to Bellerive . . . . .			300 0 0	300 0 0	
15 Ditto, Risdon . . . . .			100 0 0	100 0 0	
16 Ditto Ferries, Arthur and Pieman Rivers . . . . .			75 0 0	75 0 0	
17 Ditto, Austin's Ferry . . . . .			15 0 0	15 0 0	
18 Maintenance Denison Canal . . . . .			200 0 0	200 0 0	
19 In aid of Surveys of Roads, &c. . . . .			500 0 0	500 0 0	
20 To make good to Survey Advance Account balances of Survey Fees due by Selectors who have defaulted in their Payments . . . . .			..	305 0 0	
<b>TOTAL ROADS, BRIDGES, SURVEYS, &amp;c . . . . .</b>			<b>33,530 0 0</b>	<b>34,910 0 0</b>	
<i>Estimated Revenue for Survey Fees . . . . .</i>			<i>8000 0 0</i>	<i>11,000 0 0</i>	
*Reserved by Law . . . . . £400					
To be voted . . . . . 34,510					
			<b>£34,910</b>		
<b>LIV.—MISCELLANEOUS.</b>					
1 Inspection of Private Railways . . . . .			25 0 0	25 0 0	
Nursery for Afforestation . . . . .			200 0 0	See LI.	
2 Investigating and obtaining Reports upon the Water Supply of Tasmania for power and irrigation purposes . . . . .			250 0 0	500 0 0	
<i>Total Miscellaneous . . . . .</i>			<i>475 0 0</i>	<i>525 0 0</i>	

## Appropriation, 1910-11.

## Miscellaneous—General

	CLASSIFICATION.		1909-10.			1910-11.			Total Emoluments, including estimated value of allowances not received in cash.
	Class.	Sub-division.	Fixed Establishment.			Fixed Establishment.			
			£	s.	d.	£	s.	d.	£
<b>LV.—Miscellaneous—General.</b>									
1			1500	0	0	1750	0	0	
2									
			125	0	0	100	0	0	
3									
			1300	0	0	1000	0	0	
4									
			40	0	0	10	0	0	
5			130	0	0	100	0	0	
			2000	0	0				
6			600	0	0	600	0	0	
7									
8			1000	0	0	1000	0	0	
9									
			3000	0	0	42	19	6	
10			50	0	0	50	0	0	
			50	0	0				
11									
			125	0	0	125	0	0	375
			50	0	0				
			250	0	0				
			50	0	0				
			40	0	0				
12									
			130	0	0	130	0	0	
			282	10	0				
			397	12	0				
			11,120	2	0	4907	19	6	



## Appropriation, 1910-11.

## MISCELLANEOUS—GENERAL—continued.

	CLASSIFICATION.		1909-10.	1910-11.	Total Emoluments, including estimated value of allowances not received in cash.
	Class.	Sub-division.	Fixed Establishment.	Fixed Establishment.	
			£ s. d.	£ s. d.	
<b>MISCELLANEOUS.—GENERAL—continued.</b>					
<i>Brought forward</i> .. . . . . .			11,120 2 0	4907 19 6	
Repayment to Teachers as recommended by the Royal Commission on Education .. . . . . .			60 0 0	..	
Compensation to <i>Maynards</i> , in connection with irregularity of sentence .. . . . . .			40 0 0	..	
13 To secure steamship service between Launceston and Furneaux Islands .. . . . . .			75 0 0	175 0 0	
To provide for payment to Solicitor-General for special services in connection with, and consequent upon, the appeal in the suit—The V.D.L. Co. v. The Marine Board of Table Cape (in addition to sum provided by 7 Ed. VII. No. 2)			300 0 0	..	
14 Kindergarten Schools, Hobart and Launceston, on £ for £ system .. . . . . .			..	200 0 0	
15 Reprinting and Consolidating Tasmanian Statutes, from 1901 to 1909 inclusive . . . . .			..	100 0 0	
16 Contribution towards meeting Expenses of visit of Scottish Farmers .. . . . . .			..	250 0 0	
17 Payment to Sir John Dodds on account of his Costs in connection with the Royal Commission on the Scottsdale-Branxholm Railway Extension .. . . . . .			..	188 11 7	
18 Contribution to Queen's Domain Committee, an amount equivalent to Fees received, but not to exceed .. . . . . .			..	50 0 0	
19 Legal Costs incurred by Officers of Lands Department in connection with Select Committee's enquiry .. . . . . .			..	33 0 6	
20 Maintenance of Mt. Nelson Road .. . . . . .			..	75 0 0	
21 Salary of Manager of Cape Barren Island Reserve (for the first Six months of 1911) .. . . . . .			..	150 0 0	
22 Expenses of Manager ditto .. . . . . .			..	75 0 0	
23 To provide for balance of Legal Expenses in connection with the case of the V.D.L. Co. v. the Marine Board of Table Cape .. . . . . .			..	526 19 2	
24 To refund Hutton & Co. Proprietary amount of Income Tax paid in respect of the year 1908 .. . . . . .			..	50 0 0	
25 To reimburse Mr. M. T. Cheek, State School Teacher, for loss of Salary from 1 September, 1909, to 31 March, 1910 .. . . . . .			..	81 13 4	
<i>Total Miscellaneous</i> .. . . . . .			11,595 2 0	6863 4 1	

## Appropriation, 1910-11.

## Pensions, Interest, and Sinking Funds.

	CLASSIFI- CATION.		1909-10.	1010-11.	Total Emoluments, including esti- mated value of allowances not received in cash.	
	Class.	Sub- division.	<i>Fixed.</i>	<i>Fixed</i>		
			<i>Establishment.</i>	<i>Establishment.</i>		
			£ s. d.	£ s. d.	£ s. d.	
<b>LVI.—Pensions, Retired Allowances, &amp;c.</b>						
<i>For the purposes of The Public Debts Sinking Funds Act.</i>						
56 Vict. No. 24 .....			} 11,947 0 0*	} 11,947 0 0*		
58 Vict. No. 23 .....						
59 Vict. No. 40 .....						
60 Vict. No. 25 .....						
61 Vict. No. 12 .....						
3 Edw. 7 No. 29 .....						
J. Hurford, late Caretaker Government House..			78 9 9	78 9 9		
W. R. Cooke, late Compositor, Printing Depart- ment .....			120 0 0	120 0 0		
F. W. Abbott, late Draftsman, Lands and Surveys Department.....			146 13 4	146 13 4		
B. Shaw, late Police Magistrate, Hobart, to 5 September, 1910 .....			150 0 0*	27 1 8		
Geo. Browne, late Judges' Associate, and Curator Intestate Estates (additional) .....			166 13 4*	166 13 4*		
G. Richardson, late Commissioner of Police ..			366 13 4†	366 13 4†		
F. Martini, late Inspector of Explosives .....			60 0 0*	60 0 0*		
P. Finnigan, late Sub-Inspector of Police ....			26 0 0*	26 0 0*		
C. Wright, late Superintendent of Police.....			26 0 0	26 0 0		
A. Colhoun, late Sub-Inspector of Police.....			138 17 1	138 17 1		
			<b>13,226 6 10</b>	<b>13,103 8 6</b>		
Reserved by Law .....			£12,226 15 0*			
To be voted .....			876 13 6			
<b>Total Pensions .....</b>			<b>£13,103 8 6</b>			
† £350 only paid whilst holding office of Chairman Public Service Board.						

## Appropriation, 1910-11.

## PENSIONS, INTEREST, AND SINKING FUNDS—continued.

LVII.—Interest.	Rate per cent.	1909-10.			1910-11.		
		£	s.	d.	£	s.	d.
On Debentures issued under Act 44 Vict.							
No. 34.....	4	12,000	0	0	12,000	0	0
Ditto 46 Vict. No. 45 .....	3½ & 4	21,863	0	0	21,863	0	0
Ditto 47 Vict. No. 47 .....	4	32,000	0	0	32,000	0	0
Ditto 49 Vict. No. 54 .....	4	40,000	0	0	40,000	0	0
Ditto 56 Vict. No. 53 .....	4	2704	0	0	2704	0	0
On Inscribed Stock for purposes of Act 52							
Vict. No. 68 .....	3½	35,000	0	0	35,000	0	0
Ditto ditto Main Line Railway Purchase Act, 54 Vict. No. 1 .....	3½	38,728	0	0	38,728	0	0
Ditto 55 Vict. No. 82 .....	3½	21,000	0	0	21,000	0	0
Ditto, 55 Vict. No. 82 & 56 Vict. No. 56	4	40,000	0	0	40,000	0	0
Ditto 58 Vict. No. 40 .....	3½	26,250	0	0	26,250	0	0
Ditto 64 Vict. No. 14 .....	3	13,500	0	0	13,500	0	0
Ditto 3 Edw. VII. No. 26 and 4 Edw. 7							
No. 29 .....	3½	7000	0	0	7000	0	0
Ditto 7 Edw. VII. No. 16 .....	3½	7000	0	0	7000	0	0
Ditto 8 Edw. VII. Nos. 25 and 29.....	3½	5250	0	0	10,500	0	0
		302,295	0	0	307,545	0	0
On Local Inscribed Stock, 54 Vict. No. 8							
and 62 Vict. No. 38 .....	3	1200	0	0	150	0	0
Ditto, ditto, 63 Vict. No. 29.....	3	90	0	0	..		
Ditto, ditto, 63 Vict. No. 49. ....	3	1190	0	0	..		
Ditto, ditto, 64 Vict. No. 14.....	3, 3¼ & 3½	2443	0	0	2436	0	0
Ditto, ditto, 64 Vict. No. 75 .....	3½	7666	0	0	6827	0	0
Ditto, ditto, 1 Edw. VII. No. 52 .....	3½	2773	0	0	2198	0	0
Ditto, ditto, 3 Edw. VII. No. 26 .....	3½	75	0	0	62	0	0
Ditto, ditto, 4 Edw. VII. No. 30 .....	3½ & 4	714	0	0	716	0	0
Ditto, ditto, 5 Edw. VII. No. 43 .....	3½	9878	0	0	9961	0	0
Ditto, ditto, 5 Edw. VII. No. 44.....	3½	410	0	0	410	0	0
Ditto, ditto, 6 Edw. VII. No. 39.....	3½, 3¾ & 4	21,361	0	0	21,187	0	0
Ditto, ditto, 6 Edw. VII. No. 40.....	3½ & 3¾	2627	0	0	2637	0	0
Ditto, ditto, 54 Vict. No. 8, 62 Vict. No.							
38, and 5 Edw. VII. No. 31.....	3½	6000	0	0	7363	0	0
Ditto, ditto, 7 Edw. VII. No. 15 .....	3½	1050	0	0	1088	0	0
Ditto, ditto, 7 Edw. VII. No. 16 .....	3½ & 4	12,062	0	0	12,139	0	0
Ditto, 8 Edw. VII. No. 25 .....	3½ & 3¾	5000	0	0	2829	0	0
Ditto, 8 Edw. VII. No. 29 .....	3½	..	..	..	1301	0	0
Ditto, 9 Edw. VII. No. 59 .....	4	..	..	..	700	0	0
Ditto, 9 Edw. VII. No. 60 .....	4	..	..	..	5500	0	0
Treasury Bills, 4 Edw. VII. No. 31 .....	3½	638	0	0	319	0	0
Ditto, ditto, 5 Edw. VII. No. 24.....	3½	1365	0	0	1365	0	0
Ditto ditto, 7 Edw. VII. No. 23 .....	3½	735	0	0	53	0	0
Ditto ditto, 9 Edw. VII. No. 58 .....	4	..	..	..	765	0	0
		77,277	0	0	80,006	0	0
Total Interest as reserved by Law .... £		379,572	0	0	387,551	0	0
Interest on Loan of £125,000 from Government of							
New South Wales, pending floating of Loan on							
London, from 24th June to 28th October, 1910,		1187	0	0	..		
		380,759	0	0	387,551	0	0
Estimated Revenue to be received, for Interest on							
Public Account, and from Local Bodies, &c ....		£23,000	0	0	£27,000	0	0

## Appropriation, 1910-11.

PENSIONS, INTEREST, AND SINKING FUNDS—*continued.*

	CLASSIFICATION.		1909-10.	1910-11.	Total Emoluments, including estimated value of allowances not received in cash.
	Class.	Sub-division.	Fixed Establishment.	Fixed Establishment.	
<b>LVIII.—Sinking Funds.</b>					
1 Mount Cameron Water-race, Moiety of Rentals			£ 46 0 0*	£ 46 0 0*	£
2 Expenses in connection with Public Debts Sinking Fund.....			50 0 0	50 0 0	
3 Interest on Sinking Funds under Local Public Works Loans Act, &c.....			1300 0 0*	1400 0 0*	
4 Contribution to Sinking Fund under Strahan Marine Board Act, 62 Vict. No. 54.....			4000 0 0*	4000 0 0*	
5 Reserves under Crown and Waste Lands Acts to redeem Loans .....			30,000 0 0*	30,000 0 0*	
6 Contribution to be paid to Public Debts Sinking Fund to redeem Loans under Local Inscribed Stock Act, 8 Ed. VII. No. 29—					
£15,000 redeemable 1st April, 1929 (Item 3)			513 0 0*	513 0 0*	
£7900 redeemable 1st January, 1940 (Item 4)			141 0 0*	141 0 0*	
7 Contribution to be paid to Public Debts Sinking Fund for Redemption of Loans for Public Works—					
Under Act, 1 Ed. VII. No. 49 .....			1180 0 0	1180 0 0	
Ditto, 2 Ed. VII. No. 43 .....			630 0 0	630 0 0	
Ditto, 3 Ed. VII. No. 27 .....			495 0 0	495 0 0	
Ditto, 4 Ed. VII. No. 29 .....			342 0 0	342 0 0	
Ditto, 5 Ed. VII. No. 42 (exclusive Renewal of Bridges).....			458 0 0	458 0 0	
Ditto, 5 Ed. VII. No. 42 (Item 330, for Renewal of Bridges) .....			440 0 0*	440 0 0*	
Ditto, 6 Ed. VII. No. 23 .....			997 0 0*	997 0 0*	
Ditto, 7 Ed. VII. No. 31 .....			1655 0 0*	1655 0 0*	
Ditto, 8 Ed. VII. No. 14 (Item 778, for Renewal of Bridges) .....			440 0 0*	440 0 0*	
Ditto, 8 Ed. VII. No. 14 (exclusive of Renewal of Bridges) .....			1658 0 0*	1658 0 0*	
Ditto, 9 Ed. VII. No. 51 .....				1791 0 0*	
			<u>44,345 0 0</u>	<u>46,236 0 0</u>	
Reserved by Law .....			43,081 0 0*		
To be voted.....			3155 0 0		
<i>Total Sinking Funds</i> .....			<u>46,236 0 0</u>		
<i>Total Pensions, Interest, and Sinking Funds.</i> ..			<u>£438,330 6 10</u>	<u>446,890 8 6</u>	
Reserved by Law .....			£442,858 15 0		
To be voted .....			4031 13 6		
			<u>446,890 8 6</u>		