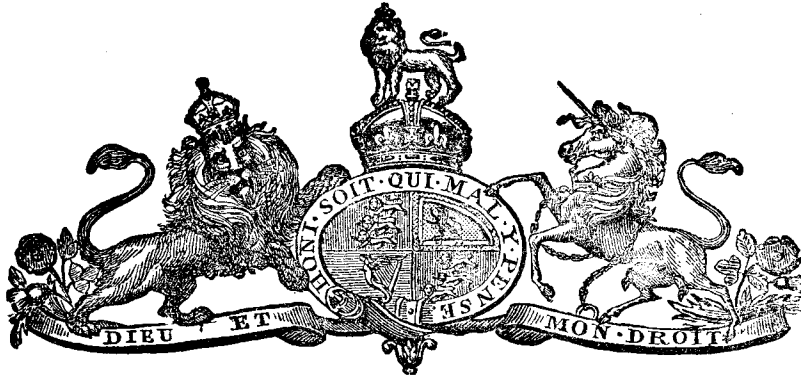




T A S M A N I A.



1911.

ANNO SECUNDO

GEORGII V. REGIS,

No. 19.

ANALYSIS.

1. Short title.
2. Issue and application of £311,575 1s. 2d.
3. Appropriation of supplies.
4. Moneys payable by warrant of the Governor.
5. Credit to be given to the Treasurer in accounts.



AN ACT to grant and apply a Sum out of the Consolidated Revenue Fund to the Service of the Year ending the Thirtieth day of June, One thousand nine hundred and twelve, and to appropriate the Supplies granted for such Year in this Session of the Parliament. [21 December, 1911.]

A.D.
1911.

BE it enacted by His Excellency the Governor of Tasmania, by and with the advice and consent of the Legislative Council and House of Assembly, in Parliament assembled, as follows :—

1 This Act may be cited as “The Appropriation Act, 1911–12.” Short title.

4s. 2d.]

Appropriation, 1911-12.

A.D. 1911.

Issue and appli-
cation of
£311,575 1s. 2d.

2 The Treasurer may issue out of the Consolidated Revenue, and apply towards making good the supply hereby granted to His Majesty for the service of the year ending the Thirtieth day of June, One thousand nine hundred and twelve, the sum of Three hundred and eleven thousand five hundred and seventy-five Pounds One Shilling and Two Pence.

Appropriation of
supplies.

3 All sums granted by this Act and "The Supply Act (No. 1), 1911-12," and "The Supply Act (No. 2), 1911-12," out of the Consolidated Revenue towards making good the supply granted to His Majesty, amounting, as appears by the First Schedule to this Act, in the aggregate to the sum of Five hundred and eighty-nine thousand five hundred and six Pounds One Shilling and Two Pence, are appropriated, and shall be deemed to have been appropriated as from the date of the passing of "The Supply Act (No. 1), 1911-12," for the purposes and services expressed in the Second Schedule.

Moneys payable
by warrant of
the Governor.

4 The Treasurer shall issue and pay the several sums to such persons for the purposes in the said Second Schedule mentioned, upon such days and in such proportions as the Governor, by any warrant under his hand, from time to time orders and directs; and the payments so to be made shall be charged upon and payable out of the Consolidated Revenue.

Credit to be
given to the
Treasurer in
accounts.

5 The said Treasurer shall be allowed credit in his accounts for any sums of money paid by him in pursuance of any such warrant as aforesaid; and the receipts of the respective persons to whom the same are so paid shall be a full and valid discharge to the said Treasurer in passing his said accounts for any such sums as are therein mentioned, and he shall receive credit for the same accordingly.

FIRST SCHEDULE.

GRANTS OUT OF THE CONSOLIDATED REVENUE.

	£	s.	d.
Under "The Supply Act (No. 1), 1911-12".....	179,829	0	0
Under "The Supply Act (No. 2), 1911-12".....	98,102	0	0
Under this Act	311,575	1	2
	<u>£589,506</u>	<u>1</u>	<u>2</u>

Appropriation, 1911-12.

SECOND SCHEDULE.

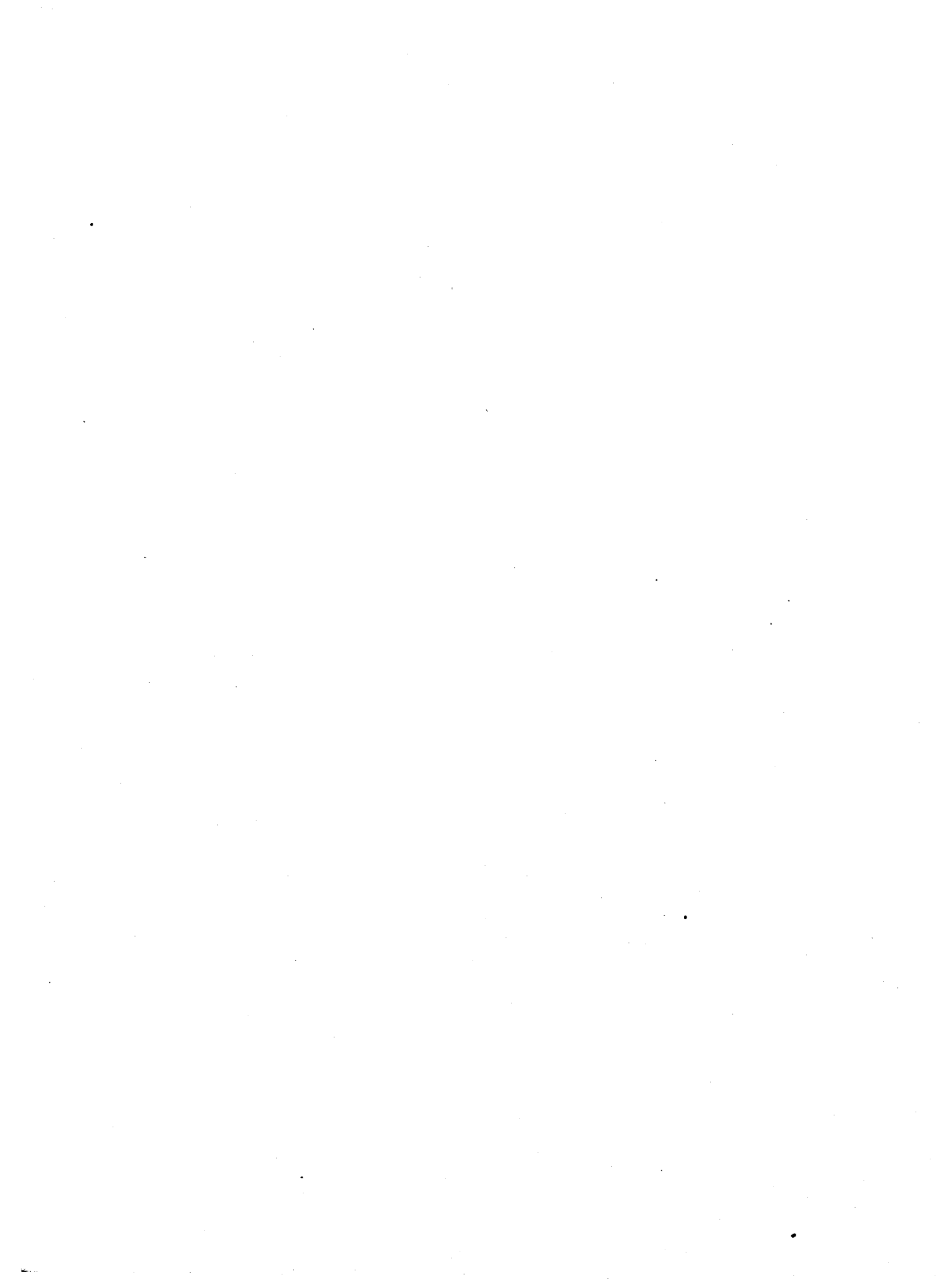
AUTHORISED EXPENDITURE

CHARGEABLE ON

CONSOLIDATED REVENUE FUND

FOR THE YEAR 1911-12.

Departmental Number.		1910-11.			1911-12.			To be reserved by Law.			To be voted.		
		£	s.	d.	£	s.	d.	£	s.	d.	£	s.	d.
PREMIER—													
1	His Excellency the Governor's Establishment	3486	0	0	3494	0	0	3320	0	0	174	0	0
2	Ministerial	3400	0	0	3400	0	0	3200	0	0	200	0	0
3	Premier's Office	542	0	0	555	16	8	555	16	8
4	Agent-General in England	2115	0	0	2155	0	0	1000	0	0	1155	0	0
5	Miscellaneous	150	0	0	160	0	0	160	0	0
CHIEF SECRETARY—													
6	Legislature	12,502	16	8	14,645	0	0	7150	0	0	7495	0	0
7	Chief Secretary's Department	930	0	0	990	16	8	990	16	8
8	Audit Department	3050	0	0	3259	13	10	500	0	0	2759	13	10
9	Statistical & Registration Department	2661	13	4	2772	10	0	2772	10	0
10	Inspection of Machinery, Magazines, &c.....	1985	0	0	2065	0	0	2065	0	0
11	Public Service Board	560	0	0	585	0	0	585	0	0
12	Public Buildings.....	2665	16	8	2521	10	0	2521	10	0
13-17	Charitable and Medical Institutions ..	52,851	15	0	57,049	10	0	57,049	10	0
18	Miscellaneous	6591	0	0	8496	0	0	1750	0	0	6746	0	0
TREASURER—													
19	Treasury	5099	15	0	5299	0	0	5299	0	0
20	Office of Taxes.....	9607	18	4	6277	1	8	6277	1	8
21	Printing Department	13,439	0	0	14,434	16	8	14,434	16	8
22	State Savings Bank.....	2788	15	0	3115	8	4	3115	8	4
23	Miscellaneous	1910	0	0	5087	0	0	5087	0	0
ATTORNEY-GENERAL—													
24-31	Judicial	14,291	0	0	14,526	10	0	4350	0	0	10,176	10	0
32-35	Magistracy	2467	10	0	2465	0	0	2465	0	0
36	Miscellaneous	1860	0	0	1650	0	0	1650	0	0
37	Police	40,839	11	8	42,385	5	6	42,385	5	6
38-40	Gaols	5712	0	0	5677	1	8	5677	1	8
41-42	Education.....	89,064	10	0	92,330	8	4	4000	0	0	88,330	8	4
43	Mines	6315	0	0	8335	0	0	8335	0	0
MINISTER OF LANDS AND WORKS—													
44	Lands and Surveys Department.....	8041	10	0	8482	10	0	8482	10	0
45	Public Works Department	2546	5	0	2666	5	0	2666	5	0
46	Agricultural and Stock Department ..	6534	10	0	6676	3	4	6676	3	4
47	Railways	220,731	10	0	230,107	0	0	900	0	0	229,207	0	0
48	Roads, Bridges, Surveys, &c.	34,910	0	0	31,920	0	0	400	0	0	31,520	0	0
49	Miscellaneous	525	0	0	375	0	0	375	0	0
50	MISCELLANEOUS—General.....	6863	4	1	13,082	0	0	13,082	0	0
PENSIONS, INTEREST, AND SINKING FUNDS—													
51	Pensions	13,103	8	6	13,076	6	10	12,199	13	4	876	13	6
52	Interest	387,551	0	0	406,689	0	0	391,689	0	0	15,000	0	0
53	Sinking Funds	46,236	0	0	49,524	0	0	46,369	0	0	3155	0	0
		£1,013,928	9	3	1,066,324	14	6	476,818	13	4	589,506	1	2



Appropriation, 1911-12.

Premier.

	CLASSIFICATION.		1910-11.			1911-12.			Total Emoluments, including estimated value of allowances not received in cash.
	Class.	Sub-division.	Fixed Establishment.			Fixed Establishment.			
			£	s.	d.	£	s.	d.	£
I.—HIS EXCELLENCY THE GOVERNOR'S ESTABLISHMENT.									
SALARIES.									
1 His Excellency the Governor, including Allowance			2750	0	0	2750	0	0	
2 Office Keeper, Caretaker, and House Bailiff, with Quarters and Uniform, say £26	G 2		116	0	0	124	0	0	150
3 Overseer of Grounds, with Quarters, say £20..			100	0	0	100	0	0	120
			2966	0	0	2974	0	0	
CONTINGENCIES.									
4 Repairs and Furniture Government House, under 4 Ed. VII. No. 10			400	0	0	400	0	0	
5 Stationery, Stores, Fuel, Light, Printing, Newspapers (for offices), Uniform for Office Attendant, and Maintenance of Gas Lamps at Gates			50	0	0	} 120	0	0	
Postal Charges, Telegrams, and Telephones....			70	0	0				
			520	0	0	520	0	0	
<i>Total His Excellency the Governor....</i>			3486	0	0	3494	0	0	
Reserved by Law			£3320	0	0				
To be voted			174	0	0				
			£3494	0	0				
II.—MINISTERIAL.									
SALARIES.									
1 st Premier			200	0	0	200	0	0	
2 Chief Secretary			750	0	0	750	0	0	
3 Treasurer			750	0	0	750	0	0	
4 Attorney-General			750	0	0	750	0	0	
5 Minister of Lands and Works			750	0	0	750	0	0	
			3200	0	0	3200	0	0	
CONTINGENCIES.									
6 Travelling Expenses of Ministers, Carriage Hire, Miscellaneous Expenses, and Entertainment of Distinguished Visitors			200	0	0	200	0	0	
<i>Total Ministerial</i>			3400	0	0	3400	0	0	
Reserved by Law			£3200	0	0				
To be voted			200	0	0				
			£3400	0	0				

Appropriation, 1911-12.

PREMIER—continued.

	CLASSIFICATION.		1910-11.	1911-12.	Total Emoluments, including estimated value of allowances not received in cash.
	Class.	Sub-division.	Fixed Establishment.	Fixed Establishment.	
III.—PREMIER'S OFFICE.					
SALARIES.					
1 Secretary to Premier ; also Clerk to Executive Council	C1		£ 300 0 0	£ 315 0 0	£
2 Clerk, 1 month at £130 & 10 months at £120..	C4a		120 0 0	110 16 8	
			420 0 0	425 16 8	
CONTINGENCIES.					
3 { Stationery and Sundries (including Executive Council)..... Postal Charges, Telegrams, and Telephone Printing			46 0 0	} 130 0 0	
			66 0 0		
			10 0 0		
			122 0 0	130 0 0	
<i>Total Premier's Office</i>			542 0 0	555 16 8	
IV.—AGENT-GENERAL IN ENGLAND.					
SALARIES.					
1 Agent-General.....			1000 0 0	1000 0 0	
2 Secretary and Chief Clerk			300 0 0	315 0 0	
3 Clerk			150 0 0	160 0 0	
4 Junior Clerk			65 0 0	80 0 0	
			1515 0 0	1555 0 0	
CONTINGENCIES.					
5 Travelling and Miscellaneous Expenses ; Stationery, Stores, and Incidental Expenses ; Rent of Office, Postage, Telegrams, and Cablegrams			600 0 0	600 0 0	
<i>Total Agent-General's Department</i>			2115 0 0	2155 0 0	
Reserved by Law			£1000		
To be voted			1155		
			<u>£2155</u>		
V.—MISCELLANEOUS. Premier.					
1 Cost of Parliamentary and other Papers, Samples, and Books, &c. from England and elsewhere.			50 0 0	50 0 0	
2 Cost of Publications, including Photographs, Samples, &c. sent to England and elsewhere..			100 0 0	110 0 0	
			150 0 0	160 0 0	

Appropriation, 1911-12.

Chief Secretary.

	CLASSIFICATION.		1910-11.	1911-12.	Total Emoluments, including estimated value of allowances not received in cash.
	Class.	Sub-division.	Fixed Establishment.	Fixed Establishment	
			£ s. d.	£ s. d.	
Legislature.					
VI.—HOUSES OF PARLIAMENT.					
LEGISLATIVE COUNCIL.					
SALARIES.					
1			350 0 0	350 0 0*	
2			200 0 0	200 0 0*	
3			33 6 8	250 0 0	
4			150 0 0	130 0 0	
			100 0 0		
5			140 0 0	150 0 0	187
6			60 0 0	70 0 0	
			1033 6 8	1150 0 0	
CONTINGENCIES.					
7			80 0 0	100 0 0	
			20 0 0		
			100 0 0	100 0 0	
			1133 6 8	1250 0 0	

Appropriation, 1911-12.

CHIEF SECRETARY—continued.

	CLASSIFICATION.		1910-11.			1911-12.			Total Emoluments, including estimated value of allowances not received in cash.
	Class.	Sub-division.	Fixed Establishment.			Fixed Establishment.			
			£	s.	d.	£	s.	d.	£
HOUSE OF ASSEMBLY.									
SALARIES.									
1			350	0	0	350	0	0*	
2			250	0	0	250	0	0*	
3			400	0	0	400	0	0	
4			100	0	0	100	0	0	
5			187	10	0	180	0	0	
6			150	0	0	160	0	0	198
7			105	0	0	115	0	0	118
8			25	0	0	25	0	0	
			1567	10	0	1530	0	0	
CONTINGENCIES.									
9			500	0	0	300	0	0	
10			120	0	0	120	0	0	
11			47	0	0	70	0	0	
			30	0	0				
			697	0	0	490	0	0	
			2264	10	0	2020	0	0	
GENERAL.									
1			5000	0	0	6000	0	0*	
			8397	16	8	9270	0	0	
ELECTORAL.									
1			780	0	0	2000	0	0	
2			25	0	0	75	0	0	
			805	0	0	2075	0	0	

Appropriation, 1911-12.

CHIEF SECRETARY—continued.

		CLASSIFICATION.		1910-11.			1911-1 .			Total Emoluments, including estimated value of allowances not received in cash.
		Class.	Sub-Division.	Fixed Establishment.			Fixed Establishment.			
				£	s.	d.	£	s.	d.	
AUDIT DEPARTMENT—continued.										
<i>Brought forward</i>				2610	0	0	2839	13	10	
CONTINGENCIES.										
14	Travelling Expenses			350	0	0	330	0	0	
15	{ Stationery, Advertising, and Incidental Expenses Printing Postal Charges, Telegrams, and Telephones...			35	0	0	90	0	0	
				25	0	0				
				30	0	0				
<i>Total Audit Department</i>				£3050	0	0	£3259	13	10	
Reserved by Law				£500	0	0				
To be voted.....				2759	13	10				
				£3259	13	10				
IX.—STATISTICAL AND REGISTRATION DEPARTMENT.										
SALARIES.										
1	Statistician and Registrar-General	PA		600	0	0	600	0	0	
2	Assistant-Statistician, Chief Clerk, and Registrar for Hobart; also Returning Officer, £10....	C2	3	216	13	4	280	0	0	290 0 0
3	Clerk and Deputy-Registrar, Hobart	C3	3	185	0	0	195	0	0	
4	Clerk	C3	3	160	0	0	202	10	0	
5	Clerk	C4a		140	0	0	160	0	0	
6	Clerk	C4a		160	0	0	160	0	0	
7	Clerk, Correspondence			80	0	0	80	0	0	
8	Registrar, Launceston—also Registrar of Mines, Launceston, £180	C3	3	20	0	0	20	0	0	200 0 0
				1561	13	4	1697	10	0	
ALLOWANCES.										
9	To Country Registrars			475	0	0	475	0	0	
CONTINGENCIES.										
10	Registers, Incidental Expenses, Cost of collecting Statistics, Stationery, &c.			125	0	0	100	0	0	
11	{ Printing Postal Charges, Telegrams, and Telephones...			400	0	0	500	0	0	
				100	0	0				
<i>Total Statistical and Registration Department</i>				£2661	13	4	£2772	10	0	
X.—INSPECTION OF MACHINERY, MAGAZINES & EXPLOSIVES DEPARTMENT.										
MACHINERY BRANCH.										
SALARIES.										
1	Chief Inspector of Machinery, also Chief Inspector of Explosives, also Examiner in Steam, say £12	PB	3	335	0	0	335	0	0	347 0 0
2	Assistant-Inspector, also Examiner in Steam, say £5	PC	5	260	0	0	260	0	0	265 0 0
3	Second Assistant-Inspector, also Adviser to Leven Harbour Trust, £50	PC	5	260	0	0	260	0	0	310 0 0
4	Third Assistant-Inspector and Clerk, also Adviser Hobart Corporation on Mechanical Engineering, say £12	PC	5	240	0	0	260	0	0	272 0 0
5	Fourth Assistant-Inspector	PC	5	190	0	0	210	0	0	
<i>Carried forward</i>				1285	0	0	1325	0	0	

Appropriation, 1911-12.

CHIEF SECRETARY—*continued.*

	CLASSIFICATION.		1910-11.	1911-12.	Total Emoluments, including estimated value of allowances not received in cash.
	Class.	Sub-division.	<i>Fixed Establishment.</i>	<i>Fixed Establishment.</i>	
INSPECTION OF MACHINERY—<i>continued.</i>					
<i>Brought forward</i>					
CONTINGENCIES.					
6 Travelling Expenses			370 0 0	370 0 0	
7 { Stationery, Stores, Instruments and Books, Printing, and Incidental Expenses			60 0 0	105 0 0	
{ Postal Charges, Telegrams, and Telephones ..			35 0 0		
			465 0 0	475 0 0	
<i>Total Machinery Branch</i>			£1750 0 0	£1800 0 0	
<i>Estimated Revenue for Services rendered</i>			1600 0 0	1350 0 0	
MAGAZINES AND EXPLOSIVES BRANCH.					
SALARIES.					
1 Inspector, Southern District, with Quarters, Fuel, Light, and Water, say £30	G2		110 0 0	140 0 0	170 0 0
2 Inspector, Northern District; also Caretaker Rifle Range, with Quarters, value £30.					30 0 0
3 Magazine Keeper, Strahan			50 0 0	50 0 0	
CONTINGENCIES.					
4 Travelling Expenses			160 0 0	190 0 0	
5 { Stationery and Stores, Labour, Fuel, Light, Repairs, and Miscellaneous			15 0 0	15 0 0	
{ Postal Charges, Telegrams, and Telephones ...			40 0 0	60 0 0	
{ Printing			15 0 0		
			5 0 0		
			75 0 0	75 0 0	
<i>Total Magazines and Explosives Branch</i>			£235 0 0	265 0 0	
<i>Estimated Revenue for Storage, &c.</i>			600 0 0	500 0 0	
<i>Total Machinery and Explosives</i>			1985 0 0	2065 0 0	
XI.—PUBLIC SERVICE BOARD.					
SALARIES.					
1 Allowances to Members of Board (Chairman, £200; One Member at £50, and One Member at £25)			275 0 0	275 0 0	
2 Secretary to Board and Government Shorthand Writer	C2	1	225 0 0	240 0 0	
			500 0 0	515 0 0	
CONTINGENCIES.					
3 Travelling Expenses			10 0 0	20 0 0	
4 { Stationery, Examiners' Fees, Clerical Assistance, and Miscellaneous Expenses			20 0 0	50 0 0	
{ Printing and Advertising			20 0 0		
{ Postal Charges, Telegrams, and Telephones ...			10 0 0		
			60 0 0	70 0 0	
			£560 0 0	585 0 0	
<i>Estimated Revenue</i>			7 0 0	7 0 0	

Appropriation, 1911-12.

CHIEF SECRETARY—*continued.*

	CLASSIFICATION.		1910-11.	1911-12.	Total Emoluments, including estimated value of allowances not received in cash.	
	Class.	Sub-division.	Fixed Establishment.			
			£	s.		d.
XII.—PUBLIC BUILDINGS.						
SALARIES.						
1 Head Office Keeper, Hobart, House allowance and Uniform, say £37	G1		175	0	0	212
2 Office Keeper Public Buildings, Davey-street, also Messenger Mines and Lands Departments, with Quarters, Fuel, Light, Water, and Uniform, say £33	G2		135	0	0	168
3 Resident Messenger Statistical and Lands Departments, with Quarters, Fuel, Light, Water, and Uniform, say £33	G2		105	0	0	138
4 Messenger Attorney-General's Department, with Quarters, Fuel, Light, Water, and Uniform, say £33	G2		105	0	0	138
5 Messenger Chief Secretary's Department and Health Department, with Quarters, Fuel, Light, Water, and Uniform, say £33	G2		100	0	0	138
6 Messenger Education, with Quarters, Fuel, Light, Water, and Uniform, say £33; also Book Depôt, £20	G2		100	0	0	153
7 Messenger Treasury, with Quarters, Fuel, Light, and Uniform, say £33	G2		100	0	0	138
8 Messenger Lands' Titles	G3		110	0	0	113
9 Messenger Audit and Stores Departments	G3		110	0	0	113
10 Messenger Public Works	G3		110	0	0	113
11 Messenger Solicitor-General and Supreme Court	G3		110	0	0	113
12 Messenger Offices of Taxes and State Savings Bank	G3	} With Uniform, say £3 each	110	0	0	113
13 Messenger Judges	G3		90	0	0	98
14 Messenger Printing Department	G3		100	0	0	108
15 Messenger Chief Secretary's Department	G3		105	0	0	113
16 Junior Messenger (from 1 Sept. in 1910-11)	G4		33	6	8	53
<i>Launceston—</i>			1698	6	8	1730
17 Office Keeper, Launceston—also with Quarters, Fuel, Light, Water, and Uniform, say £33 ..	G2		115	0	0	148
ALLOWANCES.			1813	6	8	1845
18 Head Office Keeper—House allowance £35 per annum (from 1st October in 1910-11).....			26	5	0	35
CONTINGENCIES.						
19 Fuel, Light (and Water in 1910-11), Public Offices, Hobart			600	0	0	400
20 Fuel, Light, and Water, ditto, Launceston			125	0	0	125
<i>Carried forward</i>			725	0	0	525

Appropriation, 1911-12.

CHIEF SECRETARY—*continued.*

CHARITABLE DEPARTMENT— <i>continued.</i>	CLASSIFICATION.		1910-11.	1911-12.	Total Emoluments, including estimated value of allowances not received in cash
	Class.	Sub-division.	Fixed Establishment.	Fixed Establishment.	
<i>Brought forward</i>			£ s. d. 665 0 0	£ s. d. 425 0 0	£
CONTINGENCIES.					
6 Out-door Relief, Medical Attendance on Destitute Persons, and Maintenance of Destitute Persons not otherwise provided for.....			2200 0 0	2200 0 0	
7 Maintenance of Deaf, Dumb, and Blind Children, Maintenance of Destitute Persons in Country Hospitals, Examination of Insane, Stationery and Stores, Clerical Assistance, and Miscellaneous Expenses			500 0 0	400 0 0	
8 Transport and Funeral Expenses			250 0 0	300 0 0	
9 { Postal Charges, Telegrams, and Telephones ..			80 0 0	60 0 0	
{ Printing			15 0 0		
10 Treatment of Advanced Cases of Consumption			250 0 0	250 0 0	
			3295 0 0	3210 0 0	
<i>Total Charitable Department</i>			£3960 0 0	£3635 0 0	
DESTITUTE AND NEGLECTED CHILDREN.					
1 Maintenance of Destitute Children under the Boarding-out System			1450 0 0	1550 0 0	
CONTINGENCIES.					
Rations, Fuel and Light, and Miscellaneous ...			5 0 0		
<i>Contributions towards Children detained in the under-mentioned Institutions.</i>					
2 Boys' Home, Hobart			310 0 0	310 0 0	
3 Industrial School for Females, Hobart			250 0 0	250 0 0	
4 St. Joseph's Orphanage, Hobart.....			190 0 0	200 0 0	
5 Industrial School for Females, Launceston, including payment of Teachers' Salaries....			210 0 0	240 0 0	
			960 0 0	1000 0 0	
FREE SCHOOLS, SIX MONTHS ONLY, 1910-11.					
Cascades School, Watchorn-street School, Lower Collins-street School, Hobart			150 0 0		
St. Luke's School, Hobart			25 0 0		
			175 0 0		
<i>Total Neglected Children</i> ..			£2590 0 0	£2550 0 0	

Appropriation, 1911-12.

CHIEF SECRETARY—continued.

	CLASSIFICATION.		1910-11.			1911-12.			Total Emoluments, including estimated value of allowances not received in cash.
	Class.	Sub-division.	Fixed Establishment.			Fixed Establishment.			
CHARITABLE DEPARTMENT—continued.									
‡ GRANTS TO CHARITABLE INSTITUTIONS.									
1 Benevolent Society, Hobart			£	s.	d.	£	s.	d.	£
2 Benevolent Society, Launceston			200	0	0	200	0	0	
3 Blind Asylum, Hobart			200	0	0	200	0	0	
4 Braille Society			300	0	0	300	0	0	
5 Home for Invalids, Launceston			20	0	0	20	0	0	
			750	0	0	750	0	0	
<i>Total Grants to Charitable Institutions..</i>			£1470	0	0	£1470	0	0	
‡ GRANTS TO MEDICAL INSTITUTIONS.									
<i>Fixed Grants—</i>									
1 General Hospital, Hobart			5000	0	0	5000	0	0	
2 General Hospital, Launceston			5000	0	0	5000	0	0	
3 Alexandra Hospital, Hobart			100	0	0	100	0	0	
4 Queen Victoria Hospital, Launceston			100	0	0	100	0	0	
5 Sanatorium, New Town			150	0	0	150	0	0	
6 Devon Hospital (Latrobe)			700	0	0	700	0	0	
<i>Conditional Grants—</i>									
7 General Hospital, Hobart	} £1 for every £1 raised by subscription or fees during the year up to the sum voted by Parliament.		1600	0	0	1600	0	0	
8 General Hospital, Launceston			1600	0	0	1600	0	0	
9 Hospital, Zeehan			500	0	0	500	0	0	
10 Ditto, Queenstown			500	0	0	500	0	0	
11 Ditto, Beaconsfield			200	0	0	200	0	0	
12 Ditto, Devon (Latrobe)			300	0	0	300	0	0	
13 Ditto, Strahan			50	0	0	100	0	0	
14 Ditto, Mount Bischoff (Waratah)			100	0	0	100	0	0	
15 Ditto, Campbell Town			100	0	0	100	0	0	
16 Ditto, Tullah			100	0	0	100	0	0	
17 Ditto, Ulverstone			100	0	0	100	0	0	
18 Cottage Hospital, New Norfolk						100	0	0	
19 Homœopathic Hospital, Hobart				250	0	0	*250	0	0
20 Ditto, Launceston			200	0	0	200	0	0	
<i>Contingent Grant—</i>									
21 Infectious Diseases Hospitals—Contributions to Municipalities			..			400	0	0	
<i>‡ Total Grants to Medical Institutions</i>			£16,650	0	0	£17,200	0	0	
<i>Total Administration, &c.</i>			£24,670	0	0	£24,855	0	0	

*On basis of Subscriptions and Fees raised during the twelve months ending 30th June, 1911.

† The payment of these moneys to be subject to the furnishing of annual reports and balance-sheets, together with such other information as may be required by the Chief Secretary.

Appropriation, 1911-12.

CHIEF SECRETARY—continued.

	CLASSIFICATION.		1910-11.			1911-12.			Total Emoluments, including estimated value of allowances not received in cash.
	Class.	Sub-division.	Fixed Establishment.			Fixed Establishment.			
			£	s.	d.	£	s.	d.	
XIV.—NEW TOWN INFIRMARY AND CONSUMPTIVE HOME.									
SALARIES.									
1 Superintendent, also Superintendent Training School for Boys—with Quarters, Fuel, Light, and Water, say £70			See XIII.			310	16	8*	380 16 8
2 Clerk up to 31st August, 1911			8	6	8	
3 Clerk at £80 from 1st September			66	13	4	
4 Overseer—with Quarters, Fuel, Light, Uniform, £27	G2		100	0	0	110	16	8*	137 16 8
5 Head Warder and Storekeeper—with Quarters, Fuel, Light, and Uniform, £27	G2		80	0	0	160	16	8*	187 16 8
6 Two Warders—with Quarters, Fuel, Light, and Uniform, £16 each	G3		140	0	0	163	6	3†	195 6 8
7 Night Warder—with Quarters, Fuel, Light, and Uniform, £16			71	13	4†	87 13 4
Male and Female Attendants			260	0	0				
8 Allowances to Inmates for Services rendered in Government Institutions			220	0	0	
9 Matron—with Quarters, Fuel and Light, and Attendance, £45	PD	5	100	0	0	100	0	0	145
10 Head Nurse—with Quarters, Fuel and Light, Uniform and Board, £20	G4		40	0	0	40	0	0	60
11 Nurses—Six at £30 each, with Quarters, Fuel, Light, Uniform, and Board, £20 each	G4		180	0	0	180	0	0	300
12 Cook—with Quarters, Fuel, Light, Uniform, and Board, £20	G4		52	0	0	52	0	0	72
			952	0	0	1484	10	0	
CONTINGENCIES.									
13 Stores, Stationery, Clothing, and Bedding, Provisions, Fuel, Light, Medicines and Medical Comforts, Miscellaneous, including Funeral Expenses, Repairs, including Fencing			3000	0	0	2650	0	0	
14 Postages, Telegrams, Telephones, and Printing			28	0	0	
			3000	0	0	2678	0	0	
<i>Total New Town Infirmary, &c.</i>			£3952	0	0	£4162	10	0	
<i>Estimated Revenue for Services, &c.</i>			285	0	0	320	0	0	

* Cash allowance at rate of £13 per annum, added to Salary in lieu of Rations, from 1st September, 1911.

† Cash allowance at rate of £14 per annum, added to Salary in lieu of Rations, from 1st September, 1911.

Appropriation, 1911-12.

CHIEF SECRETARY—continued.

	CLASSIFI- CATION.		1910-11.			1911-12.			Total Emoluments, including esti- mated value of allowances not received in cash.
	Class.	Sub- division.	Fixed Establishment.			Fixed Establishment.			
			£	s.	d.	£	s.	d.	
XV.—TRAINING SCHOOL FOR BOYS, AND FARM.									
SALARIES.									
1									
2									
3	G2		100	0	0	110	16	8*	150
4	G2		90	0	0	100	16	8*	130
5	G4		40	0	0	40	0	0	60
			15	0	0	15	0	0	
			50	0	0				
			295	0	0	266	13	4	
ALLOWANCES.									
6			26	0	0	26	0	0	
CONTINGENCIES.									
7			650	0	0	500	0	0	
8						15	0	0	
						515	0	0	
			£971	0	0	807	13	4	
			80	0	0	66	0	0	
<i>Total Training School for Boys, and Farm</i>									
<i>Estimated Revenue for Services, &c.....</i>									

* Cash allowance, at rate of £13 per annum, added to Salaries from 1st September, 1911, in lieu of Rations.

Appropriation, 1911-12.

CHIEF SECRETARY—*continued.*

	CLASSIFICATION.		1910-11.		1911-12.		Total Emoluments, including estimated value of allowances not received in cash.	
	Class.	Sub-division.	Fixed Establishment.		Fixed Establishment.		£	s. d.
XVI.—HOSPITAL FOR THE INSANE, NEW NORFOLK.								
SALARIES.								
1 Superintendent and Medical Officer— with Quarters, Fuel, and Light, say £77 a year..	PA		550	0 0	550	0 0	627	0 0
2 Assistant Medical Officer—Furnished Quarters, Fuel, and Light, £53	PB	4	325	0 0	325	0 0	378	0 0
3 Second Assistant Medical Officer—£240 per annum from 1 January, 1912	P				120	0 0		
4 Clerk and Storekeeper	C3	3	187	10 0	195	0 0		
5 Clerk	C4a		160	0 0	120	0 0		
6 Engineer	PC	3	200	0 0	220	0 0		
7 Chief Attendant—Fuel and Light, Uniform, House, Rations, &c. £50	G1		160	0 0	170	0 0	220	0 0
8 First Senior Attendant—Fuel and Light, Uniform, House, Rations, &c., £50.....	G2		125	0 0	135	0 0	185	0 0
9 Second Senior Attendant—Uniform £5	G2		127	0 0	137	0 0	142	0 0
10 Third Senior Attendant—Uniform and Ration, £20	G3		100	0 0	110	0 0	130	0 0
11 Matron—Furnished Quarters, Fuel, Light, Board, and Attendance, £63	PC	2	150	0 0	150	0 0	213	0 0
12 Sub-Matron—Furnished Quarters, Fuel, Light, Board and Attendance, £57	G2		110	0 0	120	0 0	177	0 0
13 Working Farm Overseer—House, Fuel, and Light, £27			105	0 0	110	0 0	137	0 0
14 Chairman of Official Visitors.	P		52	0 0	52	0 0		
			2351	10 0	2514	0 0		
ATTENDANTS.								
15 Gatekeeper—Ration and Uniform, £18 8s.			85	0 0	95	0 0	113	8 0
16 Carpenter—Uniform, £3 4s.			106	0 0	116	0 0	119	4 0
17 Painter and Plumber—Uniform, £3 4s.			106	0 0	116	0 0	119	4 0
18 Painter, extra—Uniform, £3 4s.			92	0 0	102	0 0	106	4 0
19 Shoemaker—Rations, Lodging, & Uniform, £28 8s.			80	0 0	90	0 0	118	8 0
20 Tailor—Uniform, £3 5s			90	0 0	100	0 0	103	5 0
21 Cook—Uniform and Rations, £17 6s.			95	0 0	110	0 0	127	6 0
22 Cook, Assistant—Uniform and Rations, £17 6s.			80	0 0	90	0 0	107	6 0
23 Baker—Uniform and Rations, £15			100	0 0	122	0 0	137	0 0
24 Baker, Assistant—Uniform and Rations, £15..			26	0 0	43	0 0	58	0 0
25 Gardener—Uniform and Rations, £18 8s.			75	0 0	85	0 0	103	8 0
26 Ploughman—Uniform, Ration, & Lodging, £28 8s.			70	0 0	80	0 0	108	8 0
27 Milkman—Quarters & Uniform, £16 8s... ..			82	0 0	92	0 0	108	8 0
28 Messenger—Uniform and Ration, £18 8s			80	0 0	95	0 0	113	8 0
29 Storeman—Lodging, Ration, & Uniform, £28 8s.			70	0 0	80	0 0	108	8 0
30 Senior Night Attendant—Uniform, £3 5s.			102	0 0	112	0 0	115	7 0
31 Five Night Attendants, 2 at £102 each, 3 at £97—Uniform, £3 7s. each			440	0 0	495	0 0	511	16 0
32 Attendant in Charge of Sick Ward—Rations, Uniform, and Lodging, £28 8s.			80	0 0	80	0 0	108	8 0
<i>Carried forward</i>			1859	0 0	2103	0 0		

Appropriation, 1911-12.

CHIEF SECRETARY--continued.

	CLASSIFICATION.		1910-11.	1911-12.	Total Emoluments, including estimated value of allowances not received in cash.
	Class.	Sub-division.	Fixed Establishment.	Fixed Establishment.	
			£ s. d.	£ s. d.	
HOSPITAL FOR INSANE, NEW NORFOLK—					
<i>continued.</i>					
<i>Brought forward</i>			1859 0 0	2103 0 0	
33	Eighteen Attendants from £80 to £90, with Uniform and Rations, £18 8s. each		1290 0 0	1469 11 8	1801 7 8
34	Twelve Attendants, from £65 to £85, nine with Lodging, Uniform, and Rations, £28 8s. each; three with Uniform and Rations, £18. 8s. each		792 18 11	878 6 8	1189 10 8
35	Ten Attendants from £65 to £75, 5 with Rations, Lodgings, and Uniform, £28 8s. each; 5 with Rations and Uniform, £18 8s. each	700 0 0	934 0 0
	Eight Attendants, from £56 to £70, with Rations and Uniform, £18 8s. each		506 6 10	..	
36	Stokers, three, at £112 (two in 1910-11). Uniform, £2 19s. each		204 0 0	336 0 0	344 17 0
37	Nurses and Laundresses, forty-six, from £35 to £80, with Lodgings, Uniform, and Rations, £28 9s. each	2298 0 0	3607 0 0
	Nurses and Laundresses, forty-four, from £35 to £70, with Lodgings, Uniform, and Rations, £28 14s. each		1914 19 3	..	
38	Nurse, one, at £40, for Special Cases, with Lodging, Uniform, and Rations, £28 14s....		35 0 0	35 8 4	64 8 4
			6602 5 0	7820 6 8	
ALLOWANCES.			8953 15 0	10,334 6 8	
39	Barber, for duties in connection with Morgue ..		9 0 0	9 0 0	
CONTINGENCIES.					
40	Travelling Expenses of Special Visitors ...		20 0 0	20 0 0	
41	Uniforms; Patients' Recreation and Petty Expenses; Provisions; Medical Comforts; Bedding, Clothing, Stores, Stationery, &c.; Fuel and Light; Conveyance of Stores; Medicines; Incidental Expenses, including Furniture and Advertising; Coroner's Inquests and Funeral Expenses; Repairs to Buildings; <i>Locum Tenens</i> for Medical Officers, Engineers, Attendants, Stokers, and Nurses		11,936 0 0	13,306 0 0	
42	} Postal Charges, Telegrams, and Telephones..		55 0 0	} 90 0 0	
	} Printing		45 0 0		
43	Special Repairs.....		600 0 0	1000 0 0	
44	Extra Boiler in connection with Electric Light Plant.....		..	600 0 0	
<i>Total Hospital for Insane</i>			12,656 0 0	15,016 0 0	
			21,618 15 0	25,359 6 8	
<i>Estimated Revenue for Services</i> ..			4700 0 0	4500 0 0	

Appropriation, 1911-12.

CHIEF SECRETARY—continued.

	CLASSIFI- CATION.		1910-11.			1911-12.			Total Emoluments, including esti- mated value of allowances not received in cash.
	Class.	Sub- division.	Fixed Establishment.			Fixed Establishment.			
			£	s	d.	£	s	d.	
XVII.—PUBLIC HEALTH DEPARTMENT.									
SALARIES.									
1 Chief Health Officer, also Chief Quarantine Officer	PA		600	0	0	600	0	0	
Medical Officer for all Government Departments, Hobart			100	0	0	See XIII.			
2 Inspector, Sanitary; also Chief Inspector of Food and Drugs	PC4		230	0	0	240	0	0	
Clerk (two months, 1910-11, at £150)	C 4a		25	0	0				
3 Clerk and Secretary to Wages Board	C 3	1				180	0	0	
Clerk and Sanitary Inspector	C 4b		120	0	0				
4 Clerk £40 to December 31, £50 from Jan. 1..	C 4b					45	0	0	
			1075	0	0	1065	0	0	
ALLOWANCES.									
5 Caretaker Isolation Hospital, Kings Meadows ..			30	0	0	30	0	0	
CONTINGENCIES.									
6 Travelling Expenses			150	0	0	300	0	0	
7 Contribution to Cost of Administering Public Health and other Acts			300	0	0	350	0	0	
8 { Postal Charges, Telegrams, and Telephones....			45	0	0	120	0	0	
{ Printing			40	0	0				
			535	0	0	770	0	0	
<i>Total Public Health Department</i>			1640	0	0	1865	0	0	
<i>Estimated Revenue for Services</i>			250	0	0	510	0	0	
TOTAL CHARITABLE AND MEDICAL INSTITUTIONS			52,851	15	0	57,049	10	0	

Appropriation, 1911-12.

CHIEF SECRETARY—continued.

	CLASSIFICATION		1910-11.			1911-12.			Total Emoluments, including estimated value of allowances not received in cash.
	Class.	Sub-division.	Fixed Establishment.			Fixed Establishment.			
			£	s.	d.	£	s.	d.	£
XVIII.—MISCELLANEOUS.									
1			*500	0	0	*500	0	0	
2			†150	0	0	†150	0	0	
3			*800	0	0	*800	0	0	
4			55	0	0	60	0	0	
5			‡300	0	0	‡350	0	0	
6			150	0	0	150	0	0	
7									
8			300	0	0	300	0	0	
9			1400	0	0	1200	0	0	
9			20	0	0	20	0	0	
<i>In aid of Tourist Associations—</i>									
10			300	0	0	300	0	0	
11			300	0	0	300	0	0	
12			200	0	0	200	0	0	
13			400	0	0	400	0	0	
14			150	0	0	150	0	0	
15			40	0	0	50	0	0	
16			70	0	0	60	0	0	
17			656	0	0	656	0	0	
18			120	0	0	120	0	0	
19			30	0	0	30	0	0	
20			650	0	0	650	0	0	
21			..			1200	0	0	
22			..			350	0	0	
23			..			500	0	0	
<i>Total Miscellaneous</i>			£6591	0	0	8496	0	0	
<i>Contribution by Federal Government for Analysis of Articles for Commonwealth Departments</i>			250	0	0	250	0	0	
*Reserved by Law, 49 Vict.									
			£1300	0	0				
†			150	0	0				
‡			300	0	0				
†			6746	0	0				
			£8496	0	0				

Appropriation, 1911-12.

Treasurer.

		CLASSIFICATION.		1910-11.			1911-12.			Total Emoluments, including estimated value of allowances not received in cash.
		Class.	Sub-division.	Fixed Establishment.			Fixed Establishment.			
XIX.—TREASURY.										
SALARIES.										
1	Under-Treasurer, also acting Secretary Public Debts Sinking Fund, £50 (and Permanent Head Commonwealth Sub-Treasury).....	C1		£	s.	d.	£	s.	d.	£
				550	0	0	550	0	0	600
2	Accountant (also Commonwealth Sub-Treasury)	C1		380	0	0	380	0	0	
3	Receiver and Paymaster (also Commonwealth Sub-Treasury)	C2	6	360	0	0	360	0	0	
4	Cashier, Pay Branch	C2	4	320	0	0	320	0	0	
5	Cashier, Revenue Branch	C2	4	320	0	0	320	0	0	
6	Clerk	C2	1	260	0	0	260	0	0	
7	Clerk	C3	5	225	0	0	240	0	0	
8	Clerk	C3	3	195	0	0	210	0	0	
9	Clerk	C3	2	180	0	0	195	0	0	
10	Clerk	C3	1	160	0	0	180	0	0	
11	Clerk	C4a		130	0	0	140	0	0	
12	Clerk	C4a		130	0	0	140	0	0	
13	Clerk, £50 to 31 December, £65 from 1 January	C4a		86	5	0	57	10	0	
14	Clerk, £50 to 28 February, £65 from 1 March	C4b		45	0	0	55	0	0	
15	Clerk, £40 to 31 December, £50 from 1 January	C4b		41	0	0	45	0	0	
				3382	5	0	3452	10	0	
IMPERIAL PENSIONS BRANCH.										
16	Paymaster; also Actuary State Savings Bank, £250, and Manager Agricultural Bank	C2	6	100	0	0	100	0	0	350
				3482	5	0	3552	10	0	
CONTINGENCIES.										
17	Stationery & Miscellaneous Expenses, including Clerical Assistance and Overtime (and Purchase of Type-writer, 1910-11).....			140	0	0	} 535	0	0	
				80	0	0				
				340	0	0				
				560	0	0	535	0	0	
STORES BRANCH.										
Salaries—										
18	Inspector of Stores and Secretary Board of Tenders	C2	4	320	0	0	320	0	0	268
19	Chief Clerk, also Assistant Returning Officer, £8	C2	1	240	0	0	260	0	0	
20	Storekeeper (with Quarters, Fuel, and Light, say £30).....	C4a		130	0	0	130	0	0	160
21	Clerk, £50 to 30 April, £65 from 1 May	C4b		62	10	0	52	10	0	
22	Clerk	C4a		60	0	0	
23	Storeman	G3		130	0	0	140	0	0	
				882	10	0	962	10	0	
Contingencies—										
24	Travelling Expenses			30	0	0	30	0	0	
25	Stationery, Stores, Conveyance, and Miscellaneous Expenses, including Clerical Assistance Postal Charges, Telegrams, and Telephones... Printing			80	0	0	} 219	0	0	
				40	0	0				
				25	0	0				
				175	0	0	249	0	0	
				1057	10	0	1211	10	0	
<i>Total Treasury (including Stores) ..</i>				£5099	15	0	5299	0	0	
<i>Estimated Revenue for Services</i>				575	0	0	575	0	0	

Appropriation, 1911-12.

TREASURER—continued.

	CLASSIFICATION.		1910-11.		1911-12.		Total Emoluments, including value of allowances not received in cash.	
	Class.	Sub-division.	Fixed Establishment.		Fixed Establishment.			
XX.—OFFICE OF TAXES.								
SALARIES.								
1 Commissioner and Collector, also Trustee Agricultural Bank, £26	C1		£	s.	d.	£	526	
2 District Deputy-Commissioner, Launceston	C1		475	0	0	500	0	0
3 Chief Clerk	C2	5	340	0	0	360	0	0
4 Clerk	C2	1	330	0	0	340	0	0
5 Clerk	C2	1	240	0	0	260	0	0
6 Clerk	C3	5	210	0	0	240	0	0
7 Clerk	C3	4	195	0	0	210	0	0
8 Clerk	C3	3	195	0	0	210	0	0
9 Clerk, also Assistant Returning Officer, say £5	C3	4	215	0	0	215	0	0
10 Clerk	C3	4	210	0	0	225	0	0
11 Clerk	C3	3	195	0	0	210	0	0
12 Clerk	C3	1	160	0	0	180	0	0
13 Clerk	C3	1	180	0	0	180	0	0
14 Clerk	C4a		180	0	0	180	0	0
15 Clerk, £110 to 30 Nov., £120 from 1 Dec. ...	C4a		160	0	0	160	0	0
16 Clerk, £95 to 31 Jan., £110 from 1 Feb. . .	C4a		130	0	0	115	16	8
17 Clerk, £50 to 28 Feb., £65 from 1 Mar.	C4b		86	5	0	101	5	0
18 Clerk	C4b		36	13	4	55	0	0
			...			50	0	0
			3537	18	4	3792	1	8
CONTINGENCIES.								
19 Travelling Expenses			30	0	0	35	0	0
20 Stationery, Cost of Collection of Rates and Taxes, Advertising, Incidental Expenses, &c..			240	0	0	200	0	0
21 Clerical Assistance (including overtime) and Expenses in connection with Land Valuation and Income Tax Acts, and to provide additional Staff			4600	0	0	1300	0	0
22 Printing Valuation Rolls, &c.			600	0	0	450	0	0
23 Postal charges, Telegrams, and Telephones			600	0	0	500	0	0
			6070	0	0	2485	0	0
<i>Total Office of Taxes</i>			9607	18	4	6277	1	8
XXI.—PRINTING DEPARTMENT.								
SALARIES.								
1 Government Printer	PA		500	0	0	500	0	0
2 Overseer	G1		265	0	0	280	0	0
3 Accountant	C3	5	225	0	0	240	0	0
4 Clerk	C4b		110	0	0	110	0	0
5 Clerk, £40 from 1 Aug. to 31 Jan., £50 from 1 Feb.	C4b		...			40	16	8
6 Foreman	G2		200	0	0	210	0	0
7 Foreman Machinist	G2		174	0	0	174	0	0
			1474	0	0	1554	16	8
8 Wages to Establishment			7500	0	0	8000	0	0
CONTINGENCIES.								
9 Paper, Stationery, Stores, Fuel and Light, New Type, Fittings, &c., Repairs to Machinery, Presses, &c., Petty Expenses, &c., including provision for annual picnic of employes			3800	0	0	4200	0	0
9 } Postal charges, Telegrams, and Telephones			115	0	0	180	0	0
9 } Printing			50	0	0			
0 New Plant			500	0	0	500	0	0
			4465	0	0	4880	0	0
<i>Total Printing Department</i>			13,439	0	0	14,434	16	8
<i>Estimated Revenue for Services</i>			14,500	0	0	16,000	0	0

Appropriation, 1911-12.

TREASURER—continued.

	CLASSIFICATION.		1910-11.			1911-12.			Total Emoluments, including estimated value of allowances not received in cash.
	Class.	Sub-division.	Fixed Establishment.			Fixed Establishment.			
			£	s.	d.	£	s.	d.	£
XXII.—STATE SAVINGS BANK.									
SALARIES.									
1 Actuary and Secretary to Trustees, also Paymaster Imperial Pensions, £100, and Manager Agricultural Bank	C2	6	230	0	0	250	0	0	350
2 Chief Clerk and Accountant	C2	1	210	0	0	225	0	0	
3 Teller	C3	2	195	0	0	195	0	0	
4 Clerk and Ledger-keeper	C3	2	130	0	0	140	0	0	
5 Clerk	C4a		120	0	0	130	0	0	
6 Clerk	C4a		110	0	0	120	0	0	
7 Clerk	C4b		95	0	0	
8 Clerk, £80 to 31 July, £95 from 1 August ...	C4b		78	15	0	93	15	0	
9 Clerk	C4b		65	0	0	80	0	0	
10 Clerk, from 1st September	C4b		36	13	4	
			1138	15	0	1365	8	4	
CONTINGENCIES.									
11 Stationery, Printing, and Sundries			250	0	0	300	0	0	
12 Commission to Postal Department on Country Business			1050	0	0	1100	0	0	
13 Postal charges, Telegrams, and Telephones ... Expenses opening new Ledgers and calculating Interest			300	0	0	350	0	0	
			50	0	0	
			1650	0	0	1750	0	0	
<i>Total State Savings Bank</i>			2788	15	0	3115	8	4	
<i>Profit on Savings Bank</i>			4155	0	0	4783	0	0	
XXIII.—MISCELLANEOUS.									
1 Commission and all Charges in London for payment of Principal and Interest on Inscribed Stock, Debentures, and Treasury Bills			1000	0	0	1625	0	0	
2 Cost of Exchange and Stamp Duty on Remittances to London and elsewhere, and discounting Drafts			250	0	0	2750	0	0	
3 For payment of Premiums on Guarantee Policies for Officers entrusted with collection of Government moneys			50	0	0	50	0	0	
4 "The Merchant Ships Officers' Examination Act," expenses, &c.			60	0	0	60	0	0	
5 Salary of Government Pamphleteer and Reviser of State Publications			250	0	0	250	0	0	
6 Allowance to Mr. M. McDonough, one of the discoverers of Mt. Lyell Mine			100	0	0	100	0	0	
7 Allowance to Mr. G. Renison Bell, discoverer of tin on North-East Coast			100	0	0	100	0	0	
8 Allowance to Mr. G. Meredith one of the discoverers of Tin at Mt. Heemskirk			50	0	0	50	0	0	
9 Allowance to Mr. Owen Meredith, one of the discoverers of Tin at Mt. Heemskirk			50	0	0	50	0	0	
10 Allowance to Mr. Thomas Currie, Prospector, West Coast	52	0	0	
<i>Total Miscellaneous</i>			1910	0	0	5087	0	0	

Appropriation, 1911-12.

Attorney-General.

Judicial Departments.		CLASSIFICATION.		1910-11.		1911-12.		Total Emoluments, including estimated value of allowances not received in cash.		
		Class.	Sub-division.	Fixed Establishment.		Fixed Establishment.		£ s. d.		
XXIV.—ATTORNEY-GENERAL.										
SALARIES.										
1	Secretary to Attorney-General; also Secretary Board of Examiners, £2 2s.	C3	3	£	s.	d.	£	s.	d.	197 2 0
2	Clerk, 1 month at £65, 6 months at £40, 3 months £50	C4b		61	5	0	40	0	0	
				241	5	0	235	0	0	
CONTINGENCIES.										
3	Travelling Expenses of Law Officers.....			50	0	0	50	0	0	
4	Stationery, Miscellaneous, and Incidental Expenses, Clerical Assistance, Defending Pauper Prisoners, Law Books, Binding, Newspapers, Advertising.....			100	0	0	180	0	0	
				50	0	0				
				40	0	0				
				240	0	0	230	0	0	
				481	5	0	£465	0	0	
<i>Total Attorney-General's Department....</i>										
XXV.—PARLIAMENTARY DRAFTSMAN.										
SALARY.										
1	Parliamentary Draftsman; also Returning Officer, £8 10s., and member Mining Board, £25	PA		£360	0	0	360	0	0	393 10 0
XXVI.—SOLICITOR-GENERAL.										
SALARIES.										
1	Solicitor-General; also Chairman Mining Board, £50, and member Public Service Board, £25	PA		600	0	0	600	0	0	676 0 0
2	Clerk to the Solicitor-General	PD	6	160	0	0	160	0	0	
3	Crown Solicitor; also Registrar Building Societies Fees, say £5 5s.			372	10	0	385	0	0	390 5 0
4	Clerk of the Peace; also Clerk in Charge Crown Solicitor's Office	PB	1	260	0	0	285	0	0	
				1392	10	0	1430	0	0	
CONTINGENCIES.										
5	Stationery, Clerical and other Assistance			15	0	0	70	0	0	
				20	0	0				
				35	0	0				
				70	0	0	70	0	0	
				1462	10	0	1500	0	0	
<i>Total Solicitor-General's Department ..</i>										
<i>Estimated Revenue for Services rendered.</i>										
				150	0	0	150	0	0	
				£450	0	0				
				1050	0	0				
				£1500	0	0				

Appropriation, 1911-12.

ATTORNEY-GENERAL—continued.

	CLASSIFICATION.		1910-11.			1911-12.			Total Emoluments, including estimated value of allowances not received in cash.
	Class.	Sub-division.	Fixed Establishment.			Fixed Establishment.			
			£	s.	d.	£	s.	d.	£
XXVII.—THE JUDGES.									
SALARIES.									
1 Chief Justice			1500	0	0	1500	0	0	
2 Puisne Judge			1200	0	0	1200	0	0	
3 Puisne Judge			1200	0	0	1200	0	0	
4 Judges' Associate			175	0	0	175	0	0	
			4075	0	0	4075	0	0	
CONTINGENCIES.									
5 Travelling Expenses of Judges and Officers attending the Circuit Courts and Incidental Expenses			250	0	0	250	0	0	
6 { Stationery, and Advertising Claims to Grants			14	0	0	} 54	0	0	
{ Postal Charges, Telegrams, and Telephones...			20	0	0				
{ Printing			20	0	0				
			304	0	0	304	0	0	
<i>Total Judges</i>			4379	0	0	4379	0	0	
Reserved by Law (18 Vict. No. 17 & 50 Vict. No. 36)			£3900	0	0				
To be voted			479	0	0				
			£4379	0	0				
XXVIII.—SUPREME COURT, REGISTRY OF DEEDS, PROBATE DUTIES, AND STAMP DUTIES.									
SALARIES.									
1 Registrar of Supreme Court, Registrar of Deeds, Collector of Probate Duties and Commissioner and Collector of Stamp Duties; also District Registrar, High Court. Fees, say £75	PA		550	0	0	550	0	0	625
2 Chief Clerk; also Returning Officer, £40	C2	5	340	0	0	340	0	0	380
3 Clerk; also Clerk to Deputy Returning Officer, £12	C3	4	195	0	0	210	0	0	222
4 Clerk	C3	3	180	0	0	195	0	0	
5 Clerk	C4b		160	0	0	95	0	0	
6 Clerk (£45 to 31 December, £50 from 1 January)	C4b		80	0	0	45	0	0	
			1505	0	0	1485	0	0	
CONTINGENCIES.									
7 { Stationery, Incidental Expenses, Allowance for Spoiled Stamps, &c.			60	0	0	} 235	0	0	
{ Printing			75	0	0				
{ Postal Charges, Telegrams, and Telephones ..			90	0	0				
8 Commission on Sale of Revenue Stamps at Official Post Offices			80	0	0	80	0	0	
			305	0	0	315	0	0	
<i>Total Supreme Court</i>			1810	0	0	1750	0	0	

Appropriation, 1911-12.

ATTORNEY-GENERAL—*continued*

	CLASSIFICATION.		1910-11.	1911-12.	Total Emoluments, including estimated value of allowances not received in cash.
	Class.	Sub-division.	Fixed Establishment.	Fixed Establishment.	
XXIX.—LANDS' TITLES.					
SALARIES.					
<i>Professional Staff.</i>					
1 Recorder of Titles, Collector of Stamp Duties, Registrar of Public Trusts, and Commissioner of Public Debts Sinking Fund; also Trustee Agricultural Bank, £26	PA		600 0 0	600 0 0	626
2 Solicitor to Lands' Titles Commissioners	PB	3	285 0 0	310 0 0	
3 Deputy-Recorder of Titles, Chief Clerk, and Draftsman	PA		385 0 0	385 0 0	
4 Draftsman	PB	1	260 0 0	285 0 0	
5 Draftsman	PC	4	220 0 0	240 0 0	
6 Draftsman ..	PD		160 0 0	160 0 0	
7 Draftsman ..	PD		120 0 0	140 0 0	
<i>Clerical Staff.</i>					
8 Accountant, Receiving, and Corresponding Clerk, (1 month at £180, 10 months at £210 in 1910-11)	C3	5	190 0 0	225 0 0	
9 Clerk (Indexing), (1 month at £160, 11 months at £150 in 1910-11)	C3	2	150 16 8	160 0 0	
10 Engrossing Clerk	C4a		190 0 0	190 0 0	
11 Clerk	C4a		160 0 0	160 0 0	
12 Clerk, (1 month at £140, 10 months at £150 in 1910-11)	C4a		136 13 4	160 0 0	
13 Clerk (£80 to 31 January, £95 from 1 February) ..	C4b		71 5 0	86 5 0	
14 Clerk (£65 to 31 May, £80 from 1 June)	C4b		52 0 0	66 5 0	
CONTINGENCIES.					
15 Stationery, Advertising, and Miscellaneous—including Travelling Expenses			2980 15 0	3167 10 0	
16 Fees for Inspection of Surveys			210 0 0	250 0 0	
17 { Printing			20 0 0	20 0 0	
{ Postal Charges, Telegrams, and Telephones ..			200 0 0	340 0 0	
			90 0 0		
			520 0 0	610 0 0	
<i>Total Lands' Titles Department</i>			3500 15 0	3777 10 0	
<i>Estimated Revenue for Services</i>			6000 0 0	5800 0 0	
XXX.—SHERIFF, &c.					
<i>Hobart.</i>					
SALARIES.					
1 Sheriff, Curator of Intestate Estates, Clerk of Supreme Court, Registrar of Supreme Court in Bankruptcy and Local Courts Act Jurisdiction, Deputy-Registrar of Deeds, and Collector of Stamp Duties; also Commissioner of Supreme Court, £10; Member of Mining Board, £25; and Deputy-Marshal, High Court	C1		425 0 0	425 0 0	460
2 Clerk	C3	5	232 10 0	240 0 0	
3 Sheriff's Officer, also Bailiff of Court of Requests and Collector for Office of Taxes, £5	C3	1	165 0 0	180 0 0	185
4 Courthouse Keeper and Crier of the Court	G2		180 0 0	180 0 0	
Crier of the Court, for 3 months, 1910-1911	G3		25 0 0	..	
<i>Carried forward</i>			1027 10 0	1025 0 0	

Appropriation, 1911-12.

ATTORNEY-GENERAL—continued.

	CLASSIFI- CATION.		1910-11.			1911-12.			Total Emoluments, including esti- mated value of allowances not received in cash.		
	Class.	Sub- division.	Fixed Establishment.			Fixed Establishment.			£ s. d.		
			£	s.	d.	£	s.	d.			
SHERIFF, &c.—continued.											
<i>Brought forward</i>			1027	10	0	1025	0	0			
<i>Launceston.</i>											
6 Deputy-Sheriff—also Registrar Court of Re- quests, &c., £175, and Commissioner Sup- reme Court, £25	2	3	100	0	0	100	0	0	300	0	0
7 Sheriff's Officer and Clerk, and Bailiff of Court of Requests	C4a		160	0	0	160	0	0			
8 Courthouse Keeper—also Crier of the Courts, with Quarters, Fuel, Light, and Uniform, say £33	G2		100	0	0	100	0	0	133	0	0
			360	0	0	360	0	0			
ALLOWANCES.											
9 Bailiff, Hobart, for Assistants ..			60	0	0	60	0	0			
10 Bailiff, Launceston, for Assistant ..			40	0	0	40	0	0			
			100	0	0	100	0	0			
CONTINGENCIES.											
11 {	Stationery, Incidental and Unforeseen Expenses (including purchase typewriting machine, 1910-11)		50	0	0	} 150	0	0			
	Travelling Expenses of Sheriff and Officers ..		10	0	0						
	Printing		35	0	0						
	Postal Charges, Telegrams, and Telephones ..		50	0	0						
	Assistance for Crier of Court.....		25	0	0						
				170	0	0	150	0	0		
<i>Total Sheriff's Department..</i>			1657	10	0	1635	0	0			
<i>Estimated Revenue for Services</i>			500	0	0	500	0	0			



Appropriation, 1911-12.

ATTORNEY-GENERAL—continued.

	CLASSIFICATION.		1910-11.			1911-12.			Total Emoluments, including estimated value of allowances not received in cash.
	Class.	Sub-division.	Fixed Establishment.			Fixed Establishment.			
			£	s.	d.	£	s.	d.	
XXXI.—COURTS OF REQUESTS AND COURT OF BANKRUPTCY, LAUNCESTON.									
SALARIES.									
1 Commissioner of Courts of Requests, and Police Magistrate, Launceston and North-Eastern Division; also Warden of Mines, £150	PA		400	0	0	400	0	0	550 0 0
2 Registrar of Courts of Requests and Bankruptcy, Registrar of Supreme Court in its Local Courts Act Jurisdiction, Clerk of the Peace, and Collector Stamp Duties; also Deputy-Sheriff, Launceston, £100, and Commissioner Supreme Court, £25	C2	3	155	0	0	175	0	0	300 0 0
-3 Office Cleaner			20	0	0	20	0	0	
			575	0	0	595	0	0	
CONTINGENCIES.									
4 Travelling Expenses of Commissioner			15	0	0	20	0	0	
5 { Stationery, Law Books, and Incidental Expenses			15	0	0	45	0	0	
{ Postal Charges, Telegrams, and Telephones			30	0	0				
{ Printing			5	0	0				
			65	0	0	65	0	0	
Total General Sessions, Court of Requests, and Court of Bankruptcy, Launceston			640	0	0	660	0	0	
TOTAL JUDICIAL DEPARTMENTS.			14,291	0	0	14,526	10	0	
Reserved by Law, Judicial Departments			£4350	0	0				
To be voted			10,176	10	0				
			£14,526	10	0				

Appropriation, 1911-12.

ATTORNEY-GENERAL—continued

	CLASSIFICATION.		1910-11.	1911-12.	Total Emoluments, including estimated value of allowances not received in cash.		
	Class.	Sub-division.	Fixed Establishment.				
			£	s. d.		£	s. d.
Magistracy and Courts of Requests.							
XXXII.—SOUTHERN DIVISION.							
SALARIES.							
1 Police Magistrate and Commissioner Court of Requests, Hobart, and Southern Division....	PA		450	0 0	450	0 0	
2 Bench Clerk and Clerk Petty Sessions; also Electoral Registrar, say £10	C3	5	232	10 0	240	0 0	250 0 7
3 Registrar Court of Requests	C3	4	225	0 0	225	0 0	
4 Information Clerk	C3	1	160	0 0	180	0 0	
			1067	10 0	1095	0 0	
CONTINGENCIES.							
5 Travelling Expenses, Police Magistrate and Commissioner, Police Clerk, &c.			40	0 0	30	0 0	
6 { Stationery, Stores, Fuel and Light, Cleaning, Sanitary Service, Miscellaneous			35	0 0	85	0 0	
			40	0 0			
			10	0 0			
Postal Charges, Telegraphs, and Telephones ..			125	0 0	115	0 0	
Printing			1192	10 0	1210	0 0	
<i>Total Southern Division.....</i>							

Appropriation, 1911-12.

ATTORNEY-GENERAL—*continued.*

	CLASSIFICATION.		1910-11.			1911-12.			Total Emoluments, including estimated value of allowances not received in cash.	
	Class.	Sub-division.	Fixed Establishment.			Fixed Establishment.				
			£	s.	d.	£	s.	d.		
MAGISTRACY, &c.—<i>continued.</i>										
XXXIII.—NORTHERN DIVISION.										
SALARIES.										
1										
Police Magistrate; also Commissioner Court of Requests, Launceston, Northern and North-Eastern Districts, £400, and Warden of Mines, £150										
2										
Bench Clerk and Commissioner Supreme Court, say £3										
	C3	3	240	0	0	240	0	0	243 0 0	
CONTINGENCIES.										
3			10	0	0	} 20 0 0				
Stationery, Stores, Fuel and Light, and Miscellaneous										
Postal Charges and Telegrams										
			5	0	0					
Printing										
			15	0	0	20	0	0		
<i>Total Northern Division</i>										
			255	0	0	260	0	0		
XXXIV.—NORTH-WESTERN DIVISION.										
SALARIES.										
1										
Police Magistrate, and Commissioner of Court of Requests, North-Western Division, Collector of Stamp Duties and Coroner; also Assistant Returning Officer, say £5										
	PA		400	0	0	400	0	0	405 0 0	
CONTINGENCIES.										
2			60	0	0	60	0	0		
Travelling Expenses, Police Magistrate and Commissioner										
3			75	0	0	} 85 0 0				
Stationery and Stores, Fuel and Light, Cleansing, Rents, Water Rates, and Miscellaneous										
Postal Charges, Telegrams, and Telephone										
			15	0	0					
Printing										
			5	0	0					
<i>Total District of East Devon</i>										
			155	0	0	145	0	0		
			555	0	0	545	0	0		

Appropriation, 1911-12.

ATTORNEY-GENERAL—continued.

	CLASSIFICATION.		1910-11.			1911-12.			Total Emoluments, including estimated value of allowances not received in cash. £
	Class.	Sub-division.	Fixed Establishment.			Fixed Establishment.			
			£	s.	d.	£	s.	d.	
XXXVII.—POLICE DEPARTMENT.									
SALARIES.									
1 Commissioner of Police	C1		450	0	0	450	0	0	
2 Chief Clerk and Accountant; also Secretary Provident Fund	C2	1	260	0	0	250	0	0	
3 Clerk	C4a		150	0	0	160	0	0	
4 Clerk (from 1st October, say at £130 in 1910-11)	C4a		100	0	0	140	0	0	
5 Clerk	C4a		95	0	0	110	0	0	
			1055	0	0	1120	0	0	
6 Superintendents, Inspectors, Sub-Inspectors, Sergeants, Constables, Special Constables, Medical Officer, and Female Searcher and Office Cleaner			31,109	11	8	31,880	5	6	
ALLOWANCES.									
7 Horse and Bicycle Allowances			2400	0	0	2400	0	0	
8 Personal Allowances for special work			240	0	0	250	0	0	
9 House Allowances in lieu of Quarters						800	0	0	
			2640	0	0	3450	0	0	
CONTINGENCIES.									
10 Stationery and Stores, including Provisions, Bedding, Utensils, &c., for prisoners			240	0	0	240	0	0	
11 Uniforms and Equipment			1350	0	0	1350	0	0	
12 Travelling Expenses, Expenses of Inspection, and Conveyance of Police on Railways, Tramways, and Ferry (Mersey)			1700	0	0	1700	0	0	
13 Construction and Repair of Buildings, Furniture, and Rents			670	0	0	670	0	0	
14 Miscellaneous Expenses, (Printing; Postal Charges, Telegrams, and Telephones; Fuel and Light; Purchase, &c., Boats, Acts, News papers and Books; Drill Instructors; Sanitary and Water Service, &c.)			1225	0	0	1125	0	0	
15 Contribution to Reward Branch of the Police Provident Fund			500	0	0	500	0	0	
16 Infant Life Protection, including Medicine, Maintenance, &c.			300	0	0	300	0	0	
17 Expenses in connection with Samples of Liquor for Analysis			50	0	0	50	0	0	
			6035	0	0	5935	0	0	
<i>Total Police Department</i>			40,839	11	8	42,385	5	6	
<i>Estimated Revenue for Rental of Government Quarters, and fees on Collections, &c.</i>			1800	0	0				

Appropriation, 1911-12.

ATTORNEY-GENERAL—continued.

	CLASSIFI- CATION.		1910-11.			1911-12.			Total Emoluments, including esti- mated value of allowances not received in cash.		
	Class.	Sub- division.	Fixed Establishment.			Fixed Establishment.					
			£	s.	d.	£	s.	d.	£	s.	d.
Gaols.											
XXXVIII.—GAOL, HOBART.											
SALARIES.											
1 Sheriff	See XXXV.			See XXX.					
2 Superintendent (Quarters, Fuel, Light, &c., £80)	C2	6	240	0	0	260	0	0	340	0	0
3 Deputy-Superintendent (Quarters, Fuel, Light, and Uniform, £42)	G1		172	0	0	178	0	0	220	0	0
4 Clerk	C4a		162	0	0	162	0	0			
5 Clerk, £40 for 2 months, £50 for 10 months ..	C4b		57	10	0	48	6	8			
6 Overseer of Mechanics, with Uniform, £2....	G2		133	0	0	140	0	0	142	0	0
7 Overseer of Shoemakers, with Uniform, £2....	G2		133	0	0	140	0	0	142	0	0
8 Chief Warder (Quarters, Fuel, Light, and Uni- form, £32)	G2		122	0	0	127	15	0	159	15	0
9 Eight Warders (1st Class), at £127 15s., Uniform £2 each	G2		976	0	0	1022	0	0	1038	0	0
10 Four Warders (2nd Class), at £118 12s. 6d., Uniform £2 each	G3		432	0	0	474	10	0	450	10	0
11 Five Warders (3rd Class), at £109 10s., Uniform £2 each	G3		480	0	0	547	10	0	557	10	0
12 Two Female Warders—One at £62, and one at £52 (Quarters, Fuel, and Light, £15 each)	G4		114	0	0	114	0	0	144	0	0
13 Medical Officer			25	0	0	25	0	0			
CONTINGENCIES.			3046 10 0			3239 1 8					
14 Clothing, Bedding, Stores, and Stationery, Uniforms, Provisions, Medical Comforts, Fuel and Light, Miscellaneous			1500	0	0	1450	0	0			
15 { Postal Charges, Telegrams, and Telephones ..			18	0	0	23	0	0			
{ Printing			5	0	0						
16 Repairs and Alterations			200	0	0	40	0	0			
			1723	0	0	1513	0	0			
<i>Total Gaol, &c., Hobart</i>			4769	10	0	4752	1	8			
<i>Estimated Revenue for Services</i>			750	0	0	250	0	0			

Appropriation, 1911-12.

ATTORNEY-GENERAL--continued.

	CLASSIFICATION.		910-11.			1911-12.			Total Emoluments, including estimated value of allowances not received in cash. £
	Class.	Sub-division.	Fixed Establishment.			Fixed Establishment.			
			£	s.	d.	£	s.	d.	
Education.									
XLI.— EDUCATION DEPARTMENT.									
SALARIES.									
1 Director of Education	PA		600	0	0	600	0	0	235
2 Secretary	C2	6	450	0	0	450	0	0	
3 Chief Clerk and Accountant	C2		260	0	0	260	0	0	
4 Clerk ; also Secretary Scholarship Board, £10	C3	5	210	0	0	225	0	0	
5 Clerk (for 1 month in 1911-12)	C4a		160	0	0	13	6	8	
6 Clerk	C4a		140	0	0	150	0	0	
7 Clerk	C4b		80	0	0	95	0	0	
8 Clerk	C4b		65	0	0	80	0	0	
9 Clerk	C4b		47	10	0	61	5	0	
10 Clerk	C4b.		41	0	0	55	0	0	
11 Clerk						40	16	8	
12 Truant Officer, Hobart	G2		150	0	0	150	0	0	
13 Truant Officer, Launceston	G1		100	0	0	110	0	0	
Truant Officer, Queenstown, for six months, 1910			15	0	0	..			
			2318	10	0	2290	8	4	
14 Board of Examiners			50	0	0	50	0	0	
15 Salaries of Inspectors of Schools, 5 at £400 each			2000	0	0	2000	0	0	
16 Salaries, Principal, Training College, and 3 Assistants			860	0	0	885	0	0	
17 Salaries and Travelling Allowances, Medical Inspectors and 2 Nurses			720	0	0	720	0	0	
18 Salaries and Allowances to Teachers (including Allowances to Students in Training). Teachers in State Schools and Provisional Schools to be paid in accordance with the scales of staffing and salaries in the Regulations under the Education Act of 1885, and in no case shall the Teacher be paid salary exceeding the maximum in his or her class			62,561	0	0	65,000	0	0	
19 Rents, Transfer Allowances, School Furniture and Fittings, and School Books and Requisites			1800	0	0	2250	0	0	
20 Miscellaneous			460	0	0	460	0	0	
21 Repairs and Improvements to State Schools			4000	0	0	4000	0	0	
			72,451	0	0	75,365	0	0	
<i>Carried forward</i>			74,769	10	0	77,655	8	4	

Appropriation, 1911-12.

ATTORNEY-GENERAL—continued.

	CLASSIFICATION.		1910-11.			1911-12.			Total Emoluments, including estimated value of allowances not received in cash.																
	Class.	Sub-division.	Fixed Establishment.			Fixed Establishment.																			
			£	s.	d.	£	s.	d.	£																
EDUCATION DEPARTMENT—continued.																									
<i>Brought forward</i>																									
CONTINGENCIES.																									
22			450	0	0	450	0	0																	
23			50	0	0	50	0	0																	
24			3700	0	0	4150	0	0																	
25			70	0	0	70	0	0																	
26			1200	0	0	1000	0	0																	
27			350	0	0	350	0	0																	
28																									
29			350	0	0	400	0	0																	
30			450	0	0	300	0	0																	
31			150	0	0	100	0	0																	
			300	0	0	580	0	0																	
			7070	0	0	7450	0	0																	
			81,839	10	0	85,105	8	4																	
<i>Total Primary Education</i>																									
TECHNICAL EDUCATION.																									
For purposes of Technical Education (and fees paid by Students): Accounts to be paid by the Treasury on the certificate of the Chairman of the Committee of the School, or the member appointed in his stead.																									
32			850	0	0	850	0	0																	
33			850	0	0	850	0	0																	
34			275	0	0	275	0	0																	
35			50	0	0	50	0	0																	
36			700	0	0	700	0	0																	
			2725	0	0	2725	0	0																	
			84,564	10	0	87,830	8	4																	
<i>Total Education Department</i>																									
<i>Estimated Revenue</i>																									
XLII.—TASMANIAN UNIVERSITY.																									
1			*4500	0	0	*4500	0	0																	
			4500	0	0	4500	0	0																	
			89,064	10	0	92,330	8	4																	
TOTAL EDUCATION																									
<table style="width: 100%; border-collapse: collapse;"> <tr> <td style="width: 80%;"></td> <td style="text-align: right;">£</td> <td style="text-align: right;">s.</td> <td style="text-align: right;">d.</td> </tr> <tr> <td>*Reserved by Law</td> <td style="text-align: right;">4000</td> <td style="text-align: right;">0</td> <td style="text-align: right;">0</td> </tr> <tr> <td>To be voted</td> <td style="text-align: right;">88,330</td> <td style="text-align: right;">8</td> <td style="text-align: right;">4</td> </tr> <tr> <td></td> <td style="text-align: right; border-top: 1px solid black;">£92,330</td> <td style="text-align: right; border-top: 1px solid black;">8</td> <td style="text-align: right; border-top: 1px solid black;">4</td> </tr> </table>											£	s.	d.	*Reserved by Law	4000	0	0	To be voted	88,330	8	4		£92,330	8	4
	£	s.	d.																						
*Reserved by Law	4000	0	0																						
To be voted	88,330	8	4																						
	£92,330	8	4																						

Appropriation, 1911-12.

ATTORNEY-GENERAL—continued.

	CLASSIFICATION.		1910-11.			1911-12.			Total Emoluments, including estimated value of allowances not received in cash.
	Class.	Sub-division.	Fixed Establishment.			Fixed Establishment.			
			£	s.	d.	£	s.	d.	£
XLIII.—DEPARTMENT OF MINES.									
HOBART.									
1 Secretary for Mines; also Chairman Mt. Cameron Water-race Board, £25	C1		450	0	0	450	0	0	475
2 Chief Clerk	C2	4	320	0	0	320	0	0	
3 Clerk, Cashier, and Accountant	C2	1	260	0	0	260	0	0	
4 Registrar of Mines; also Chairman of Board of Examiners, Merchant Ships Officers' Examination Act, £50	C3	4	225	0	0	225	0	0	275
5 Engrossing Clerk	C3	2	195	0	0	195	0	0	
6 Clerk	C4a		160	0	0	160	0	0	
7 Clerk	C4a		150	0	0	160	0	0	
3 Clerk; also Secretary to Mining Board, £10 ..	C4a		120	0	0	130	0	0	140
			1880	0	0	1900	0	0	
LAUNCESTON.									
9 Warden of Mines, Launceston, North and North-Eastern Division; also Commissioner Courts of Requests, Launceston, &c., £400, and Police Magistrate, &c., North-Eastern Division			150	0	0	150	0	0	550
Registrar of Mines; also Clerk in charge Lands, £110; and Registrar of Births, £20	C3	5	110	0	0	
10 Registrar of Mines, also Registrar of Births, £20 Clerk and Draftsman; also Lands, £120	C3	3	180	0	0	200
11 Clerk; also Clerk Lands Office, £65	PC	4	120	0	0	
	C4a		150	0	0	65	0	0	130
			530	0	0	995	0	0	
NORTH-EASTERN MINING DIVISION.									
12 Registrar, Moorina	C4b		80	0	0	80	0	0	
Registrar, Gladstone; also Postmistress, &c., £120			40	0	0	
			120	0	0	80	0	0	
EASTERN MINING DIVISION.									
13 Registrar and Clerk			50	0	0	50	0	0	
NORTH-WESTERN MINING DIVISION.									
14 Registrar of Mines, Waratah; also Constable, £96			15	0	0	15	0	0	111
Registrar of Mines, Mt. Balfour			50	0	0	
			65	0	0	15	0	0	
WESTERN MINING DIVISION.									
15 Warden of Mines; also Police Magistrate, £300			100	0	0	100	0	0	400
16 Registrar, Zeehan			120	0	0	120	0	0	
			220	0	0	220	0	0	
<i>Carried forward</i>			2865	0	0	2660	0	0	

Appropriation, 1911-12.

ATTORNEY-GENERAL—continued.

	CLASSIFICATION.		1910-11.			1911-12.			Total Emoluments, including estimated value of allowances not received in cash.
	Class.	Sub-division.	Fixed Establishment.			Fixed Establishment.			
			£	s.	d.	£	s.	d.	£
DEPARTMENT OF MINES—continued.									
<i>Brought forward</i>			2865	0	0	2660	0	0	
<i>Government Geologist and Inspectors of Mines.</i>									
17 Government Geologist & Chief Inspector of Mines	PA		500	0	0	500	0	0	
18 Assistant Geologist and Inspector of Mines	PB	4	325	0	0	350	0	0	
19 Clerk and Draftsman	PC	2	200	0	0	200	0	0	
20 Inspector of Mines, Launceston; also of Works, N.E. Division	PB	3	350	0	0	350	0	0	
21 Inspector of Mines, Zeehan	PB	2	325	0	0	325	0	0	
22 Inspector of Mines, Queenstown.....	PB	1	285	0	0	285	0	0	
			1985	0	0	2010	0	0	
<i>Total Salaries</i>			4850	0	0	4670	0	0	
ALLOWANCES.									
23 Forage Allowance—Inspector, Zeehan			25	0	0	25	0	0	
CONTINGENCIES, MINES.									
24 Travelling Expenses (including Wages of Field Assistants to Geologists, &c.).....			450	0	0	450	0	0	
25 Miscellaneous Expenses, Stationery, &c., and Law Expenses			120	0	0	120	0	0	
26 Printing			300	0	0	400	0	0	
27 Postal Charges, Telegraphs, and Telephones ..			210	0	0	210	0	0	
28 Geological Instruments, Books, &c.			50	0	0	50	0	0	
29 Establishing Dépôts for Prospectors' Food Supplies; also Assisting Prospectors in further developing their discoveries			200	0	0	1000	0	0	
30 Expenses in connection with use of Diamond Drill in testing Lodes on £1 for £1 principle			..			1000	0	0	
31 Investigating and obtaining Reports upon the Water Supply of the West Coast for Mining purposes.....			..			300	0	0	
			1330	0	0	3530	0	0	
MINING BOARD.									
32 Remuneration to Members			100	0	0	100	0	0	
33 Salary of Secretary; also Clerk Mines, £130 ..			10	0	0	10	0	0	
			110	0	0	110	0	0	
<i>Total Department of Mines</i>			6315	0	0	8335	0	0	

Appropriation, 1911-12.

Minister of Lands and Works.

Lands, Works, Mines, Agricultural, and Railway Departments.	CLASSIFI- CATION.		1910-11.		1911-12.		Total Emoluments, including esti- mated value of allowances not received in cash.
	Class.	Sub- division.	Fixed Establishment.		Fixed Establishment.		
			£	s. d.	£	s. d.	£
XLIV.—DEPARTMENT OF LANDS AND SURVEYS.							
SALARIES.							
1 Surveyor-General and Secretary for Lands, also Trustee Agricultural Bank, £26	PA		550	0 0	550	0 0	576
CLERICAL STAFF.							
Chief Clerk	C2	5	330	0 0	340	0 0	
3 Clerk and Accountant; also Returning Officer, £16	C2	1	260	0 0	260	0 0	276
4 Clerk	C2	2	260	0 0	280	0 0	
5 Clerk	C3	5	240	0 0	240	0 0	
6 Clerk	C3	1	180	0 0	180	0 0	
7 Clerk	C3	4	225	0 0	225	0 0	
8 Clerk	C3	1	180	0 0	180	0 0	
9 Clerk; also Secretary to Minister	C3	1	195	0 0	160	0 0	
10 Clerk and Secretary to Trustees Agricultural Bank	C1a		140	0 0	110	0 0	
11 Clerk, £65 to 31 Dec., £80 from 1 January ..	C4b		95	0 0	72	10 0	
12 Clerk, £40 to 31 Dec., £50 from 1 January ..	C4b		57	10 0	45	0 0	
Clerk in Charge, Launceston; also Registrar of Mines, £110, and Registrar of Births, £20	C3	5	110	0 0	..		
13 Clerk; also Clerk Mines, £65	C4a		30	0 0	65	0 0	
14 Chief Forest Officer	C2	1	260	0 0	260	0 0	
15 Chief Inspector of Timber		240	0 0	
Crown Lands Bailiff, West Coast	G3		104	0 0	..		
16 Crown Lands Bailiffs		120	0 0	
PROFESSIONAL STAFF.							
17 Chief Draftsman	PB	5	385	0 0	385	0 0	
18 Draftsman in Charge	PB	2	260	0 0	285	0 0	
19 Draftsman (Computing); also Secretary Board of Examiners, £10	PB	3	310	0 0	335	0 0	345
20 Draftsman	PC	4	220	0 0	240	0 0	
21 Draftsman	PC	4	220	0 0	240	0 0	
22 Draftsman	PC	1	180	0 0	180	0 0	
23 Draftsman	PC	2	190	0 0	200	0 0	
24 Draftsman	PD		120	0 0	140	0 0	
25 Draftsman	PD		80	0 0	100	0 0	
26 Draftsman	PD		80	0 0	100	0 0	
Clerk and Draftsman, Launceston; also Mines, £120	PC	4	120	0 0	..		
27 Draftsman	PD		..		80	0 0	
MINING.							
28 Chief Draftsman	PB	2	310	0 0	310	0 0	
29 Draftsman also Officer in charge, Launceston ..	PC	5	..		260	0 0	
30 Draftsman	PC	4	220	0 0	240	0 0	
31 Draftsman	PC	3	200	0 0	220	0 0	
32 Draftsman	DD		40	0 0	60	0 0	
Carried forward			6151	10 0	6642	10 0	

Appropriation, 1911-12.

MINISTER OF LANDS AND WORKS—continued.

	CLASSIFI- CATION.		1910-11.			1911-12.			Total Emoluments, including esti- mated value of allowances not received in cash. £
	Class.	Sub- division.	Fixed Establishment.			Fixed Establishment.			
			£	s.	d.	£	s.	d.	
DEPARTMENT OF LANDS AND SURVEYS—continued.									
<i>Brought forward</i>									
CONTINGENCIES.									
33 Travelling Expenses Surveyor-General, Forest Officer, and Inspector of Timber			75	0	0	75	0	0	
34 Incidental Expenses, Crown Bailiffs, &c.; Commission for selling Public Lands; Collecting Residence, &c., Licences; Inspection of Timber; Miscellaneous Expenses; Stationery, Stores, and Advertising			800	0	0	800	0	0	
35 Printing			700	0	0	700	0	0	
36 Expenses in connection with Examination of Surveyors			15	0	0	15	0	0	
37 Postal Charges, Telegrams, and Telephones....			300	0	0	250	0	0	
			1890	0	0	1840	0	0	
<i>Total Department of Lands and Surveys</i> ..			8041	10	0	8482	10	0	
<i>Estimated Revenue earned for Services</i>			5500	0	0	6000	0	0	

Appropriation, 1911-12.

MINISTER OF LANDS AND WORKS—continued.

	CLASSIFICATION.		1910-11.				1911-12.			
	Class.	Sub-division.	Fixed Establishment.		Special Staff charged to Loans.		Fixed Establishment.		Special Staff charged to Loans.	
			£	s. d.	£	s. d.	£	s. d.	£	s. d.
XLV.—DEPARTMENT OF PUBLIC WORKS.										
CLERICAL STAFF.										
1 Secretary for Public Works	C1		360	0 0			375	0 0		
2 Chief Clerk and Accountant	C2	5	330	0 0			340	0 0		
3 Cashier and Account Clerk	C3	3	170	0 0			185	0 0		
4 Clerk	C3	3	170	0 0			185	0 0		
5 Clerk	C4a		140	0 0			140	0 0		
6 Clerk	C4b		110	0 0			120	0 0		
7 Clerk, £95 to 31 Jan., £110 from 1 Feb.	C4b		86	5 0			101	5 0		
8 Clerk	C3	4	90	0 0	140	0 0	90	0 0	140	0 0
9 Clerk	C4b		95	0 0			110	0 0		
<i>Clerk</i>	C4b				95	0 0			95	0 0
<i>Clerk</i> , 1 month at 65, 9 months at £80	C4b				50	0 0			65	8 4
PROFESSIONAL STAFF.										
10 Engineer-in-Chief	PA		200	0 0	310	0 0	250	0 0	550	0 0
11 Engineer and Surveyor of Roads and Railways..	PB				500	0 0			500	0 0
12 Chief Draftsman and Assistant Engineer	PB	4	50	0 0	235	0 0	50	0 0	260	0 0
<i>Draftsman</i>	PC	1			200	0 0			200	0 0
<i>Draftsman</i>	PC	2			220	0 0			220	0 0
<i>Junior Draftsman</i>	PD	3			60	0 0			80	0 0
<i>Clerk</i>	C4a				160	0 0			160	0 0
13 Clerk	C4a		20	0 0	110	0 0	20	0 0	120	0 0
14 Inspector of Roads, North	G1		50	0 0	300	0 0	50	0 0	300	0 0
<i>Road Surveyor and Assistant Inspector of Roads, North</i>									260	0 0
<i>Inspector of Roads, South</i>	G1				240	0 0			250	0 0
<i>Sub-Inspector of Roads, North</i>	G2				190	0 0			190	0 0
<i>Sub-Inspector of Roads, N. E. District</i>	G1				220	0 0			230	0 0
<i>Sub-Inspector of Roads, South</i>	G2				190	0 0			190	0 0
<i>Sub-Inspector of Roads, South</i>	G2				180	0 0			180	0 0
<i>Sub-Inspector of Roads, North-West Coast</i> ..	G2				180	0 0			190	0 0
<i>Sub-inspector of Roads, South</i>									170	0 0
<i>Clerk and Draftsman, North</i>	PD				150	0 0			160	0 0
15 Inspector of Public Buildings	PB	5	50	0 0	310	0 0	50	0 0	310	0 0
<i>Architectural Draftsman</i>	PC	2			220	0 0			200	0 0
<i>Architectural Draftsman</i>	PC	3			210	0 0			220	0 0
<i>Clerk of Works, South</i>	G1				220	0 0			230	0 0
<i>Clerk of Works, North</i>	G2				180	0 0			190	0 0
<i>Draftsman</i>	PD	6			150	0 0				
<i>Clerk of Works</i>	G2								180	0 0
			1921	5 0	5020	0 0	2066	5 0	5840	8 4
CONTINGENCIES.										
16 Stationery, Stores, Incidental Expenses, including Stamps on Receipts for deposits, and Advertising			100	0 0			100	0 0		
17 Printing			200	0 0			200	0 0		
18 Postal Charges, Telegrams, Telephones			325	0 0			300	0 0		
			625	0 0			600	0 0		
<i>Total Department of Public Works</i>			2546	5 0	5020	0 0	2666	5 0	5840	8 4

Appropriation, 1911-12.

MINISTER OF LANDS AND WORKS—*continued.*

XLVI.—AGRICULTURAL AND STOCK DEPARTMENT.	CLASSIFICATION.		1910-11.	1911-12.	Total Emoluments, including estimated value of allowances not received in cash.
	Class.	Sub-division.	Fixed Establishment.	Fixed Establishment.	
PROFESSIONAL STAFF.					
			£ s. d.	£ s. d.	£ s. d.
1 Director of Agriculture.....	PA		500 0 0	500 0 0	
2 Chief Inspector of Stock	PA		400 0 0	400 0 0	
3 Dairy Expert.....			270 0 0	270 0 0	
4 Pathologist and Entomologist			250 0 0	250 0 0	
5 Poultry Expert			250 0 0	250 0 0	
6 Agricultural Expert and Chemist			240 0 0	240 0 0	
7 Fruit and Forestry Expert			230 0 0	240 0 0	
8 Inspector of Stock, Launceston			140 0 0	150 0 0	
9 Inspector of Stock, Hobart			35 0 0	35 0 0	
10 Inspector of Stock, Launceston.....			30 0 0	30 0 0	
11 Inspector of Stock, Hobart			20 0 0	15 0 0	
12 Inspector of Stock (Strahan, 1910-11), Queenstown			5 0 0	5 0 0	
13 Senior Inspector Transferred Products (Inwards and Outwards), also State Supervising Officer Commerce Act, £100; and Senior Inspector Vegetable Products, £50			150 0 0	150 0 0	300 0 0
14 Inspector of Stock, Devonport, also from Contingencies, £22 10s., and from Potato Diseases Fund, £150			20 0 0	20 0 0	192 10 0
CLERICAL STAFF.					
15 Editor "Agricultural Gazette" and Secretary Immigration Board			260 0 0	260 0 0	
16 Chief Clerk, also Quarantine Officer, £35.....	C2	1	225 0 0	240 0 0	275 0 0
17 Clerk	C4a		110 0 0	120 0 0	
18 Ditto, £140 from 1st August	128 6 8	
19 Ditto, £80, from 1st August	73 6 8	
GENERAL STAFF.					
20 Caretaker, Nubeena, with Quarters, say £15 ..			86 0 0	86 0 0	101 0 0
21 Caretaker, Middle Island, with allowance for Fuel and Light, £7 10s.; and Quarters, say £15; also fees for caretaking imported Stock			70 0 0	70 0 0	92 10 0
			3291 0 0	3532 13 4	
ALLOWANCES.					
22 Caretaker, Middle Island, Fuel and Light			7 10 0	7 10 0	
23 Inspector, Launceston, for Horse and Trap....			26 0 0	26 0 0	
			33 10 0	33 10 0	
CONTINGENCIES.					
24 Classes for Instruction; Farmers' Experiments; Chemical Laboratory, and assistance of Agricultural Chemist; Destruction of Rabbits and Californian Thistles on Crown Lands; Expenses for Inspection of Transferred Stock and Vegetable Products; Botanist; Travelling Expenses and Railway Fares, Stationery, Advertising, Clerical Assistance, and Miscellaneous.....			2600 0 0	1900 0 0	
25 Printing, including "Agricultural Gazette"	700 0 0	
Eradication San José Scale			100 0 0	..	
26 Nursery for Afforestation			200 0 0	200 0 0	
27 Postal Charges, Telegrams, and Telephone			160 0 0	160 0 0	
Agistment of Dairy Cattle while in Quarantine..			150 0 0	..	
28 Expenses in connection with New Quarantine Stations.....			..	150 0 0	
			3210 0 0	3110 0 0	
			6534 10 0	6676 3 4	
<i>Total Agricultural and Stock Department..</i>			<u>900 0 0</u>	<u>1020 0 0</u>	
<i>Estimated Revenue for Services</i>					

Appropriation, 1911-12.

MINISTER OF LANDS AND WORKS—continued.

	CLASSIFICATION.		1910-11.	1911-12.	Total ^a Emoluments, including esti- mated value of allowances not received in cash.
	Class.	Sub- division.	Fixed Establishment.	Fixed Establishment.	
XLVIII.—ROADS, BRIDGES, SURVEYS, TRACKS, BUILDINGS, FERRIES, &c.					
1 Reserve for Expenditure in connection with Residence Areas and Mining Settlement....			£ s. d. 400 0 0*	£ s. d. 400 0 0*	
2 Surveys of Lands for Sale, for Lease, or for Public Purposes			12,000 0 0	10,000 0 0	
3 Aid to Road Rates			16,000 0 0	14,000 0 0	
4 Bridges, and Jetties generally			2500 0 0	2500 0 0	
5 Repairs to Tracks generally			200 0 0	200 0 0	
6 Repairs, Alterations, and Miscellaneous Expenses in connection with Public Buildings, including Country Buildings			600 0 0	1000 0 0	
7 Furniture and General Repairs, Parliamentary Buildings			125 0 0	100 0 0	
8 Furniture, Public Offices generally			250 0 0	200 0 0	
9 Repairs to Roads and Fences, and improving and maintaining Franklin-square, Queen's Domain, Barracks Reserve, Hobart, and Parliament House Reserve			340 0 0	340 0 0	
10 Rates on Government Property			200 0 0	200 0 0	
11 Aid to Ferry, Hobart to Bellerive.....			300 0 0	300 0 0	
12 Ditto, Risdon.....			100 0 0	100 0 0	
13 Ditto Ferries, Arthur and Pieman Rivers ..			75 0 0	75 0 0	
14 Ditto, Austin's Ferry			15 0 0	15 0 0	
15 Maintenance Denison Canal			200 0 0	200 0 0	
16 In aid of Surveys of Roads, &c.			500 0 0	500 0 0	
17 Repairs, Bridgewater Pridge—Special	1000 0 0	
18 New Town Infirmary—Renewal of Spouting, &c.			..	380 0 0	
19 General Hospital, Hobart—Renovation of Nurses' Home	130 0 0	
20 Devon Hospital—Renovation	150 0 0	
21 Blind Asylum, Hobart—Addition to Kitchen .			..	30 0 0	
22 Tasmanian Museum and Art Gallery—Renova- tion and Improvements.....			..	100 0 0	
Launceston General Hospital—Repairs			200 0 0	..	
Hobart General Hospital—Repairs			200 0 0	..	
Repairs and Alterations, Public Buildings, Launceston			400 0 0	..	
To make good to Survey Advance Account balances of Survey Fees due by Selectors who have defaulted in their Payments			305 0 0	..	
TOTAL ROADS, BRIDGES, SURVEYS, &c			34,910 0 0	31,920 0 0	
<i>Estimated Revenue for Survey Fees</i>			<i>11,000 0 0</i>	<i>11,000 0 0</i>	
*Reserved by Law			£400		
To be voted			31,520		
			£31,920		
XLIX.—MISCELLANEOUS.					
1 Inspection of Private Railways.....			25 0 0	25 0 0	
2 Investigating and obtaining Reports upon the Water Supply of Tasmania for power and irrigation purposes			500 0 0	350 0 0	
<i>Total Miscellaneous</i>			<i>525 0 0</i>	<i>375 0 0</i>	

Appropriation, 1911-12.

MISCELLANEOUS—GENERAL—continued.

	CLASSIFICATION.		1910-11.		1911-12.		Total Emoluments, including estimated value of allowances not received in cash.
	Class.	Sub-division.	Fixed Establishment.		Fixed Establishment.		
			£	s. d.	£	s. d.	£
MISCELLANEOUS—GENERAL—continued.							
<i>Brought forward</i>			4740	0 0	10,785	0 0	
14 To secure steamship service between Launceston and Furneaux Islands			175	0 0	200	0 0	
15 Kindergarten Schools, Hobart and Launceston, on £ for £ system			200	0 0	200	0 0	
16 Reprinting and Consolidating Tasmanian Statutes, from 1901 to 1909 inclusive			100	0 0	75	0 0	
17 Contribution to Queen's Domain Committee, an amount equivalent to Fees received, but not to exceed			50	0 0	50	0 0	
18 Instalment towards clearing off amount standing to debit of Military Stores Suspense Account		1000	0 0	
19 Contribution to Public Service Superannuation Fund for actuarial expenses		100	0 0	
20 To provide Garden Tools and Seeds for State School, Cape Barren Island		50	0 0	
21 To replenish Stores at West Coast Relief Depôts		60	0 0	
22 To refund to Tasmania Gold Mine, Limited, Stamp Duty on Conveyance from Old Company to New Company upon re-construction		36	10 0	
23 To refund Probate Duty overpaid by Trustees of Estate of C. G. H. Lloyd		25	10 0	
24 To enable assistance to be given to residents in Tasmania towards payment of Passage Money of their relatives or friends desiring to settle in Tasmania		500	0 0	
Contribution towards meeting Expenses of visit of Scottish Farmers			250	0 0	..		
Payment to Sir John Dodds on account of his Costs in connection with the Royal Commission on the Scottsdale-Branxholm Railway Extension			188	11 7	..		
Legal Costs incurred by Officers of Lands Department in connection with Select Committee's enquiry			33	0 6	..		
Maintenance of Mt. Nelson Road			75	0 0	..		
Salary of Manager of Cape Barren Island Reserve (for the first Six months of 1911) ..			150	0 0	..		
Expenses of Manager ditto			75	0 0	..		
To provide for balance of Legal Expenses in connection with the case of the V.D.L. Co. v. the Marine Board of Table Cape			526	19 2	..		
To refund Hutton & Co. Proprietary amount of Income Tax paid in respect of the year 1908 ..			50	0 0	..		
To reimburse Mr. M. T. Cheek, State School Teacher, for loss of Salary from 1 September, 1909, to 31 March, 1910			81	13 4	..		
To provide for payment of 35 per cent. rebate on Railway freights, Tasmanian Smelting Company. (Final payment to 21 August, 1911)			42	19 6	..		
To pay Mr. H. E. Packer difference between £375 per annum and the salary of £250 provided under head of Legislative Council			125	0 0	..		
<i>Total Miscellaneous</i>			6863	4 1	13,082	0 0	

Appropriation, 1911-12.

Pensions, Interest, and Sinking Funds.

	CLASSIFICATION.		1910-11.	1911-12.	Total Emoluments, including estimated value of allowances not received in cash.
	Class.	Sub-division.	Fixed Establishment.	Fixed Establishment.	
			£ s. d.	£ s. d.	£ s. d.
LI.—Pensions, Retired Allowances, &c.					
<i>For the purposes of The Public Debts Sinking Funds Act.</i>					
56 Vict. No. 24					
58 Vict. No. 23					
59 Vict. No. 40					
60 Vict. No. 25					
61 Vict. No. 12					
3 Edw. 7 No. 29					
J. Hurford, late Caretaker Government House..			78 9 9	78 9 9	
W. R. Cooke, late Compositor, Printing Department			120 0 0	120 0 0	
F. W. Abbott, late Draftsman, Lands and Surveys Department.....			146 13 4	146 13 4	
B. Shaw, late Police Magistrate, Hobart, to 5 September, 1910			27 1 8	..	
Geo. Browne, late Judges' Associate, and Curator Intestate Estates (additional)			166 13 4	166 13 4*	
G. Richardson, late Commissioner of Police ..			366 13 4	366 13 4†	
F. Martini, late Inspector of Explosives			60 0 0	60 0 0*	
P. Finnigan, late Sub-Inspector of Police			26 0 0	26 0 0*	
C. Wright, late Superintendent of Police.....			26 0 0	26 0 0	
A. Colhoun, late Sub-Inspector of Police.....			138 17 1	138 17 1	
			<u>13,103 8 6</u>	<u>13,076 6 10</u>	
Reserved by Law			£12,199 13 4*		
To be voted			876 13 6		
Total Pensions			<u>£13,076 6 10</u>		
† £350 only paid whilst holding office of Chairman Public Service Board.					

Appropriation, 1911-12.

PENSIONS, INTEREST, AND SINKING FUNDS—*continued.*

	Rate per cent.	1910-11.			1911-12.		
		£	s.	d.	£	s.	d.
LII.—Interest.							
On Debentures issued under Act 44 Vict.							
No. 34.....	4	12,000	0	0	12,000	0	0
Ditto 46 Vict. No. 45	3½ & 4	21,863	0	0	21,863	0	0
Ditto 47 Vict. No. 47	4	32,000	0	0	32,000	0	0
Ditto 49 Vict. No. 54	4	40,000	0	0	20,000	0	0
Ditto 56 Vict. No. 53	4	2704	0	0	2704	0	0
On Inscribed Stock for purposes of Act 52							
Vict. No. 68	3½	35,000	0	0	35,000	0	0
Ditto ditto Main Line Railway Purchase Act, 54 Vict. No. 1.....	3½	38,728	0	0	38,728	0	0
Ditto 55 Vict. No. 82	3½	21,000	0	0	21,000	0	0
Ditto, 55 Vict. No. 82 & 56 Vict. No. 56	4	40,000	0	0	40,000	0	0
Ditto 58 Vict. No. 40	3½	26,250	0	0	26,250	0	0
Ditto 64 Vict. No. 14	3	13,500	0	0	13,500	0	0
Ditto 3 Edw. VII. No. 26 and 4 Edw. 7							
No. 29	3½	7000	0	0	7000	0	0
Ditto 7 Edw. VII. No. 16	3½	7000	0	0	7000	0	0
Ditto 8 Edw. VII. Nos. 25 and 29.....	3½	10,500	0	0	10,500	0	0
		307,545	0	0	287,545	0	0
On Local Inscribed Stock, 54 Vict. No. 8							
and 62 Vict. No. 38	3	150	0	0			
Ditto, ditto, 64 Vict. No. 14.....	3, 3¼ & 3½	2436	0	0	2070	0	0
Ditto, ditto, 64 Vict. No. 75	3½	6827	0	0	6545	0	0
Ditto, ditto, 1 Edw. VII. No. 52	3½	2193	0	0	2038	0	0
Ditto, ditto, 3 Edw. VII. No. 26	3½	62	0	0	57	0	0
Ditto, ditto, 4 Edw. VII. No. 30	3½ & 4	716	0	0	719	0	0
Ditto, ditto, 5 Edw. VII. No. 43	3½, 3¾ & 4	9961	0	0	10,044	0	0
Ditto, ditto, 5 Edw. VII. No. 44.....	3½ & 3¾	410	0	0	427	0	0
Ditto, ditto, 6 Edw. VII. No. 39.....	3½, 3¾ & 4	21,187	0	0	21,265	0	0
Ditto, ditto, 6 Edw. VII. No. 40.....	3½ & 3¾	2637	0	0	2637	0	0
Ditto, ditto, 54 Vict. No. 8, 62 Vict. No.							
38, and 5 Edw. VII. No. 31	3½ & 3¾	7363	0	0	6348	0	0
Ditto, ditto, 7 Edw. VII. No. 15	3½	1088	0	0	1200	0	0
Ditto, ditto, 7 Edw. VII. No. 16	3½, 3¾ & 4	12,139	0	0	12,248	0	0
Ditto, 8 Edw. VII. No. 25	3½, 3¾ & 4	2829	0	0	2835	0	0
Ditto, 8 Edw. VII. No. 29	3¾	1301	0	0	1305	0	0
Ditto, 9 Edw. VII. No. 59	4	700	0	0	1560	0	0
Ditto, 9 Edw. VII. No. 60	4	5500	0	0	9026	0	0
Ditto, 1 Geo. V. No. 43	3¾				11,300	0	0
Ditto 1 Geo. V. No. 44.....	3¾ & 4				9640	0	0
Treasury Bills, 4 Edw. VII. No. 31	3½	319	0	0			
Ditto, ditto, 5 Edw. VII. No. 24	3½	1365	0	0			
Ditto ditto, 7 Edw. VII. No. 23	3½	53	0	0	53	0	0
Ditto ditto, 9 Edw. VII. No. 58	4	765	0	0	1528	0	0
Ditto 1 Geo. V. No. 45	3¾				1290	0	0
		80,006	0	0	104,135	0	0
<i>Total Interest as reserved by Law</i>	£	387,551	0	0	391,680	0	0
Interest on Advances by London County and Westminster Bank Limited, pending floating of renewal Loan in London					15,000	0	0
		387,551	0	0	406,680	0	0
<i>Estimated Revenue to be received for Interest on Public Account, and from Local Bodies, &c</i>	£	27,000	0	0	29,000	0	0

Appropriation, 1911-12.

PENSIONS, INTEREST, AND SINKING FUNDS—*continued.*

	CLASSIFICATION.		1910-11.			1911-12.			Total Emoluments, including estimated value of allowances not received in cash.
	Class.	Sub-division.	Fixed Establishment.			Fixed Establishment.			
LIII.—Sinking Funds.									
1			£	s.	d.	£	s.	d.	
Mount Cameron Water-race, Moiety of Rentals			46	0	0*	46	0	0*	
2									
Expenses in connection with Public Debts Sinking Fund.....			50	0	0	50	0	0	
3									
Interest on Sinking Funds under Local Public Works Loans Act, &c.....			1400	0	0*	1800	0	0*	
4									
Contribution to Sinking Fund under Strahan Marine Board Act, 62 Vict. No. 54.....			4000	0	0*	4000	0	0*	
5									
Reserves under Crown and Waste Lands Acts to redeem Loans			30,000	0	0*	30,000	0	0*	
6									
Contribution to be paid to Public Debts Sinking Fund to redeem Loans under Local Inscribed Stock Act, 8 Ed. VII. No. 29—									
£15,000 redeemable 1st April, 1929 (Item 3)			513	0	0*	513	0	0*	
£7900 redeemable 1st January, 1940 (Item 4)			141	0	0*	141	0	0*	
7									
Contribution to be paid to Public Debts Sinking Fund for Redemption of Loans for Public Works—									
Under Act, 1 Ed. VII. No. 49			1180	0	0	1180	0	0	
Ditto, 2 Ed. VII. No. 43			630	0	0	630	0	0	
Ditto, 3 Ed. VII. No. 27			495	0	0	495	0	0	
Ditto, 4 Ed. VII. No. 29			342	0	0	342	0	0	
Ditto, 5 Ed. VII. No. 42 (exclusive Renewal of Bridges).....			458	0	0	458	0	0	
Ditto, 5 Ed. VII. No. 42 (Item 330, for Renewal of Bridges)			440	0	0*	440	0	0*	
Ditto, 6 Ed. VII. No. 23			997	0	0*	997	0	0*	
Ditto, 7 Ed. VII. No. 31			1655	0	0*	1655	0	0*	
Ditto, 8 Ed. VII. No. 14 (Item 778, for Renewal of Bridges) .			440	0	0*	440	0	0*	
Ditto, 8 Ed. VII. No. 14 (exclusive of Renewal of Bridges)			1658	0	0*	1658	0	0*	
Ditto, 9 Ed. VII. No. 51			1791	0	0*	1791	0	0*	
Ditto, 1 Geo. V. No. 51 (Items 1 to 940, 942 to 994 and 996			2708	0	0*	
Ditto, 1 Geo. V. No. 51 (Item 941 for Renewal of Jetties			180	0	0*	
			46,236	0	0	49,524	0	0	
Reserved by Law			46,369	0	0*				
To be voted.....			3155	0	0				
Total Sinking Funds			49,524	0	0				
Total Pensions, Interest, and Sinking Funds..			£446,890	8	6	469,280	6	10.	
Reserved by Law			£450,248	13	4				
To be voted			19,031	13	6				
			469,280	6	10				